



**T&S BRASS AND BRONZE WORKS, INC.**  
 2 Saddleback Cove / P.O. Box 1088  
 Travelers Rest, SC 29690

Model No.  
**MV-0771-12R-VB**

Item No.

Travelers Rest, SC: 800-476-4103 • Simi Valley, CA: 800-423-0150 • Fax: 864-834-3518 • www.tsbrass.com

This Space for Architect/Engineer Approval

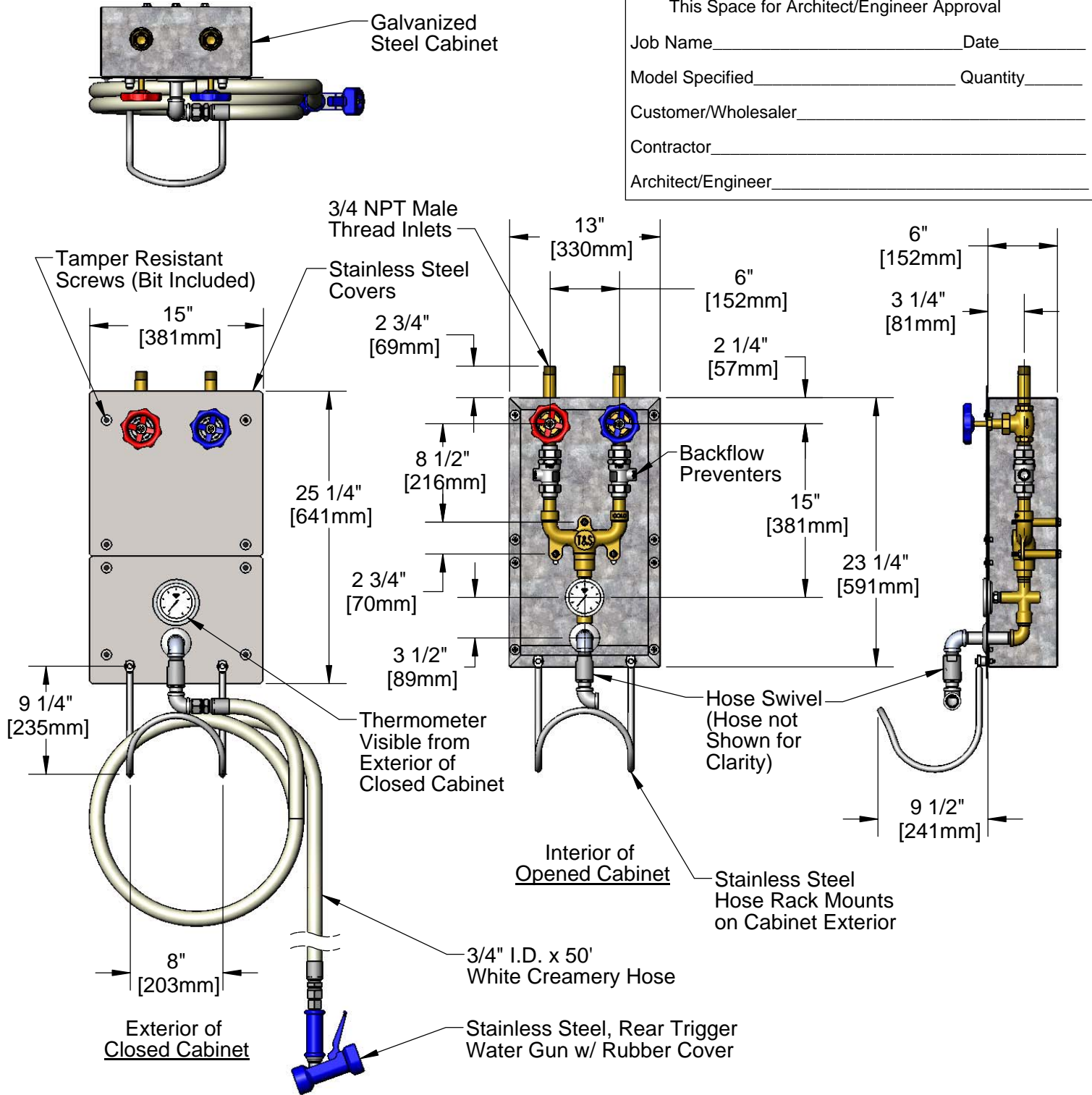
Job Name \_\_\_\_\_ Date \_\_\_\_\_

Model Specified \_\_\_\_\_ Quantity \_\_\_\_\_

Customer/Wholesaler \_\_\_\_\_

Contractor \_\_\_\_\_

Architect/Engineer \_\_\_\_\_



**Product Specifications:**  
 Recessed Cabinet & Washdown Station w/ Thermometer, Mixing Valve w/  
 3/4" NPT Male Inlets, Backflow Preventers, 50 Ft. Hose, Stainless Steel Water  
 Gun & Hose Rack

**Product Compliance:**  
 NSF 61 Exempt (Non-Potable)

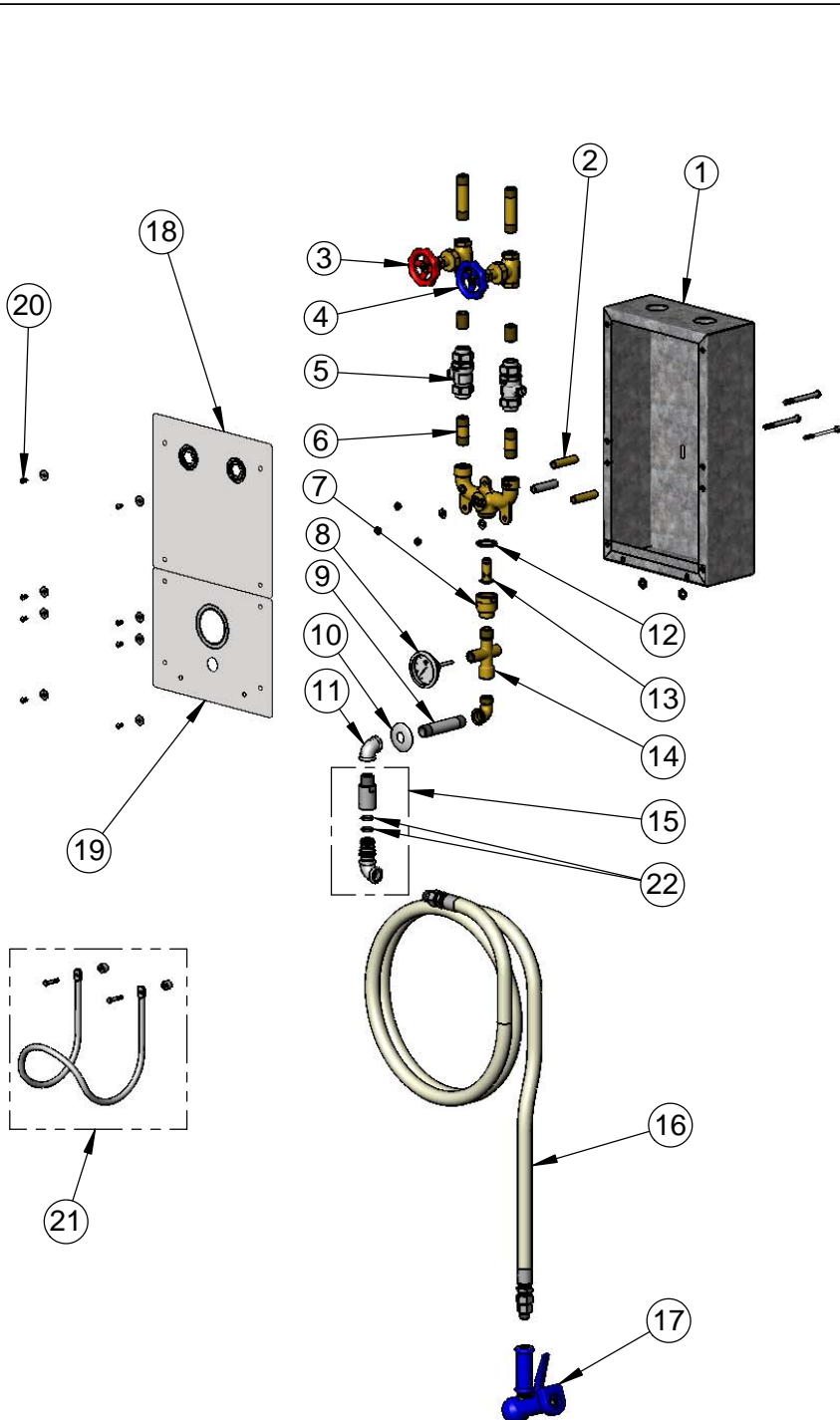


**T&S BRASS AND BRONZE WORKS, INC.**  
 2 Saddleback Cove / P.O. Box 1088  
 Travelers Rest, SC 29690

Model No.  
**MV-0771-12R-VB**

Item No.

Travelers Rest, SC: 800-476-4103 • Simi Valley, CA: 800-423-0150 • Fax: 864-834-3518 • www.tsbrass.com



Item No.	Sales No.	Description
1	006667-45	Recessed Cabinet
2	005401-20	Spacer, Long
3	006648-20R	3/4" Globe Valve, Red Handle
4	006648-20B	3/4" Globe Valve, Blue Handle
5	B-0962	3/4" Backflow Preventer
6	004525-20	3/4" Nipple x 2 1/2" Long
7	015456-20	Outlet Nipple
8	003799-45	Thermometer, Bi-Metal
9	004528-40	3/4" Nipple x 4" Long
10	004831-40	Escutcheon, 3/4"
11	001720-40	3/4" Cast Elbow, Female
12	006653-45	Gasket
13	006510-20	Diffuser
14	009163-20	Thermometer Tee, 3/4"
15	007252-25	Swivel
16	004980-40	Hose, 3/4" x 50 Ft.
17	MV-2516-44	SS Water Gun, 9/16" Orifice
18	006660-45	Top Cover
19	005395-45	Bottom Cover
20	014741-45	Tamper Resistant Screw
21	002970-45	Hose Rack
22	002721-45	O-Ring



017511-45  
 Bit for Tamper  
 Resistant  
 Screws

Product Specifications:  
 Recessed Cabinet & Washdown Station w/ Thermometer, Mixing Valve w/  
 3/4" NPT Male Inlets, Backflow Preventers, 50 Ft. Hose, Stainless Steel Water  
 Gun & Hose Rack

Product Compliance:  
 NSF 61 Exempt (Non-Potable)



# Washdown Stations

## MV-0771-12R-VB

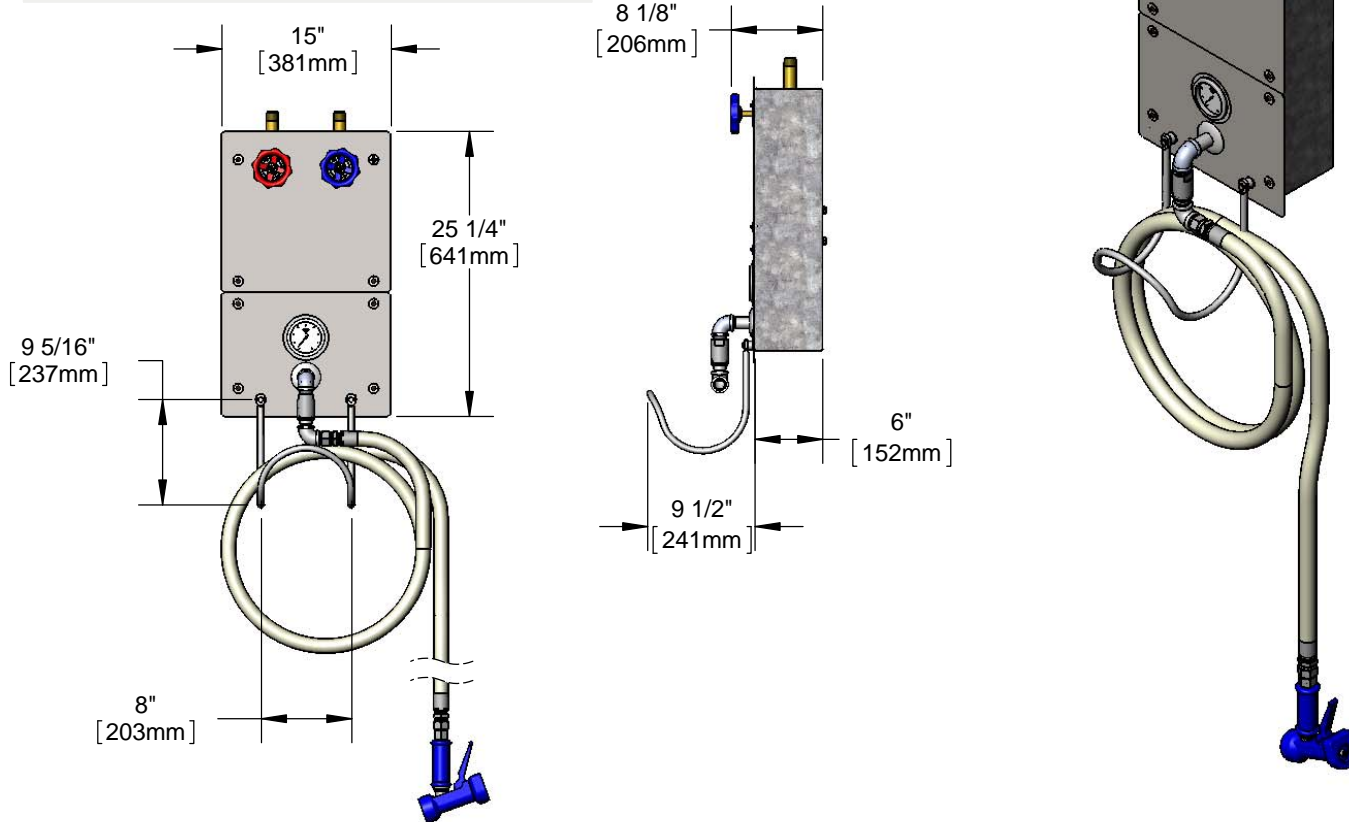
TAG:

### Water Mixing Station

#### Architect/Engineering Specifications:

Cabinet and washdown station with 3/4" brass mixing valve, backflow preventers, thermometer, 50' hose, rear trigger stainless steel water gun, hose swivel & hose rack.

Job Name \_\_\_\_\_  
 Model Specified \_\_\_\_\_ Quantity \_\_\_\_\_  
 Variations Specified \_\_\_\_\_  
 Date \_\_\_\_\_



#### Features & Benefits:

- 3/4" globe valves w/ color coded handles
- 3/4" backflow preventers to prevent cross flow of water
- Brass thermometer tee
- Stainless steel thermometer, temperature range 0°F - 200°F
- 3/4" hose swivel
- Stainless steel hose rack w/ mounting hardware
- Material: Brass tee, stainless steel thermometer, water gun and rubber hose

#### Product Compliance:

- NSF 61 Exempt (Non-Potable)

**Warranty:** One Year (Limited)

#### Performance Data:

- Pressure: 20 - 125 psi
- Temperature: 40°F - 200°F
- Flow Rate: 30.70 GPM @ 60 psi



T&S BRASS AND BRONZE WORKS, INC.



• 2 Saddleback Cove • Travelers Rest, SC 29690  
 Ph 800-476-4103 • Fax 864-834-3518  
 • Simi Valley, CA • Ph 800-423-0150 • www.tsbrass.com

Date: 11/21/16