



**John
BOOS**
Since 1887

ITEM #: _____ QTY: _____
 MODEL #: _____
 PROJECT NAME: _____

041221

3601 S. Banker St. Effingham, IL 62401 • Ph: (888) 431-2667 • Fax: (800) 433-2667

"UBGR-21" UNDERBAR GLASS RACK **21" WIDTH**



STANDARD FEATURES:

- ALL 18 GAUGE STAINLESS STEEL CONSTRUCTION
- TYPE 300 STAINLESS STEEL WITH #4 POLISH, SATIN FINISH
- STANDARD PRE-DRILLED HOLES ON SIDES FOR ATTACHING ADJACENT UNITS TOGETHER
- ADJUSTABLE GLASS RACK RAILS FOR TALL STEMWARE
- REMOVABLE PERFORATED DRAINBOARD INSERT FOR INCREASED AIR CIRCULATION
- TOP AND BOTTOM DRAINS WITH HOSE AND FITTINGS
- STAINLESS STEEL FRONT TO BACK BRACING

SPECIFICATIONS:

- MATERIALS
 - TOP: 18 GAUGE TYPE 300 STAINLESS STEEL
 - FRONT APRON: 18 GAUGE TYPE 300 STAINLESS STEEL
 - BACKSPLASH: 18 GAUGE TYPE 300 STAINLESS STEEL
 - SIDES: 18 GAUGE TYPE 300 STAINLESS STEEL
- LEGS
 - BOLT ON 1-5/8" STAINLESS STEEL LEGS FOR FAST INSTALLATION
 - 1" ADJUSTABLE STAINLESS STEEL BULLET FEET
- MOUNTING OPTIONS
 - Z-CLIP TO MOUNT TO WALL
 - BOLT TO ADJACENT UNDERBAR PIECE
 - MOUNTING OPTIONS ALLOW FOR FLEXIBLE INSTALLATION OPTIONS TO REMOVE BACK OR FRONT AND BACK LEGS FOR A CLEAN INSTALLATION
- PLUMBING
 - TWO BARBED 1/2" DRAINS WITH 1/2" CLEAR HOSE AND FITTINGS
- NSF CERTIFIED

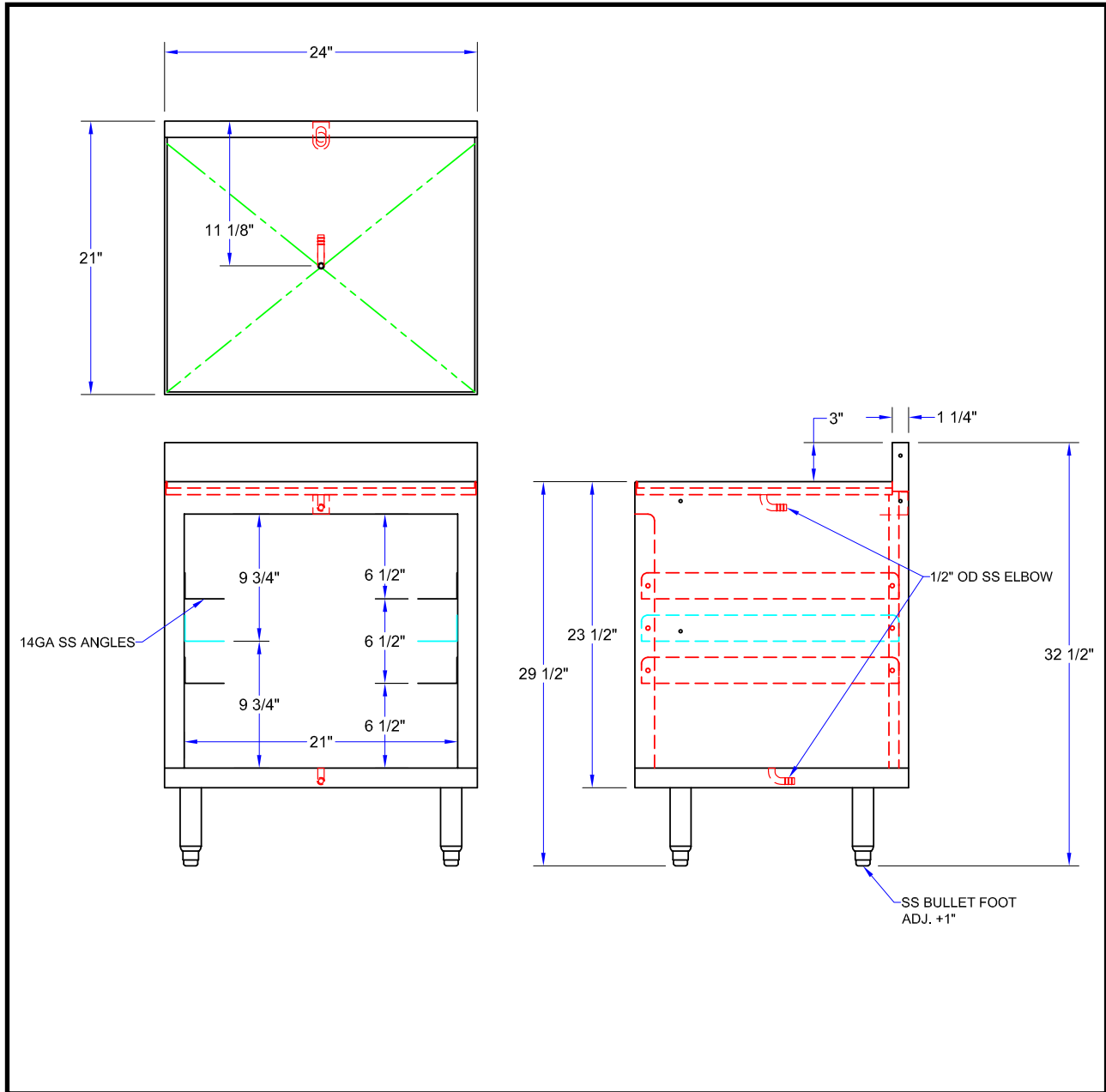


ACCESSORIES	DESCRIPTION
UBSS-21-L	SLIM-LINE LEFT HAND SIDE SPLASH
UBSS-21-R	SLIM-LINE RIGHT HAND SIDE SPLASH

GLASS RACK - 21" WIDTH

MODEL #	SIZE (LXWXH)	WT. (LBS)
UBGR-2124	24"X21"X32-1/2"	64

DETAILED SPECIFICATIONS



GLASS RACK - 21" WIDTH

MODEL #	SIZE (LXWXH)	WT. (LBS)
UBGR-2124	24"X21"X32-1/2"	64

SOME UNITS SHIP UNASSEMBLED FOR REDUCED SHIPPING COST. ALL DIMENSIONS ARE TYPICAL. TOLERANCE +/- .500"
 John Boos & Co. is constantly engaged in a program of improving products and therefore reserves the right to change specifications without prior notice.



3601 S. Banker St. • Effingham, IL 62401 • quotes@johnboos.com

www.johnboos.com