



**John  
BOOS**  
Since 1887

ITEM #: \_\_\_\_\_ QTY: \_\_\_\_\_  
 MODEL #: \_\_\_\_\_  
 PROJECT NAME: \_\_\_\_\_

041221

3601 S. Banker St. Effingham, IL 62401 • Ph: (888) 431-2667 • Fax: (800) 433-2667

## **"UBS3-18" UNDERBAR 3 COMPARTMENT SINK**



### **SLIM-LINE, 18" WIDTH**

#### **STANDARD FEATURES:**

- ALL 18 GAUGE STAINLESS STEEL CONSTRUCTION
- TYPE 300 STAINLESS STEEL WITH #4 POLISH, SATIN FINISH
- SLIM LINE 18" DEEP FRONT TO BACK
- STANDARD PRE-DRILLED HOLES ON SIDES FOR ATTACHING ADJACENT UNITS TOGETHER
- REMOVABLE FAUCET PLATES WITH 4" ON-CENTER SPLASH MOUNT FAUCET HOLES
- REMOVABLE PERFORATED DRAINBOARD INSERTS FOR INCREASED AIR CIRCULATION
- CREASED DRAINBOARDS FOR IMPROVED DRAINAGE
- STAINLESS STEEL FRONT TO BACK BRACING



UBS3-1860-2D12

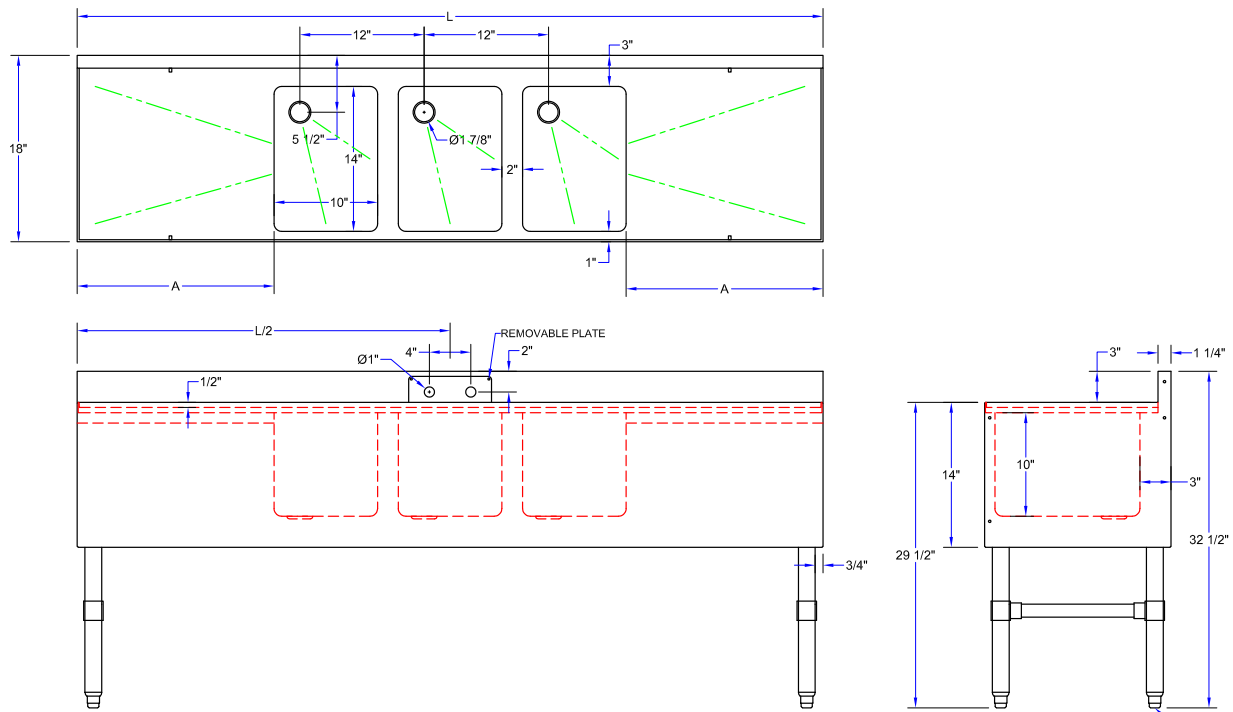
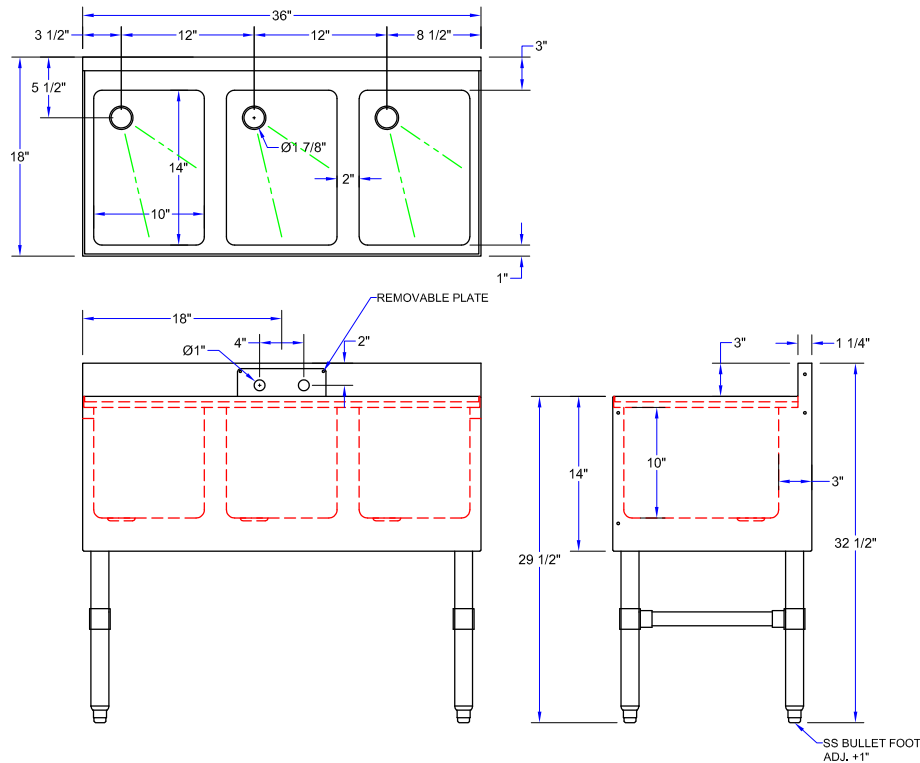
#### **SPECIFICATIONS:**

- MATERIALS
  - TOP: 18 GAUGE TYPE 300 STAINLESS STEEL
  - FRONT APRON: 18 GAUGE TYPE 300 STAINLESS STEEL
  - BACKSPLASH: 18 GAUGE TYPE 300 STAINLESS STEEL
  - SIDES: 18 GAUGE TYPE 300 STAINLESS STEEL
- SINK BOWL
  - FABRICATED SINK BOWL: 14" X 10" X 10" DEEP
- LEGS AND BRACING
  - BOLT ON 1-5/8" STAINLESS STEEL LEGS FOR FAST INSTALLATION
  - 1-1/4" FRONT TO BACK BRACING
  - 1" ADJUSTABLE STAINLESS STEEL BULLET FEET
- MOUNTING OPTIONS
  - Z-CLIP TO MOUNT TO WALL
  - BOLT TO ADJACENT UNDERBAR PIECE
  - MOUNTING OPTIONS ALLOW FOR FLEXIBLE INSTALLATION OPTIONS TO REMOVE BACK OR FRONT AND BACK LEGS FOR A CLEAN INSTALLATION
- PLUMBING
  - 1-7/8" DRAIN WITH BASKET
  - 1-1/2" NPS DRAIN CONNECTION
- NSF CERTIFIED

ACCESSORIES	DESCRIPTION
UBSS-18-L	SLIM-LINE LEFT HAND SIDE SPLASH
UBSS-18-R	SLIM-LINE RIGHT HAND SIDE SPLASH
PBF-4SM2-10LF	HEAVY DUTY FAUCET
PBF-W2-10LF	ECONOMY FAUCET
PB-WL-36	FLEXIBLE SHALLOW MOUNT FAUCET HOSES

### **3 COMPARTMENT SINK - SLIM-LINE, 18" WIDTH**

MODEL #	SIZE (LXWXH)	LENGTH (L)	DRAINBOARD (A)	WT. (LBS)
UBS3-1836	36"X18"X32-1/2"	36"	-	61
UBS3-1860-2D12	60"X18"X32-1/2"	60"	2X12"	89
UBS3-1872-2D18	72"X18"X32-1/2"	72"	2X18"	100
UBS3-1884-2D24	84"X18"X32-1/2"	84"	2X24"	111



**3 COMPARTMENT SINK - SLIM-LINE, 18" WIDTH**

MODEL #	SIZE (LXWXH)	LENGTH (L)	DRAINBOARD (A)	WT. (LBS)
UBS3-1836	36"X18"X32-1/2"	36"	-	61
UBS3-1860-2D12	60"X18"X32-1/2"	60"	12"	89
UBS3-1872-2D18	72"X18"X32-1/2"	72"	18"	100
UBS3-1884-2D24	84"X18"X32-1/2"	84"	24"	111

SOME UNITS SHIP UNASSEMBLED FOR REDUCED SHIPPING COST. ALL DIMENSIONS ARE TYPICAL. TOLERANCE +/- .500"

John Boos & Co. is constantly engaged in a program of improving products and therefore reserves the right to change specifications without prior notice.

