



**John  
BOOS**  
Since 1887

ITEM #: \_\_\_\_\_ QTY: \_\_\_\_\_  
 MODEL #: \_\_\_\_\_  
 PROJECT NAME: \_\_\_\_\_

041521

3601 S. Banker St. Effingham, IL 62401 • Ph: (888) 431-2667 • Fax: (800) 433-2667

## **"UBSC-21" UNDERBAR STORAGE CABINET**



### **21" WIDTH**

#### **STANDARD FEATURES:**

- ALL 18 GAUGE STAINLESS STEEL CONSTRUCTION
- TYPE 300 STAINLESS STEEL WITH #4 POLISH, SATIN FINISH
- STANDARD PRE-DRILLED HOLES ON SIDES FOR ATTACHING ADJACENT UNITS TOGETHER
- REMOVABLE PERFORATED DRAINBOARD INSERT FOR INCREASED AIR CIRCULATION
- TOP DRAIN WITH HOSE AND FITTINGS
- LOCKING HINGED DOOR

#### **SPECIFICATIONS:**

- MATERIALS
  - TOP: 18 GAUGE TYPE 300 STAINLESS STEEL
  - DOOR: 18 GAUGE TYPE 400 STAINLESS STEEL
  - BACKSPLASH: 18 GAUGE TYPE 300 STAINLESS STEEL
  - SIDES: 18 GAUGE TYPE 300 STAINLESS STEEL
- LEGS
  - BOLT ON 1-5/8" STAINLESS STEEL LEGS FOR FAST INSTALLATION
  - 1" ADJUSTABLE STAINLESS STEEL BULLET FEET
- MOUNTING OPTIONS
  - Z-CLIP TO MOUNT TO WALL
  - BOLT TO ADJACENT UNDERBAR PIECE
  - MOUNTING OPTIONS ALLOW FOR FLEXIBLE INSTALLATION
  - OPTIONS TO REMOVE BACK OR FRONT AND BACK LEGS FOR A CLEAN INSTALLATION
- PLUMBING
  - BARBED 1/2" DRAIN WITH 1/2" CLEAR HOSE AND FITTINGS
- NSF CERTIFIED

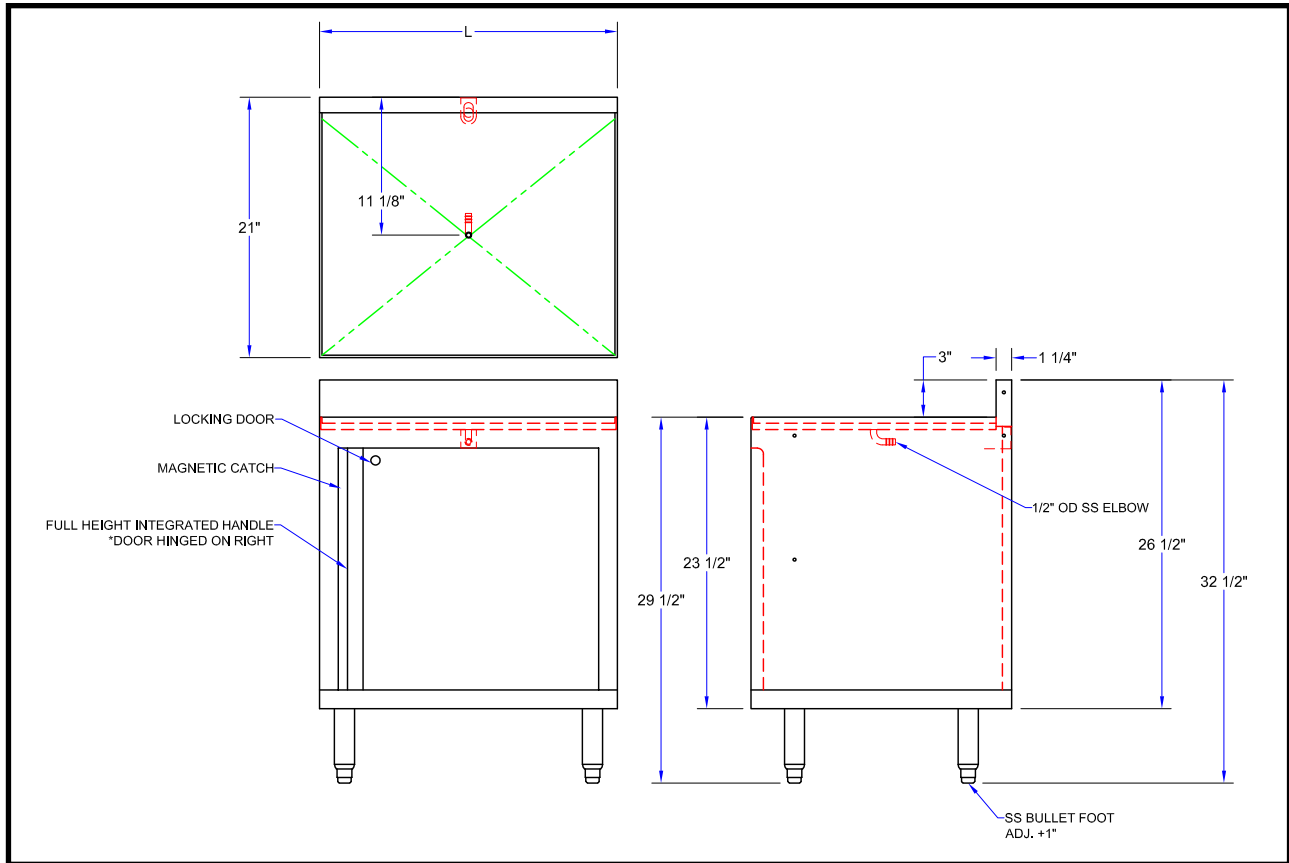


ACCESSORIES	DESCRIPTION
UBSS-21-L	LEFT HAND SIDE SPLASH
UBSS-21-R	RIGHT HAND SIDE SPLASH

### **STORAGE CABINET - 21" WIDTH**

MODEL #	SIZE (LXWXH)	LENGTH (L)	WT. (LBS)
UBSC-2118-R	18"X21"X32-1/2"	18"	51
UBSC-2124-R	24"X21"X32-1/2"	24"	62

# DETAILED SPECIFICATIONS



## STORAGE CABINET - 21" WIDTH

MODEL #	SIZE (LXWXH)	LENGTH (L)	WT. (LBS)
UBSC-2118-R	18"X21"X32-1/2"	18"	51
UBSC-2124-R	24"X21"X32-1/2"	24"	62

SOME UNITS SHIP UNASSEMBLED FOR REDUCED SHIPPING COST. ALL DIMENSIONS ARE TYPICAL. TOLERANCE +/- .500"  
 John Boos & Co. is constantly engaged in a program of improving products and therefore reserves the right to change specifications without prior notice.



Boos  
lock

AQ AutoQuotes

3601 S. Banker St. • Effingham, IL 62401 • quotes@johnboos.com

www.johnboos.com