

# Nature

The Nature range has been inspired by the forces of nature, due to our desire to mirror the strength, elegance and timelessness of the elements they provide us: minerals, metals, wood, earth.

Based on this idea, the squeezers of the Nature range let materials and colours take centre stage. Neutral, restrained and smart materials and colours which transmit those sensations in the establishments where the juicers are installed, giving them a higher, both real and perceived, high end quality.

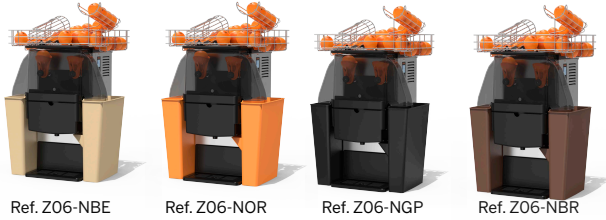


## Z06 Nature Inox

### **Juice extraction versatility: citrus fruit + pomegranates**

It is Zummo's most versatile juicer. It extracts juice from all types of citrus fruit and from pomegranates. The perfect option for those who seek flexibility in their offer.

## Available in 4 colours



Ref. Z06-NBE

Ref. Z06-NOR

Ref. Z06-NGP

Ref. Z06-NBR



Smoky grey front cover

## The evolution to Nature

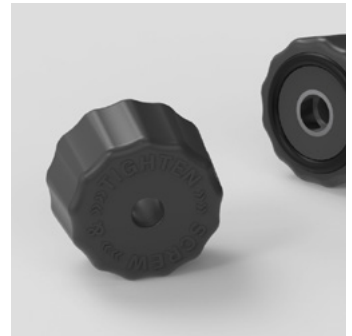
- Stainless steel bins
- High quality injected plastic nuts
- Smoky grey front cover
- EVS Advanced juice extraction system
- Higher capacity bins
- Automatic filter
- Standard contact sensor
- New digital control plate (bin counter, acoustic warnings, standby,...)



Automatic filter



- **Increased durability:** as there are no elastic belts, there are no breakages, something that could also affect the optimal functioning of the blade.
- **Greater functionality:** avoiding maintenance tasks and replacement of broken or worn belts. Cleaning the kit is also much easier.
- **Greater yield:** the new kit leads to greater juice extraction yield. Thanks to its new design, up to 10% more juice can be obtained.



Injected plastic nuts



## Technical features

|                         |  |
|-------------------------|--|
| <b>Fruit per minute</b> | 10                                       |
| <b>Weight</b>           | 116 lbs                                  |
| <b>Peel collection</b>  | 5.8 gal                                  |
| <b>Fruit diameter</b>   | 2.16"-2.95" / 2.75"-3.54" Opt 1.77-2.36" |
| <b>Measurements</b>     | 31.93"(h) x 21.57"(w) x 16.97"(l)        |
| <b>Protection</b>       | Blockage sensors                         |
| <b>Basket capacity</b>  | 13.23 lbs                                |
| <b>Feeder</b>           | 3.3 lbs                                  |
| <b>Programmer</b>       | Yes                                      |
| <b>Filter</b>           | Automatic                                |