



# BEVERAGE-AIR

Project: _____	AIA#
Item: _____	
Location: _____	SIS#
Approved: _____	

# CT96HC COUNTERTOP REFRIGERATOR

## COUNTERTOP MERCHANDISER SERIES

### CT96HC Countertop Refrigerator

**MODEL:**  
CT96HC-1-B



**1 Year Parts/Labor Warranty**

#### CABINET CONSTRUCTION

- Exterior is heavy duty black textured steel
- Interior is heavy duty white epoxy coated steel
- Black plastic door frames
- Full electronic control with display
- LED lighting
- Double pane tempered glass door
- Door lock
- Three (3) epoxy coated shelves
- 2 Top shelves are adjustable
- 6' Cord and plug set included

#### OPTIONS & ACCESSORIES

- Custom Graphics
- Wire Shelves

#### REFRIGERATION SYSTEM

- Refrigeration system uses R600a refrigerant to comply with all environmental concerns
- Automatic, non-electric defrost
- Epoxy coated evaporator coil
- Maintains product temperature between 36°F and 38°F



Please verify qualifying units by visiting:  
[www.energystar.gov/cfs](http://www.energystar.gov/cfs)

3779 Champion Blvd., Winston-Salem, NC 27105  
1-888-845-9800 Fax: 1-336-245-6453  
Beverage-Air.com Sales@bevair.com

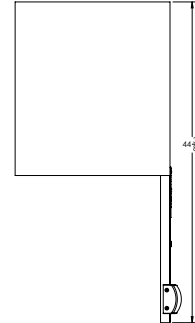


# BEVERAGE-AIR®

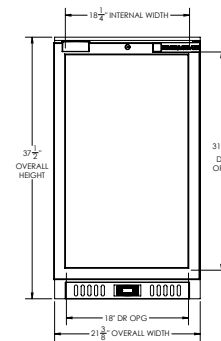
MODEL	CT96HC-1-B
<b>EXTERNAL DIMENSIONAL DATA</b>	
Width Overall	21 <sup>3</sup> / <sub>8</sub> "
Depth Overall	25 <sup>1</sup> / <sub>2</sub> "
Height Overall	37 <sup>1</sup> / <sub>2</sub> "
Number of Doors	1
Depth with Door Open 90°	44 <sup>3</sup> / <sub>8</sub> "
Door Opening (in)	18" x 31 <sup>1</sup> / <sub>4</sub> "
<b>INTERNAL DIMENSIONAL DATA</b>	
NET Capacity (cubic ft.)	5.9
Internal Width Overall (in)	18 <sup>1</sup> / <sub>4</sub> "
Internal Depth Useable (in)	Upper 19 <sup>1</sup> / <sub>8</sub> " Lower 12 <sup>1</sup> / <sub>4</sub> "
Internal Height Overall (in)	31 <sup>5</sup> / <sub>8</sub> "
Internal Height Useable (in)	24 <sup>1</sup> / <sub>8</sub> "
Number of Shelves	3
<b>ELECTRICAL DATA</b>	
Full Load Amperes 115/60/1	1.3
<b>REFRIGERATION DATA</b>	
Horsepower	1/5
<b>WEIGHT DATA</b>	
Gross Weight	125 lbs
Height - Crated	45"
Width - Crated	24"
Depth - Crated	27"

## Countertop Refrigerator Model: CT96HC-1-B

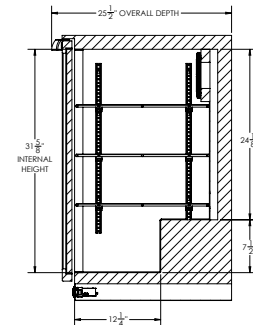
### Model Views



### PLAN VIEW



### ELEVATION VIEW



### SIDE VIEW

### ELECTRICAL CONNECTION



115/60/1  
NEMA 5-15P

Units pre-wired at factory and include 6' long cord and plug set.



3779 Champion Blvd., Winston-Salem, NC 27105 1-888-845-9800 Fax: 1-336-245-6453 Beverage-Air.com Sales@bevoir.com

an Ali Group Company



The Spirit of Excellence