

Project: _____	AIA# _____
Item #: _____ Qty: _____	SIS# _____
Model #: _____	

Back Bar Coolers One, Two, Three and Four Door Self-Contained



BB60-L1-XS(LR)



BB60-L1-BS(LD)
with one door
converted to drawers



Intertek

4004503



Intertek

Conforms to NSF/ANSI STD 7* and UL STD 471
Certified to CSA STD C22.2 No. 120

*Door models are NSF 7 for open food storage. Units
with drawers are NSF 7 for closed container products.

BB - - ()

Size:
36 = 36" One Door
60 = 60" Two Door
84 = 84" Three Door
108 = 108" Four Door

Refrig. Compartment:
L = Left or R = Right

Base Height:
1 = 1"
6 = 6" Legs

Door Hinge Location†:
(from left to right)
L = Left or R = Right
OR
D = Wine Drawers††

Top Style:
N = No finished top
L = Laminated
S = Stainless

Door Style Options:
U = Unlaminated
L = Laminated
G = Glass
X = Stainless Glass
Y = Laminated Glass

**Door OR Wine
Drawer†† Style Options:**
B = Black vinyl clad
S = Stainless

† Specify hinge location for each door

†† Wine drawers are not available with locks

See our Product Directory for a complete
list of back bar cooler accessories.

Standard Features

- All stainless steel interior construction with radius interior corners for easy cleaning
- CFC free foamed-in-place insulation
- Galvanized steel sub-top
- Black vinyl-clad steel exterior front and sides
- Automatic defrost timer
- Stainless steel die cast handle with lock (does not include wine drawer sections)
- Includes LED interior lighting
- Compressor compartment available on left or right side of unit
- Any door opening may be converted to a wine drawer section

Specifications

Electrical

- 120V, 1 phase, 60 Hz, 6.5 full load amps
- Dedicated 15 amp circuit is required
- Includes a 6 foot NEMA 5-15P grounded cord and plug which exits the back of refrigeration compartment

Refrigeration

- R134a

Operating Range

- 34°F (1°C) to 40°F (4°C)

Plumbing

- Automatic condensate evaporator. No drain connection required.

Shelving

- Two adjustable coated shelves and one bottom coated rack per door included (does not include wine drawer sections)

Legs (Optional)

- 1-5/8" diameter
- Stainless steel bullet feet



5-15P

Materials

- 22 gauge stainless steel parts include: interior floor, walls, ceiling, front of cabinet, and evaporator housing
- 22 gauge black vinyl-clad parts include: sides, standard doors, and compressor compartment housing
- 22 gauge galvanized steel parts include: exterior sub-top and back
- 16 gauge stainless steel parts include: legs
- 16 gauge galvanized steel parts include: base and compressor compartment base plate
- 16 gauge zinc plated CR steel parts include: leg sockets
- 12 gauge stainless steel parts include: hinges, hinge brackets, and lock brackets

Weight Bearing Capacity

- Counter tops and other accessories should not exceed 500 pounds per door

Glastender, Inc. • 5400 N Michigan Rd • Saginaw, MI • 48604-9780
989.752.4275 • 800.748.0423 • Fax 989.752.4444
www.glastender.com

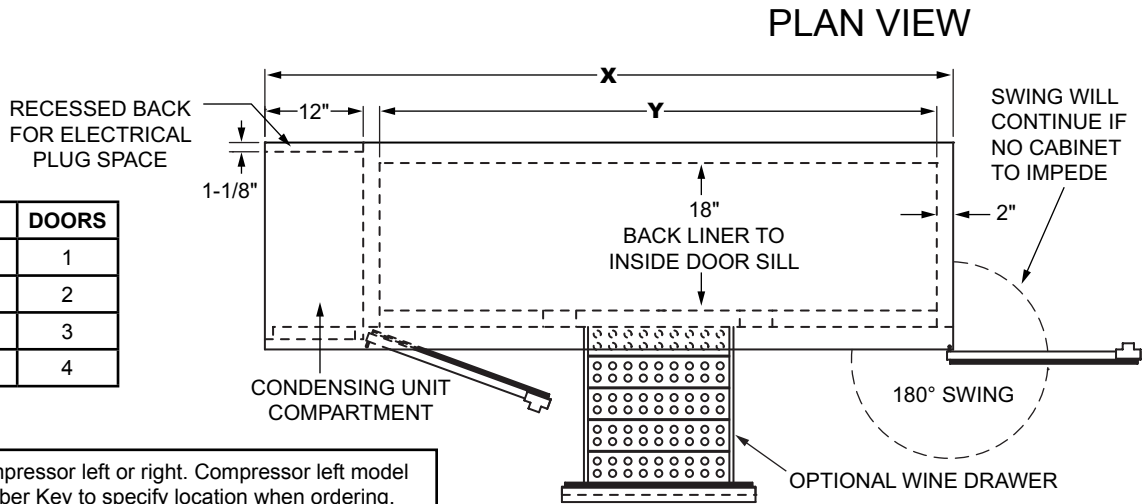
Approval/Notes:

Specifications subject to change without notice. For current specifications please visit our website.

Self-Contained Back Bar Coolers

Dimensional Information

Model	X	Y	DOORS
BB36	36"	20"	1
BB60	60"	44"	2
BB84	84"	68"	3
BB108	108"	92"	4

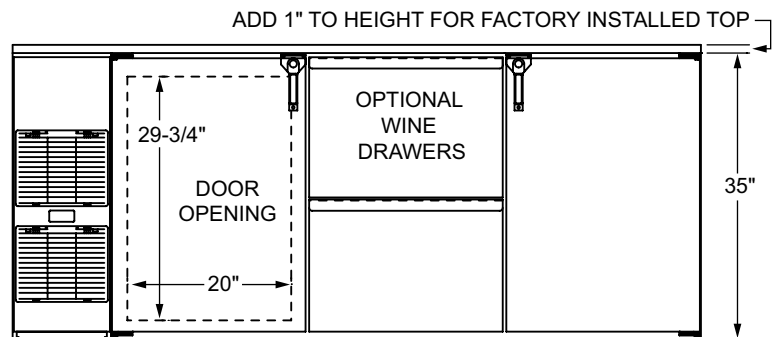


Note: Available with compressor left or right. Compressor left model shown. Use Model Number Key to specify location when ordering.

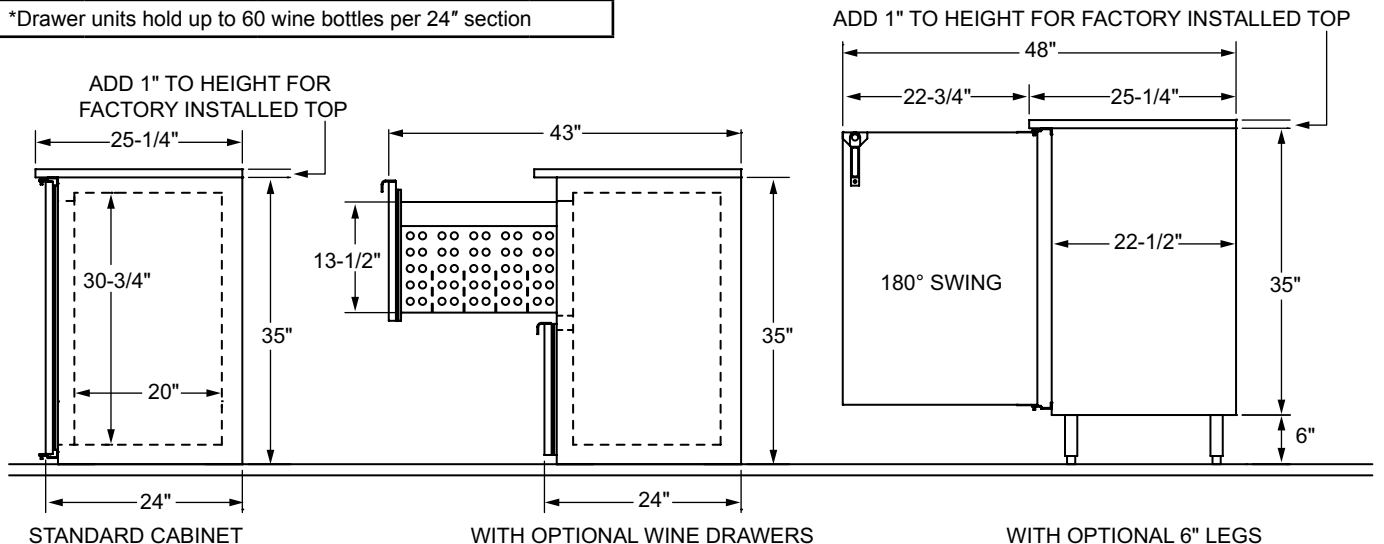
Model	Door Capacity: 12 oz. bottle / 1/2 barrels/ 750ml wine bottles*	Refrigeration: H.P. / Refrigerant / Heat Rejection (BTU/Hr)	Voltage	Amps
BB36	7 cases / 1 half barrel/ 66 750ml wine bottles*	1/4 H.P. / R134a / 2,661 BTU/hr	120v / 60 Hz / 1 phase	6.5 full load
BB60	15.2 cases / 2 half barrel/ 138 750ml wine bottles*	1/4 H.P. / R134a / 2,661 BTU/hr	120v / 60 Hz / 1 phase	6.5 full load
BB84	23.7 cases / 4 half barrels/ 216 750ml wine bottles*	1/4 H.P. / R134a / 2,661 BTU/hr	120v / 60 Hz / 1 phase	6.5 full load
BB108	32.2 cases / 5 half barrels/ 294 750ml wine bottles*	1/4 H.P. / R134a / 2,661 BTU/hr	120v / 60 Hz / 1 phase	6.5 full load

*Drawer units hold up to 60 wine bottles per 24" section

FRONT VIEW



SIDE VIEWS



5400 N Michigan Rd • Saginaw, MI • 48604-9780
 989.752.4275 • 800.748.0423 • Fax 989.752.4444
www.glastender.com