



BEVERAGE-AIR

3779 Champion Blvd., Winston-Salem, NC 27105
1-888-845-9800 Fax# 1-336-245-6453
<http://www.Beverage-Air.com>

Commercial Refrigeration Equipment General Specification

CR5 SERIES—COUNTERTOP REFRIGERATOR

Select from 6 standard models. Used for merchandising and storage of product. Requires minimum countertop space.

CABINET CONSTRUCTION

Heavy duty construction includes baked on white epoxy exterior finish. Stainless steel finish available. Top frame includes lighted sign panel. Door frames are constructed of anodized aluminum.

2" foamed-in-place CFC free polyurethane insulation enhances the structural strength of the cabinet and helps increase energy efficiency.

Field reversible, triple pane tempered glass doors feature heated hinged glass doors. Pass-thru models feature a door on each side for ease of product loading.

Glass end models feature one glass panel per side for enhanced product display.

REFRIGERATION

Forced-air refrigeration system uses R134a refrigerant, which is CFC free for compliance with environmental safety concerns. Operating temperatures as low as 35°F (2°C).

ELECTRICAL

Interior fluorescent lighting enhances product illumination. Units wired at factory and ready for connection to a 115/60/1 phase, 15 amp dedicated outlet. 8' long cord and plug set included.

SPECIAL FEATURES

- Door locks available
- Lighted sign panel standard
- Pass-thru models available
- Glass end models enhance product visibility.

ELECTRICAL CONNECTION

Units pre-wired at factory and include 8' long cord and plug set.



Item No. _____
Quantity _____

COUNTERTOP MERCHANDISER SERIES C SERIES REFRIGERATOR

MODELS:
CR5
CR5GE
CRD5
CRD5GE

CRD5



CR5



CRD5GE



Available From:



*Note: Not all markings may apply to all model variations.

| | |
|------------------------------|-----------------------|
| Model Specified _____ | Store# _____ |
| Location _____ | Quantity _____ |



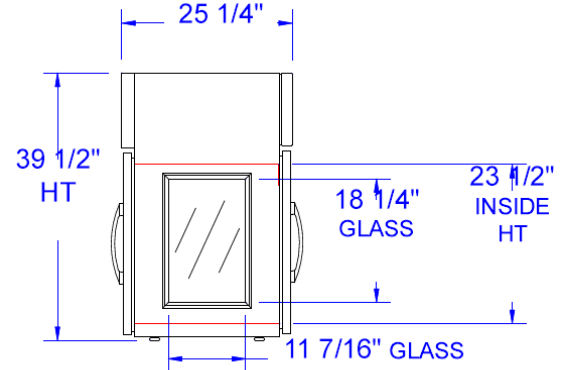
BEVERAGE-AIR

Countertop Merchandiser Series

Models: CR5, CR5GE, CRD5, CRD5GE

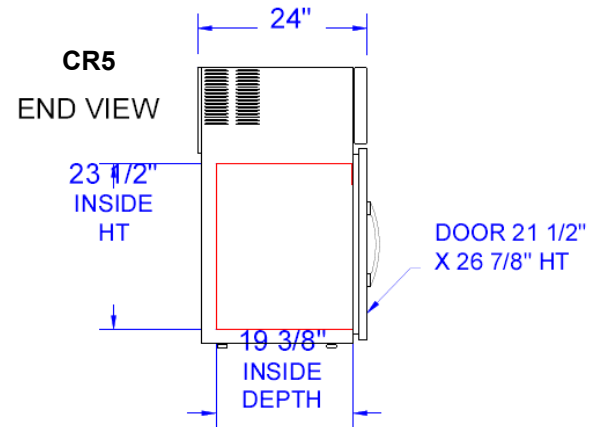
PLAN VIEWS

| MODEL | CR5 | CR5GE | CRD5 | CRD5GE |
|----------------------------------|-------------------|-------------------|-------------------|-------------------|
| EXTERNAL DIMENSIONAL DATA | | | | |
| Length Overall (inches) | 22" | 22" | 22 1/8" | 22 1/8" |
| Length Overall (mm) | 559 | 559 | 562 | 562 |
| Depth Overall (inches) | 24" | 24" | 25 1/4" | 25 1/4" |
| Depth Overall (mm) | 610 | 610 | 641 | 641 |
| Height Overall— (inches) | 39 5/8" | 39 5/8" | 39 1/2" | 39 1/2" |
| Height Overall— (mm) | 1007 | 1007 | 1003 | 1003 |
| Number of doors | 1 | 1 | 2 | 2 |
| Depth with Door Open 90 ° | 41 1/8" | 41 1/8" | 65 1/2" | 65 1/2" |
| Clear Door Opening (inches) | 17 3/8" x 20 1/2" | 17 3/8" x 20 1/2" | 17 1/2" x 20 3/8" | 17 1/2" x 20 3/8" |
| INTERNAL DIMENSIONAL DATA | | | | |
| NET Capacity (cubic ft.) | 5 | 5 | 5.5 | 5.5 |
| NET Capacity (Liters) | 142 | 142 | 156 | 156 |
| Internal Length Overall (inches) | 17 3/4" | 17 3/4" | 17 3/4" | 17 3/4" |
| Internal Length Overall (mm) | 451 | 451 | 451 | 451 |
| Internal Depth Overall (inches) | 19 3/8" | 19 3/8" | 21 1/2" | 21 1/2" |
| Internal Depth Overall (mm) | 492 | 492 | 546 | 546 |
| Internal Height Overall—(inches) | 23 1/2" | 23 1/2" | 23 1/2" | 23 1/2" |
| Internal Height Overall—(mm) | 597 | 597 | 597 | 597 |
| Number of shelves | 3 | 3 | 3 | 3 |
| ELECTRICAL DATA | | | | |
| Full Load Amperes 115/60/1 | 5.9 | 5.9 | 5.9 | 5.9 |
| ENERGY CONSUMPTION (KWH) | | | | |
| | 3.25 | 3.25 | 4.74 | 4.74 |
| REFRIGERATION DATA | | | | |
| Horsepower | 1/4 | 1/4 | 1/4 | 1/4 |
| WEIGHT DATA | | | | |
| Gross Weight (Crated lbs) | 220 | 208 | 222 | 222 |
| Gross Weight (Crated kg) | 100 | 94 | 101 | 101 |



END VIEW

CRD5GE

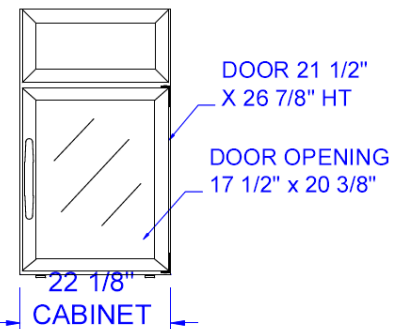


CR5

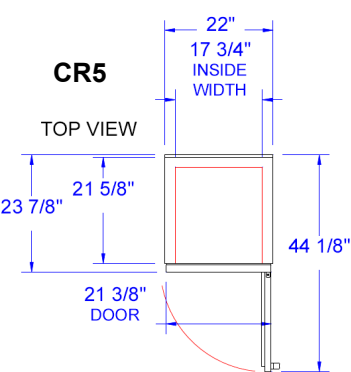
END VIEW



Note: Not all markings may apply to all model variations.

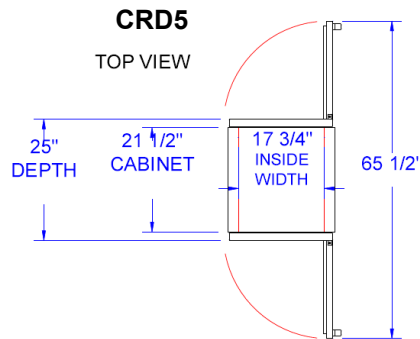


CRD5
FRONT VIEW



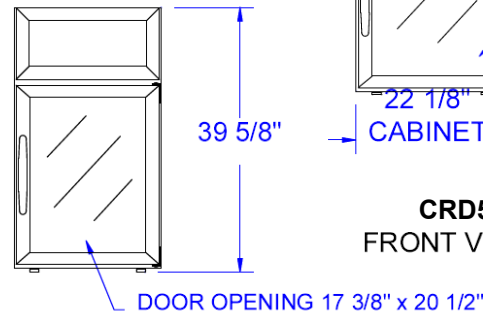
CR5

TOP VIEW



CRD5

TOP VIEW



FRONT VIEW

CR5

BEVERAGE-AIR® CORPORATION

3779 Champion Blvd. • Winston-Salem, NC 27105 USA • (336) 245-6400 • Fax (336) 245-6453 • (888) 845-9800 • www.beverage-air.com

Specifications are subject to change without prior notice. 06/10