

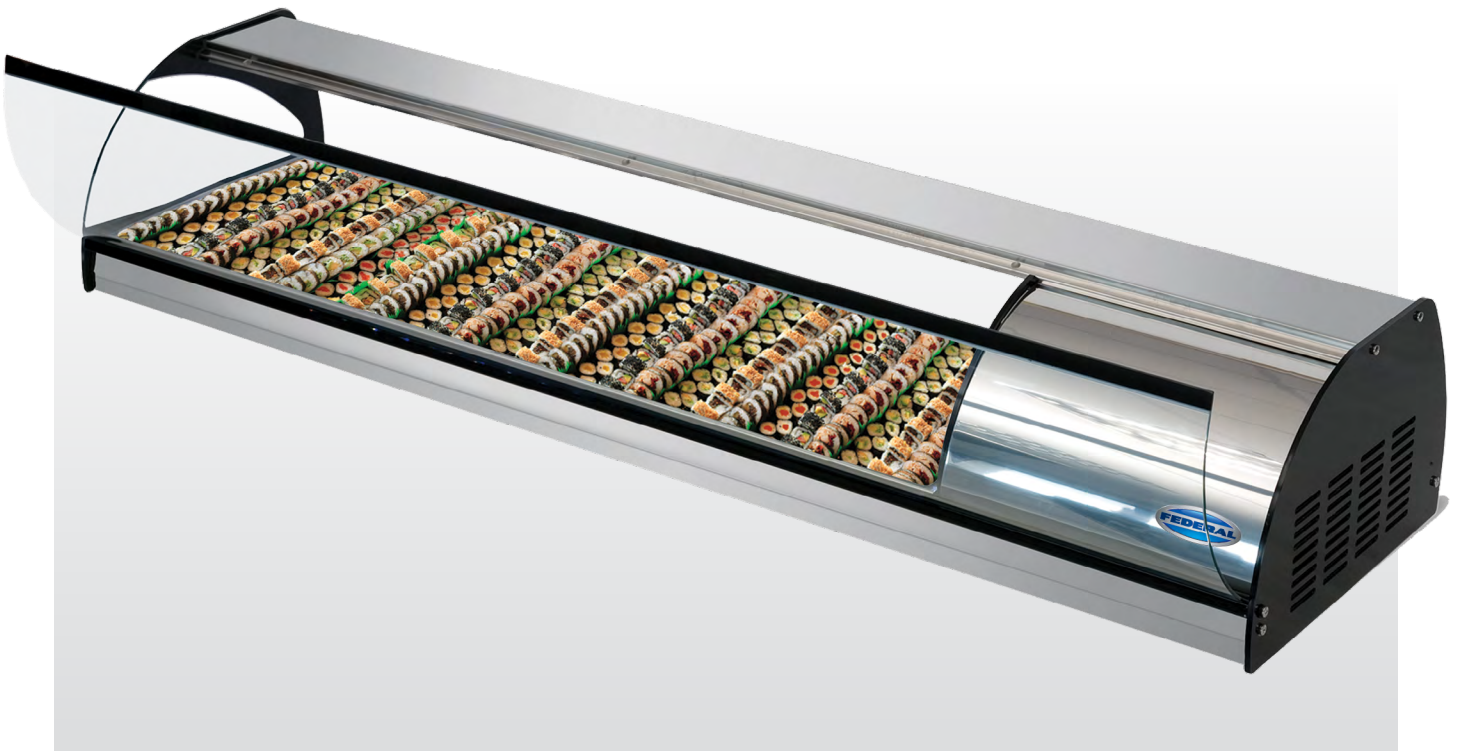


a Standex company

ITEM: _____ PROJECT NAME: _____ DATE: _____

FEDERAL COUNTER TOP SUSHI MERCHANDISER

MODEL CTS-43
 CTS-57
 CTS-70

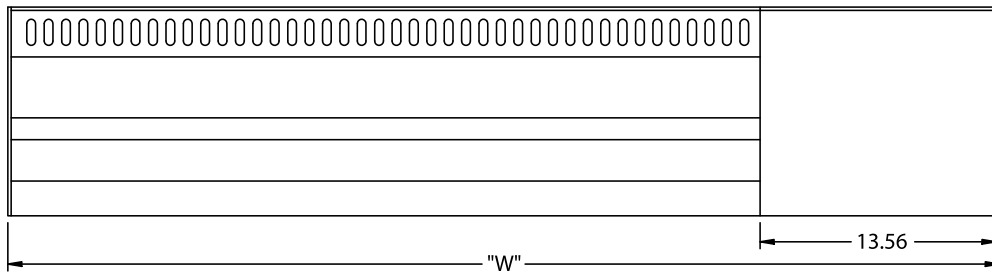
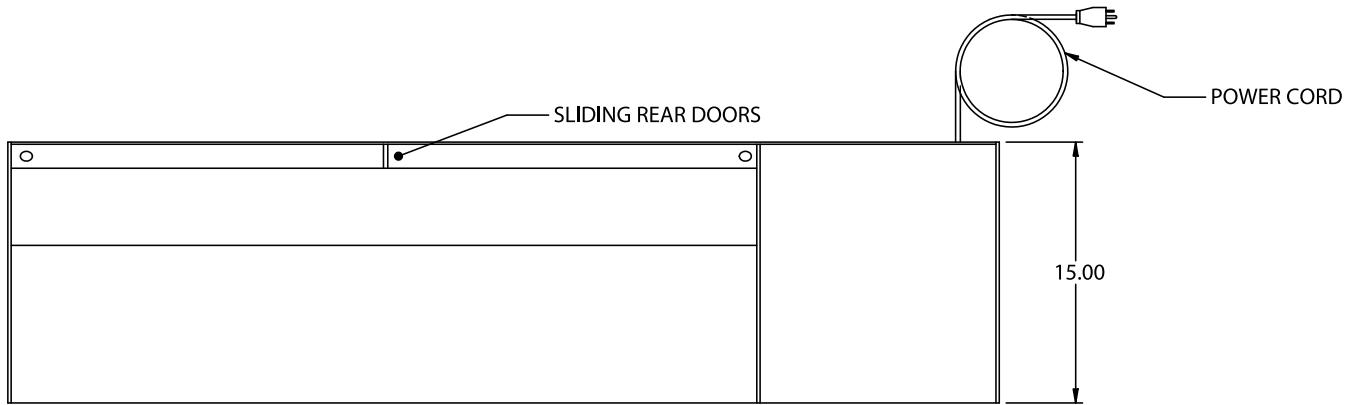
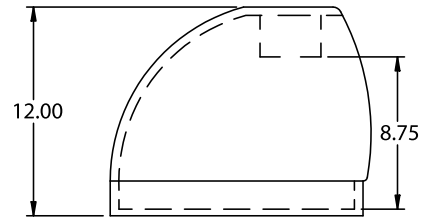


Federal's counter top sushi merchandiser combines attractive curved glass styling and LED lighting for maximum visual appeal.

STANDARD FEATURES

- Curved glass styling.
- LED lighting for a great presentation.
- Tempered front glass hinges for ease of cleaning.
- Double evaporator refrigeration system provides efficient cooling.
- Stainless steel exterior and merchandising plate.
- Electronic temperature control maintains average case temperature of 32 to 40 degrees.
- 134A refrigerant.
- Cord and plug, NEMA 5-15.
- Digital thermometer.
- Easily accessible light switch and adjustable temperature control.
- Rear sliding service doors.
- NSF and ETL listed.

COUNTER TOP SUSHI MERCHANDISER



SPECIFICATIONS:

Model	Dimensions L W H	Compressor (HP)	Electrical 115/60/1	Shipping Weight (lbs)
<input type="checkbox"/> CTS-43	43" x 15" x 12"	1/6	4 AMPS	145
<input type="checkbox"/> CTS-57	57" x 15" x 12"	1/6	4 AMPS	156
<input type="checkbox"/> CTS-70	70" x 15" x 12"	1/4	6 AMPS	171

- Refrigerated cases are designed to operate in a maximum environment of 75°F ambient and 55% relative humidity.
- Due to continuing engineering improvements, specifications are subject to change without notice.



The Signature of Quality

FEDERAL INDUSTRIES
A Standex Company

215 FEDERAL AVENUE, BELLEVILLE, WISCONSIN 53508-9201
PHONE: 800-356-4206 **FAX: 608-424-3234**
EMAIL: geninfo@federalind.com **WEBSITE: www.federalind.com**

