



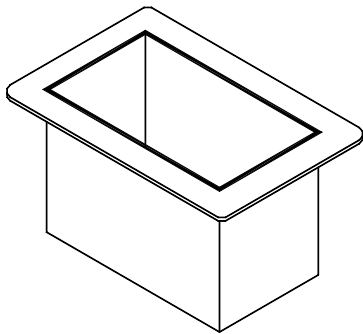
Drop - Ins

Spec Sheet No. DI-1

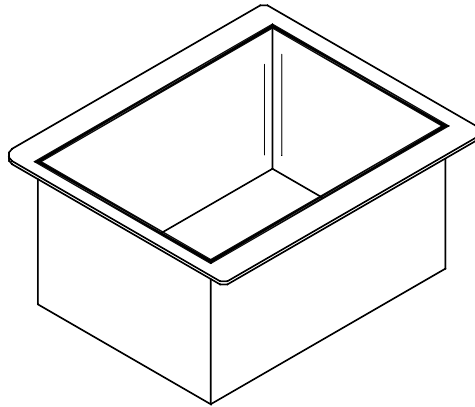
Job Name _____

Item No. _____

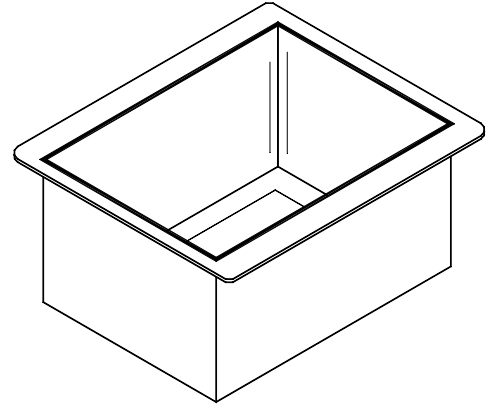
Ice Bins



D-12-IBL



D-24-IBL



D-24-IBL-7

Specifications

Ice Bin: 20 gauge 300 series stainless steel.

Molding : Extruded black polyethylene thermal breaker marine edge.

Jacket : 20 gauge galvanized steel.

Insulation : 2 lbs. density, foam in place insulation.

Cover : 20 gauge hinged stainless steel.

Plumbing : 1 I.P.S. drain, for cold plate units 1/2 I.P.S. drain.

Ice Capacity : D-12-IBL = 20-23 lbs.
D-24-IBL(7) = 45-50 lbs.

Shipping Weight : D-12-IBL = 22lbs.
D-24-IBL = 35lbs.
D-24-IBL-7 = 70lbs.



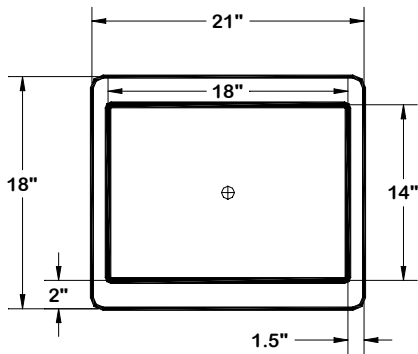
SupremeMetal
Alpharetta, GA 30004

Toll Free: 800-645-2526
Fax: 770-740-6010

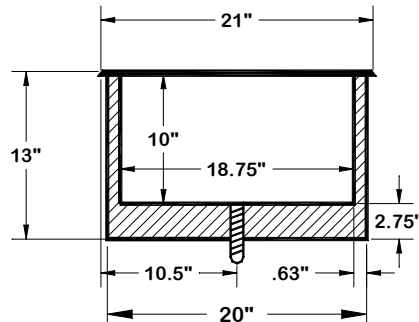
Drop - Ins

D-24-IBL

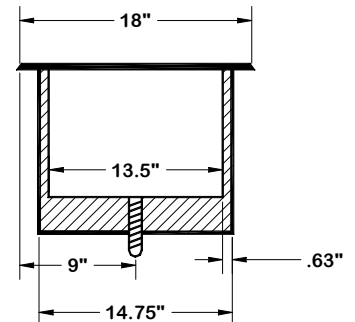
PLAN VIEW



ELEVATION VIEW



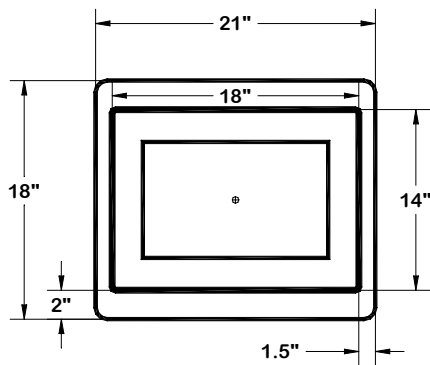
SECTIONAL VIEW



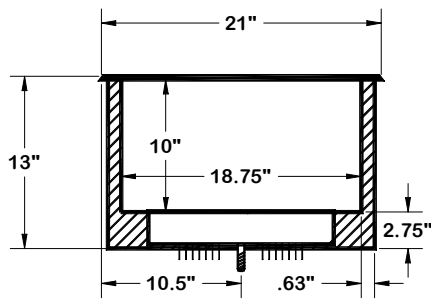
CUT OUT SIZE 20 3/8" X 15 1/4"

D-24-IBL-7

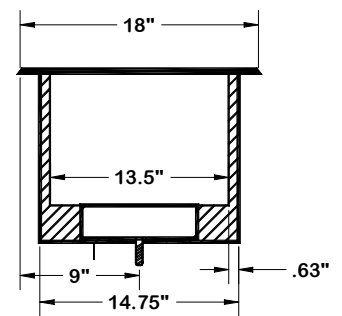
PLAN VIEW



ELEVATION VIEW



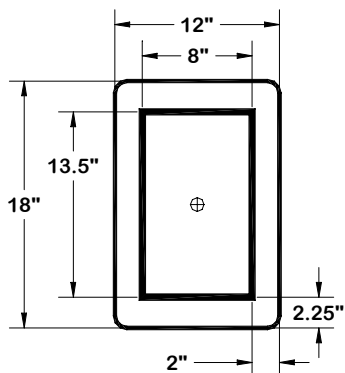
SECTIONAL VIEW



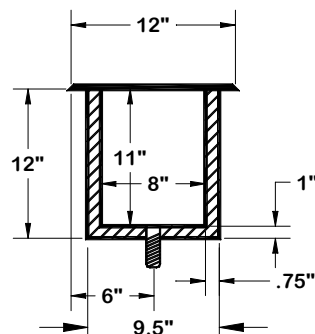
CUT OUT SIZE 20 3/8" X 15 1/4"

D-12-IBL

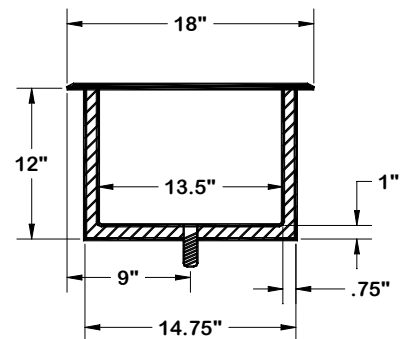
PLAN VIEW



ELEVATION VIEW



SECTIONAL VIEW



CUT OUT SIZE 15 3/8" X 9 3/4"