



McCall.

ITEM # _____	SIS #	AIA #
MODEL # _____		
PROJECT NAME _____		

DROP-IN HOT FOOD WELLS

DH Series Offered in Six Sizes

- DH-1 DH-3 DH-5
- DH-2 DH-4 DH-6



DH-3

Standard Features

- Self contained units
- All metal construction
- Individually controlled wells
- Wet-dry operation
- Manifoldd drain with shut off valve
- Control box prewired with 4' long harness for remote installation



McCall Refrigeration specification sheets are available online @ www.mccallrefrigeration.com

Approval : _____

SPECIFICATIONS

Construction - The DH series drop in heated pans are self-contained units with all metal construction. All joints and seams between wells and tops are closed and sealed. Each unit is designed to be installed in new or existing countertops. Sealing gasket and drain connection are provided. Well will accept up to 6" deep pans. Pans are not provided.

The well walls and bottoms are fully insulated with 2" thick superwool insulation. Top and rails are 16-gauge stainless steel construction for strength and durability.

Each unit is provided with a 1/2" drain, shut-off valve and a remote control panel with an infinite control for each pan. The control box is wired to the wall by a 4' long flexible metallic harness.

Designed to hold pre cooked products at serving temperatures between 140° to 160° F.

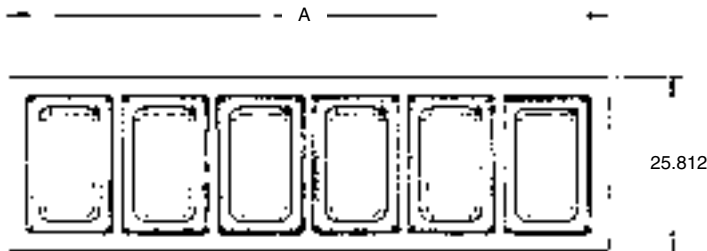
Single pan offered with cord and plug. Food pan and covers purchased separately.

AIA #

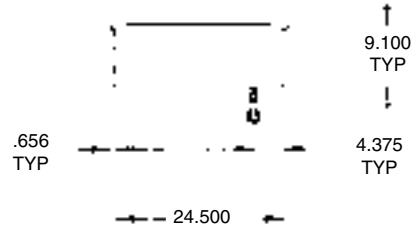
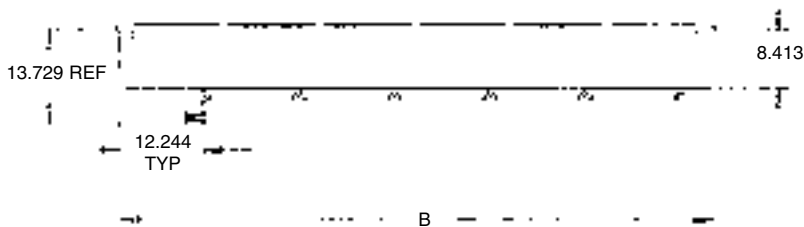


Model DH-1
 Model DH-2
 Model DH-3
 Model DH-4
 Model DH-5
 Model DH-6

DROP-IN HOT FOOD WELLS



MODEL	PANS	A (in)	B (in)	Cutout Size (Max.)
DH-1	1	17.813	16.713	16.96" x 24.75"
DH-2	2	31.7	30.588	30.83" x 24.75"
DH-3	3	45.6	44.463	44.71" x 24.75"
DH-4	4	59.5	58.338	58.58" x 24.75"
DH-5	5	73.3	72.213	72.46" x 24.75"
DH-6	6	87.2	86.088	86.34" x 24.75"



ELECTRICAL							
Base Model Number	DH-1 Cord & Plug	DH-1	DH-2	DH-3	DH-4	DH-5	DH-6
Voltage (60 hz, 1 ph)	115V	208/230V	208/230V	208/230V	208/230V	208/230V	208/230V
Total Amperage:	9	6	11	17	22	28	33
KW Heat	1	1.0/1.222	2.0/2.444	3.0/3.666	4.0/4.888	5.0/6.110	6.0/7.332

Specifications are subject to change without prior notification.

Bidding Specifications

McCall Drop-In shall have:

All metal construction. Closed and sealed joints between top and 16-gauge stainless steel top and rails.

OPTIONS

Description

- Removable bottom strain plate

McCall Refrigeration / 81 West Holly Street / Parsons, TN 38363
 Phone (731) 847-5570 / Fax (731) 847-9012 / 1-888-REACH-IN (1-888-732-2446) / www.mccallrefrigeration.com
 October 2003 / Printed in U.S.A.