

Foodservice Equipment • Material Handling, Healthcare & Cleanroom Equipment • Retail Display

Drawers for Stainless Steel and Hardwood Worktables



drawer with pull flange and full front



drawer with pull flange



enclosed drawer assembly



tier drawer



tier drawer with legs

Item #: _____
Model #: _____
Project #: _____
SIS #: _____

Optional Accessories	Model #	Qty.
Lock		
NSF drawer slides		

Drawers

- Includes zinc-plated steel full-extension slides with nylon rollers and rubber stops.
- Drawers with polymer slides available.
- Type 430 stainless steel.

Drawer Assemblies

- All drawer assemblies feature removable drawer pan.
- Type 430 stainless steel.
- Spec-Master® heavy duty drawer assemblies available—type 304 stainless steel.
- Optional lock available.

Tier Drawers

- Available with or without legs.
- Includes zinc-plated steel drawer slides.
- Type 430 stainless steel cabinet.

Other drawers available include Drawers with Polymer Slides, Spec-Master® Heavy Duty Drawer Assemblies, and Polymer Drawers. See inside.

Spec sheets available for viewing, printing or downloading from our online literature library at www.eaglegrp.com

Drawers with Polymer Slides



drawer with polymer slides

- Includes ½" (13mm)-thick polycarbonate grooved friction slides.
- Type 430 stainless steel.
- To specify drawer assemblies for hardwood tables, you must order model #605500 mounting kit along with drawer selected.
- To specify drawer assemblies for custom equipment (fabricated through SpecFAB®) which requires angle frame construction, you must order model #605499 mounting kit along with drawer selected.
- To specify drawer assemblies for tabletops with box marine edge, you must order model #607297 mounting kit along with drawer selected.

width x length x height in. mm	For all 24" (610mm) Standard Tables		For all 30" and 36" (787 and 914mm) Standard Tables		For 36" (914mm) Tables with Framing Specified at 30" (765mm) Center Lines	
	weight lbs. kg	model #	weight lbs. kg	model #	weight lbs. kg	model #
20" x 15" x 5" 508 x 381 x 127	13 5.8	502976*	13 5.8	503007*	13 5.8	503011*
20" x 20" x 5" 508 x 508 x 127	13 5.8	502975**	13 5.8	503006	13 5.8	503010

* Tables must be field drilled for mounting.

** Drawer #502975 will protrude passed tabletop width.

Drawers with Pull Flange



drawer with pull flange

- Includes zinc-plated steel slides with nylon rollers and rubber stops.
- Type 430 stainless steel.
- Tables must be field drilled for mounting drawer #502941.
- To specify drawer assemblies only for hardwood tables, you must order model #605500 mounting kit along with drawer selected.
- To specify drawer assemblies for custom equipment (fabricated through SpecFAB®) which requires angle frame construction, you must order model #605499 mounting kit along with drawer selected.

width x length x height in. mm	weight lbs. kg	model #
20" x 15" x 5" 508 x 381 x 127	13 5.8	502941*
20" x 20" x 5" 508 x 508 x 127	13 5.8	500772

* Tables must be field drilled for mounting.

Drawers with Pull Flange and Full Front



drawer with pull flange and full front

- Includes zinc-plated steel slides with nylon rollers and rubber stops.
- Type 430 stainless steel.
- Tables must be field drilled for mounting drawer #502942.
- To specify drawer assemblies for hardwood tables, you must order model #605500 mounting kit along with drawer selected.
- To specify drawer assemblies for custom equipment (fabricated through SpecFAB®) which requires angle frame construction, you must order model #605499 mounting kit along with drawer selected.

width x length x height in. mm	weight lbs. kg	model #
20" x 15" x 5" 508 x 381 x 127	25 11.3	502942*
20" x 20" x 5" 508 x 508 x 127	25 11.3	501571

* Tables must be field drilled for mounting.

Drawer Assemblies

- All drawer assemblies feature removable drawer pan. All shipping weights are approximate.
- Enclosed assemblies are type 430 stainless steel.
- Spec-Master® heavy duty drawer assemblies are type 304 stainless steel and feature insulated front and self-closing roller drawer slides that fully extend from housing.
- To specify drawer assemblies for hardwood tables, you must order model #605500 mounting kit along with drawer selected.
- To specify drawer assemblies for custom equipment (fabricated through SpecFAB®) which requires angle frame construction, you must order model #605499 mounting kit along with drawer selected.
- Optional lock available. To order, add suffix “-L”. Example: 502972-L

Enclosed Drawer Assemblies

width x length x height in. mm	weight lbs. kg	model #	OPTIONAL PAN REPLACEMENT model #
20" x 15" x 5" 508 x 381 x 127	35 15.9	502943*	608115
20" x 20" x 5" 508 x 508 x 127	35 15.9	501572	608118**

* Tables must be field drilled for mounting.

** Pan replacement #608118 does NOT fit drawer assembly #501572 with optional lock (#501572-L).
Drawer assembly #501572-L only accepts pan replacement #608119.

Spec-Master® Heavy Duty Drawer Assemblies

width x length x height in. mm	weight lbs. kg	model #	OPTIONAL PAN REPLACEMENT model #
20" x 15" x 5" 508 x 381 x 127	40 18.1	502972*	608117
20" x 20" x 5" 508 x 508 x 127	40 18.1	502971	606826

* Tables must be field drilled for mounting.



enclosed drawer assembly



Spec-Master® heavy duty drawer assembly

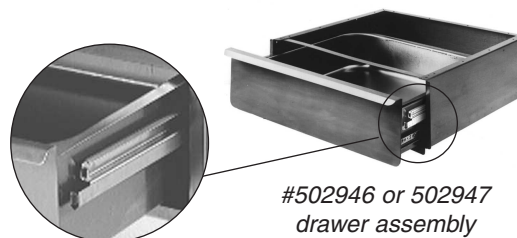
Drawer Assemblies with NSF-Approved Slides

- Utilizes a totally removable roller drawer slide, making it easy to clean for complete sanitation.
- Type 430 stainless steel.
- Requires no tools.
- Features include all-stainless steel housing, frame, drawer front complete with full-length front pull flange, and removable drawer pan with large radius corners.
- Optional lock available. To order, add suffix “-L”. Example: 502946-L

width x length x height in. mm	weight lbs. kg	model #	OPTIONAL PAN REPLACEMENT model #
20" x 15" x 5" 508 x 381 x 127	35 15.9	502947*	608115
20" x 20" x 5" 508 x 508 x 127	35 15.9	502946	608116**

* Tables must be field drilled for mounting.

** Pan replacement #608116 does NOT fit drawer assembly #502946 with optional lock (#502946-L).
Drawer assembly #502946-L only accepts pan replacement #608119.



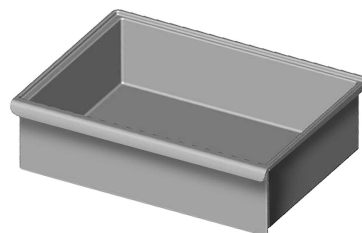
*removable NSF
drawer slide*

*#502946 or 502947
drawer assembly*

Polymer Drawers

- Made of heavy gauge polymer.
- With pull flange and built-in drawer stop.

width x length x depth in.	width mm	weight lbs.	weight kg	model #
13 $\frac{1}{2}$ " x 19" x 3"	352 x 483 x 76	9	4.1	502948
13 $\frac{1}{2}$ " x 19" x 6"	352 x 483 x 152	13	5.8	502949
13 $\frac{1}{2}$ " x 19" x 9"	352 x 483 x 229	18	8.2	502950



polymer drawer

Tier Drawers

Drawer slides are zinc-plated steel.

Regular Tier Drawers

- Heavy gauge type 430 stainless steel cabinet with three roller-track drawers.
 - Available with or without legs.
 - Includes guides, roller slides, and stainless steel drawer.
- All shipping weights are approximate.

width x length x height inches	width mm	description	weight lbs.	weight kg	model #
22 $\frac{1}{2}$ " x 24" x 22"	572 x 610 x 559	3 drawers, no legs	75	34.0	TD3
22 $\frac{1}{2}$ " x 24" x 34 $\frac{1}{2}$ "	572 x 610 x 876	3 drawers, with legs	78	35.4	TD3L



tier drawer



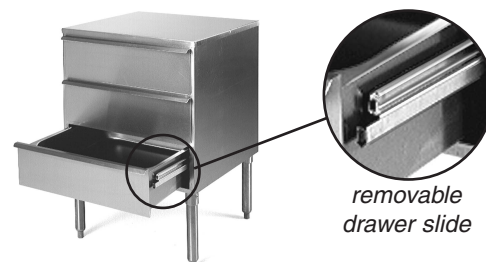
tier drawer with legs

NSF-Approved Tier Drawers



- Design and features are the same as tier drawers mentioned above.
- Utilizes totally removable drawer slide certified by the National Sanitation Foundation.
- Optional Pan Replacement available. Model #608120.

width x length x height inches	width mm	description	weight lbs.	weight kg	model #
22 $\frac{1}{2}$ " x 24" x 22"	572 x 610 x 559	3 drawers, no legs	75	34.0	NTD3
22 $\frac{1}{2}$ " x 24" x 34 $\frac{1}{2}$ "	572 x 610 x 876	3 drawers, with legs	78	35.4	NTD3L



*removable
drawer slide*

*model #NTD3L
with NSF-certified drawer*

Drawer Kits for all Stainless Steel Worktables

description	add suffix #
20" x 20" x 5" enclosed drawer assembly (#501572)	D1
20" x 20" x 5" drawer with pull flange and full front (#501571)	D2
20" x 20" x 5" drawer with pull flange (#500772)	D3