

## **ULTRA-MAX EQUIPMENT STANDS**

**Models UM-SM24S, UM-SM24SF, UM-SM24SFC,  
UM-SM36S, UM-SM36SF, UM-SM36SFC, UM-SM48S, UM-SM48SF,  
UM-SM48SFC, UM-SM60S, UM-SM60SF, UM-SM60SFC,  
UM-SM72S, UM-SM72SF & UM-SM72SFC**

### **Features/Benefits:**

- ★ Use equipment stands for Ultra-Max Char-Broilers, Griddles and Hot Plates.
- ★ Three different designs:
  - Pre-Cut Floor Models** - Pre-cut 19" Height with casters - stand connects to equipment
  - Floor Model Stands** - Stationary stand with bullet feet connects to equipment
  - Equipment Stands - (w/ Optional Casters)** Stand alone, choose between stationary models or stands with casters
- ★ Stainless steel stands available in 24", 36", 48", 60" and 72" widths.
- ★ Heavy-duty equipment stands have stainless top shelf.
- ★ Equipment stands have top shelves and equipped with 1" lip to prevent equipment from sliding off sides and back.
- ★ Floor models have bullet feet with one inch adjustment.
- ★ Optional four piece caster set available for all stands.

### **Applications:**

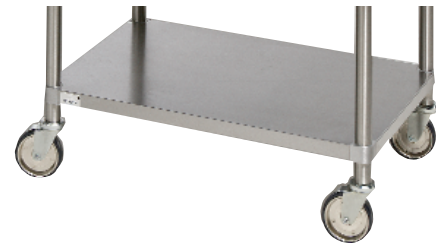
Heavy-duty equipment stands provide years of trouble free service and secure accurate cooking height for all Ultra-Max equipment.

### **Quality Construction:**

Stands are constructed of heavy gauge stainless steel. Legs are 1-5/8" (4.1cm) diameter stainless steel pipe that add strength and durability.

### **Warranty:**

Equipment stands are covered by Star's one year parts and labor warranty.



**Models ES-SM36SFC  
Pre-Cut Floor Models**



**Models ES-SM36SF  
Floor Model**



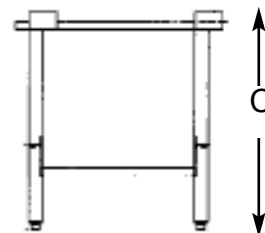
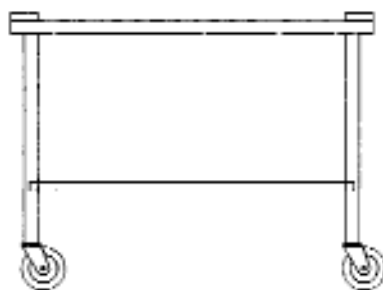
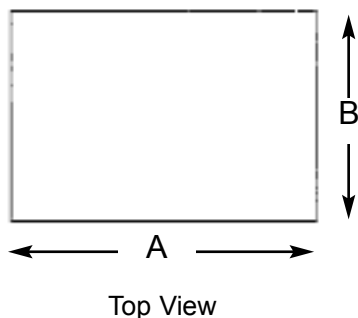
**Models ES-SM36S  
Casters Optional**





## ULTRA-MAX EQUIPMENT STANDS

**Models UM-SM24S, UM-SM24SF, UM-SM24SFC, UM-SM36S, UM-SM36SF, UM-SM36SFC, UM-SM48S, UM-SM48SF, UM-SM48SFC, UM-SM60S, UM-SM60SF, UM-SM60SFC, UM-SM72S, UM-SM72SF & UM-SM72SFC**



### Specifications

Model No.	Description	(A) Width Inches (cm)	(B) Depth Inches (cm)	(C) Height Inches (cm)	Shipping Weight lbs. (kg)
<b>Pre-Cut Floor Stands with Casters</b>					
ES-UM24SFC	24" Stainless Steel Floor Model	23 (58.4)	24-1/4 (61.6)	19 (48.26)	51 (23.2)
ES-UM36SFC	36" Stainless Steel Floor Model	35 (88.9)	24-1/4 (61.6)	19 (48.26)	68 (30.9)
ES-UM48SFC	48" Stainless Steel Floor Model	47 (119.3)	24-1/4 (61.6)	19 (48.26)	88 (39.9)
ES-UM60SFC	60" Stainless Steel Floor Model	59 (149.9)	24-1/4 (61.6)	19 (48.26)	105 (47.7)
ES-UM72SFC	72" Stainless Steel Floor Model	71 (180.3)	24-1/4 (61.6)	19 (48.26)	122 (55.4)
<b>Floor Model Stands with Bullet Style Feet</b>					
ES-UM24SF	24" Stainless Steel Floor Model	23 (58.4)	24-1/4 (61.6)	24 (61)	25 (11.3)
ES-UM36SF	36" Stainless Steel Floor Model	35 (88.9)	24-1/4 (61.6)	24 (61)	36 (16.3)
ES-UM48SF	48" Stainless Steel Floor Model	47 (119.4)	24-1/4 (61.6)	24 (61)	42 (19.1)
ES-UM60SF	60" Stainless Steel Floor Model	59 (149.9)	24-1/4 (61.6)	24 (61)	49 (22.2)
ES-UM72SF	72" Stainless Steel Floor Model	71(180.3)	24-1/4 (61.6)	24 (61)	56 (25.4)
<b>Equipment Stands (Casters Optional)</b>					
ES-UM24S	24" All Stainless Steel	24 (61.0)	30 (76.2)	24 (61.0)	51 (23.2)
ES-UM36S	36" All Stainless Steel	36 (91.4)	30 (76.2)	24 (61.0)	68 (31.0)
ES-UM48S	48" All Stainless Steel	48 (121.9)	30 (76.2)	24 (61.0)	88 (40.0)
ES-UM60S	60" All Stainless Steel	60 (152.4)	30 (76.2)	24 (61.0)	105 (47.7)
ES-UM72S	72" All Stainless Steel	72 (182.8)	30 (76.2)	24 (61.0)	122 (55.4)
SM-CAST	Caster Kit (4 in a set) (Casters will add 6" to height of stand).				

### Typical Specifications

Equipment Stands are constructed of heavy duty stainless steel with 1-5/8" (4.1 cm) diameter stainless steel pipe legs for added strength and durability. Plastic feet with an adjustment of 1" (2.5 cm) are standard on stationary stands. The lower shelf on the stand is stainless steel, the top shelf has tabs to prevent units from sliding off rear or side of stand. Equipment stands are listed by National Sanitation Foundation. Printed in the U.S.A.

Star Manufacturing - 10 Sunnen Drive - P.O. Box 430129 - St. Louis, MO 63143-3800