

D**FULL JACKETED TILTING
TRI AND QUAD-LEG
DIRECT STEAM KETTLE**

JOB NAME: _____

ITEM NO.: _____

NO. REQUIRED: _____

MODELS:

- FT-20LF 20 Gallon (76 liter) Tri-Leg
- FT-30LF 30 Gallon (114 liter) Quad-Leg
- FT-40LF 40 Gallon (152 liter) Quad-Leg
- FT-60LF 60 Gallon (227 liter) Quad-Leg

DESCRIPTION: Will be a Market Forge direct steam connected, tilting tri-leg, steam jacketed. Kettle will be constructed of welded satin finish stainless steel, type 304. A double wall kettle interior will form a full jacket around the lower of the kettle. The kettle bottom will be of elliptical design for superior heat circulation.

The 20 gallon will be on a Tri-leg mounting frame of stainless steel pipe and the 30-60 gallon will be on a Quad-leg mounting frame of stainless steel pipe. Both the Tri and Quad stainless steel pipe mounting frames will conceal the steam piping. Each leg will be fitted with a four-hole adjustable flange foot for securing to the floor.

A sealed stainless steel tilt mechanism will permit the kettle to tilt forward a full 90° for complete emptying. Tilting mechanism will be self-locking for positive stop action. Steam control valve will be mounted on right hand control box.

Unit will include as standard a steam control kit (CKT-1), and a Steam trap that includes a steam control valve (steam inlet globe valve) and line strainer.

OPERATION WILL BE BY: Direct steam at 5-35 PSI (0.3-2.5 kg/cm²). Over 35 PSI (2.5 kg/cm²), a pressure reducing valve is required.

STEAM FLOW REQUIREMENTS: 34 lbs. (15.5 kg) steam per hour or 1 BHP per 20 gallons (76 liters) pf kettle capacity.

MODEL	BHP/Hour	Lbs. Steam/Hour
FT-20LF	1.0	34.5
FT-30LF	1.5	52.0
FT-40LF	2.0	69.0
FT-60LF	3.0	103.5



FT-40LF Shown

OPTIONAL AT EXTRA COST:

- One-piece lift-off stainless steel cover.
- One-piece counterbalance hinged stainless steel cover.
- Double pantry faucet with swing spout and mounting bracket.
- Single pantry faucet with swing spout and mounting bracket.
- Triple basket assembly.
- 2" draw-off valve with strainer.
- 3" draw-off valve with strainer.
- Check valve.
- Wall models (consult factory).
- Graduated measuring stick.
- BFT - ball float trap.
- PRV - pressure reducing valve.
- Type 316 stainless steel liner for high acid content products.
- Etched Gallon Markings.

The manufacturer reserves the right to modify materials and specifications without notice.

SPEC SHEET: S-6017
02/10FOOD SERVICE EQUIPMENT
Full Jacketed Tilting Kettle

Printed in U.S.A.

**MARKET FORGE**
INDUSTRIES INC.35 Garvey Street • Everett • MA • 02149
Tel: (617) 387-4100, (866) 698-3188 • Fax: (800) 227-2659, (617) 387-4456
custserv@mfi.com • www.mfi.com

A City Discount

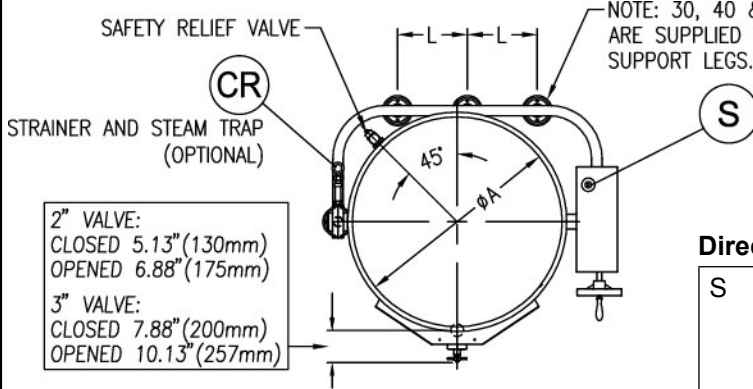
D**FULL JACKETED TILTING TRI AND QUAD-LEG DIRECT STEAM KETTLE**

DETAILS & DIMENSIONS

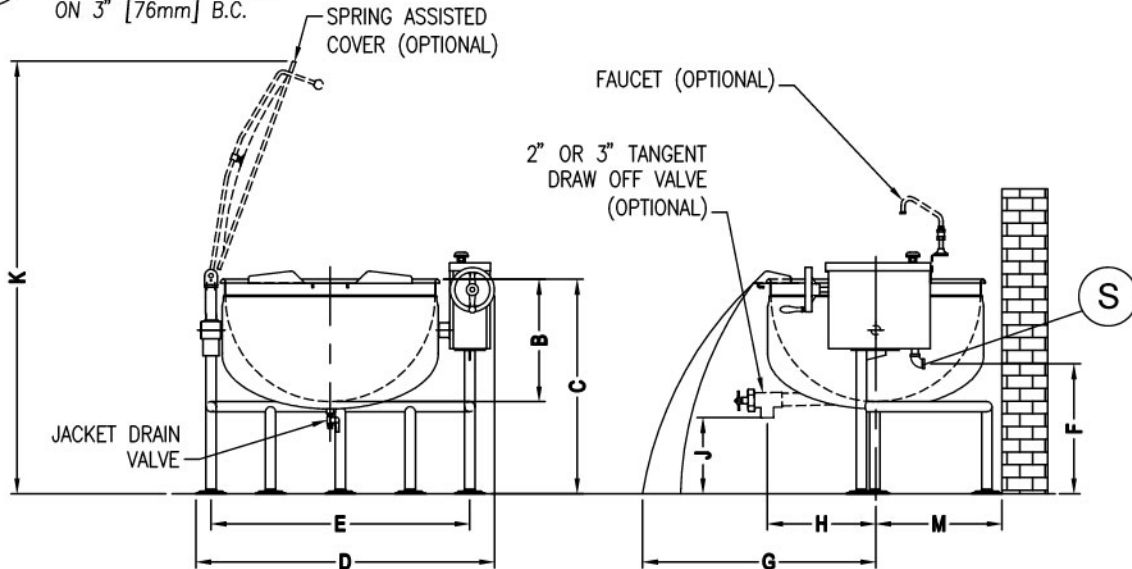
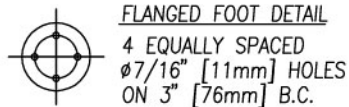
DIMENSIONS

MODEL	UNITS	A	B	C	D	E	F	G	H(2")	H(3")	J(2")	J(3")	K	L	M
FT-20LF	inches mm	26 660	15.75 400	34.75 883	39.75 1010	33.5 850	20.25 514	—	13 330	15.25 387	12.5 318	12 305	63 1600	NONE	16.38 416
FT-30LF	inches mm	29.5 749	17.5 445	34.5 876	43.25 1100	37 940	21.5 546	—	15.5 394	15.5 394	14.5 368	14 356	65.63 1667	9.5 241	18.38 467
FT-40LF	inches mm	33 840	19.25 489	33.75 857	46.75 1185	40.5 1030	20 508	—	14.5 368	16.25 413	12.5 318	12 305	67.25 1709	11 279	19.88 505
FT-60LF	inches mm	35.5 902	20.5 521	35 889	49.25 1251	43 1092	21 533	—	18 457	20.25 514	10.5 267	10 254	71.88 1826	12.5 318	21.5 546

NOTE: 30, 40 & 60 GALLON KETTLES ARE SUPPLIED WITH 2 REAR SUPPORT LEGS.

**SERVICE CONNECTIONS****Direct Steam**

S	Steam Supply - 3/4" IPS (19mm) at 5-35 PSI (0.3-2.5 kg/cm ²). Over 35 PSI (2.5 kg/cm ²). Pressure reducing valve is required if incoming pressure exceeds jacket rating.
CR	Condensate Return - 1/2" IPS (13mm)



It is our policy to build equipment which is design certified by A.S.M.E. and N.S.F. However, a continuing program of product improvement makes it necessary to submit new models to the agencies as they are developed and consequently not all models bear the appropriate agency labels.

SPEC SHEET: S-6017
02/10**FOOD SERVICE EQUIPMENT**
Full Jacketed Tilting Kettle**MARKET FORGE**
INDUSTRIES INC.

35 Garvey Street • Everett • MA • 02149
Tel: (617) 387-4100, (866) 698-3188 • Fax: (800) 227-2659, (617) 387-4456
custserv@mfi.com • www.mfi.com

A City Discount