

D**TILTING TRI-LEG
DIRECT STEAM KETTLE**

JOB NAME: _____

ITEM NO.: _____

NO. REQUIRED: _____

- MODELS:**
- FT-20L - 20 Gallon (76 liters)
 - FT-30L - 30 Gallon (114 liters)
 - FT-40L - 40 Gallon (152 liters)
 - FT-60L - 60 Gallon (227 liters)
 - FT-80L - 80 Gallon (303 liters)
 - FT-100L - 100 Gallon (379 liters)

DESCRIPTION: Will be a Market Forge direct steam connected, tilting tri-leg, steam jacketed. Kettle will be constructed of welded satin finish stainless steel, type 304. A double wall kettle interior will form a 2/3 steam jacket around the lower of the kettle. The kettle bottom will be of elliptical design for superior heat circulation.

Tri-leg mounting frame of stainless steel pipe will conceal the steam piping. Each leg will be fitted with a four-hole adjustable flange foot for securing to the floor. A sealed stainless steel tilt mechanism will permit the kettle to tilt forward a full 90° for complete emptying. Tilting mechanism will be self-locking for positive stop action. Steam control valve will be mounted on right hand control box.

Unit will include as standard a steam control kit (CKT-1), and a Steam trap that includes a steam control valve (steam inlet globe valve) and line strainer.

OPERATION WILL BE BY: Direct steam at 5-30 PSI (0.3-2.1 kg/cm²). Over 30 PSI (2.1 kg/cm²), a pressure reducing valve is required.

STEAM FLOW REQUIREMENTS: 34 lbs. (15.5 kg) steam pre hour or 1 BHP per 20 gallons (76 liters) pf kettle capacity.

MODEL	BHP/HR	LBS STEAM/HR	SHIP WT.
FT-20L	1.0	34.5	240 lbs.
FT-30L	1.5	52.0	285 lbs.
FT-40L	2.0	69.0	332 lbs.
FT-60L	3.0	103.5	356 lbs.
FT-80L	4.0	138.0	424 lbs.
FT-100L	5.0	172.5	480 lbs.



Model FT-40L Shown

OPTIONAL AT EXTRA COST:

- One-piece lift-off stainless steel cover.
- One-piece counterbalance hinged stainless steel cover.
- Double pantry faucet with swing spout and mounting bracket.
- Single pantry faucet with swing spout and mounting bracket.
- Triple basket assembly.
- 2" draw-off valve with strainer.
- 3" draw-off valve with strainer.
- Check valve.
- Wall models (consult factory).
- Graduated measuring stick.
- BFT - ball float trap.
- PRV - pressure reducing valve.
- Type 316 stainless steel liner for high acid content products.

The manufacturer reserves the right to modify materials and specifications without notice.

SPEC SHEET: S-2116J
10/13FOOD SERVICE EQUIPMENT
Tilting Tri-Leg Kettle

Printed in U.S.A.

**MARKET FORGE**
INDUSTRIES INC.35 Garvey Street • Everett • MA • 02149
Tel: (617) 387-4100, (866) 698-3188 • Fax: (800) 227-2659, (617) 387-4456
custserv@mfi.com • www.mfi.com

A City Discount

D

TILTING TRI-LEG DIRECT STEAM KETTLE

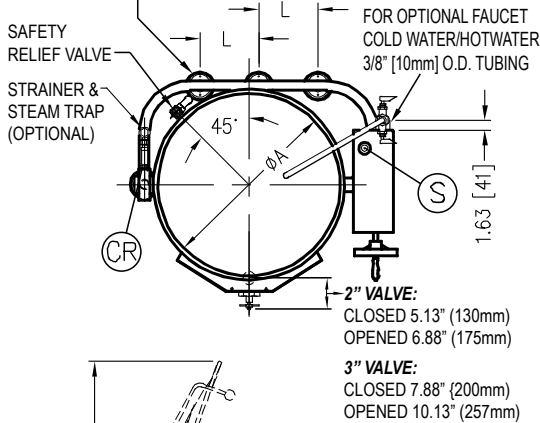
DETAILS & DIMENSIONS

MODEL	A	B	C	D	E	F	G	H (2")	H (3")	J (2")	J (3")	K	L	M
FT-20L	21 535	18 460	37 940	34.75 885	28.5 724	22 558	25.63 651	12 305	13.25 337	17 432	16.5 419	59.5 1512	--	15.38 391
FT-30L	24 610	20 510	37 940	37.75 960	31.5 800	20.75 527	27.13 689	12.5 317	14.25 362	15 381	14.5 368	62.5 1588	--	15.38 391
FT-40L	26 660	22.5 570	37 940	39.75 1010	33.5 850	20.25 514	28.63 727	13 330	15.25 387	12.5 318	12 305	64 1626	--	16.38 416
FT-60L	29.5 749	26 660	40.5 1029	43.25 1100	37 940	21.5 546	30.13 765	15.5 394	15.5 394	14.5 368	14 356	74 1879	9.5 241	18.38 467
FT-80L	33 838	28 710	42.5 1080	46.75 1185	40.5 1030	20 506	32.63 828	14.5 368	16.25 413	12.5 318	12 305	76 1930	11 279	19.88 505
FT-100L	35.5 802	30 762	42.5 1080	49.25 1251	43 1092	21 533	39.25 997	18 457	20.25 514	10.5 267	10 254	79 2007	12.5 318	21.5 546

SPEC SHEET: S-2116J
10/13

FOOD SERVICE EQUIPMENT
Tilting Tri-Leg Kettle

NOTE: 60, 80 & 100 GALLON KETTLES ARE SUPPLIED WITH 2 REAR SUPPORT LEGS



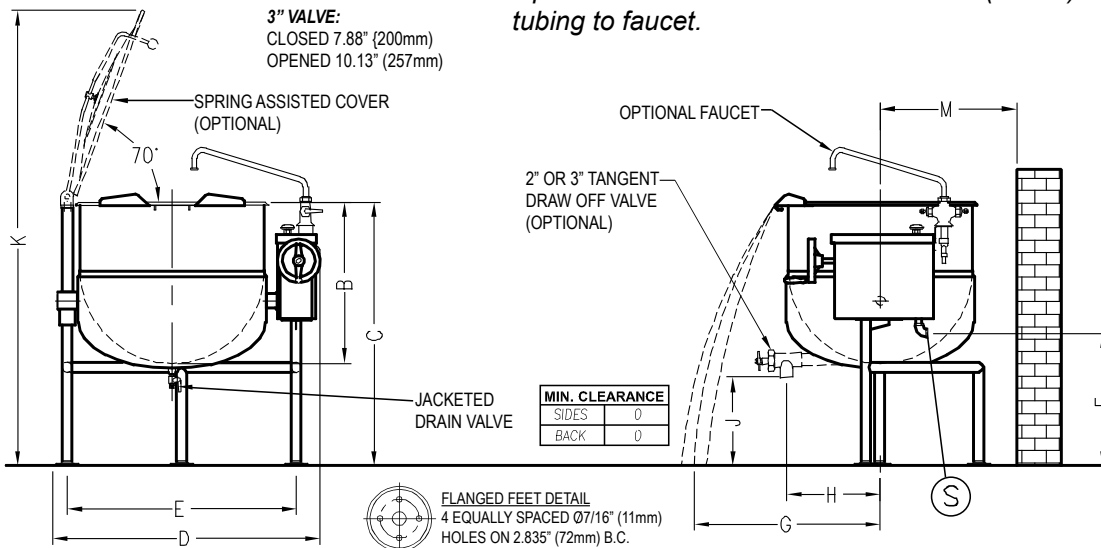
SERVICE CONNECTIONS

Direct Steam

S	Steam Supply - 3/4" IPS (19mm) at 5-30 PSI (0.3-2.1 kg/cm ²). Optional 5-45 PSI (0.3-3.1 kg/cm ²).*
CR	Condensate Return - 1/2" IPS (13mm)†

* Pressure reducing valve is required if incoming pressure exceeds rating at kettle.
† Optional at extra cost.

Optional cold and hot water faucet: 3/8" (10mm) O.D. tubing to faucet.



It is our policy to build equipment which is design certified by A.G.A., U.L., A.S.M.E., N.S.F., C.G.A. and C.S.A. However, a continuing program of product improvement makes it necessary to submit new models to the agencies as they are developed and consequently not all models bear the appropriate agency labels.



35 Garvey Street • Everett • MA • 02149
Tel: (617) 387-4100, (866) 698-3188 • Fax: (800) 227-2659, (617) 387-4456
custserv@mfi.com • www.mfi.com

A City Discount