

## Portion Control Grinder with 2 Hoppers



### Model G9-2 HD\*

(funnel sold separately)

Dimensions: 25"H x 8"W x 17.8"D  
(63.5cm H x 20.3cm W x 45.2cm D)

## Features

### Portion Control Grinder

- Two hoppers hold 6 lbs. (2.7 Kg) each of regular and decaf or specialty beans.
- Selected models interface to compatible BUNN brewers.
- Portion controlled for the right amount of coffee every time.
- Precision burrs for consistent, commercial-quality grind.
- The G92T HD accommodates larger brew funnels.
- Multi-set available.
- International electrical configurations available.



### Model G9-2T DBC\*

(funnel sold separately)

Dimensions: 25"H x 8"W x 17.8"D  
(63.5cm H x 20.3cm W x 45.2cm D)

### BrewWISE® DBC Portion Control Grinder

- Two hoppers hold 6 lbs. (2.7 Kg) each of regular and decaf or specialty beans.
- Stores individual coffee grind profiles.
- Operate any combination of equipment error-free with wireless brewer-grinder interface via Smart Funnel™ and Dual Soft Heat® DBC brewer.
- Portion controlled for the right amount of coffee every time with 3 batch sizes per hopper.

For current specification sheets and other information, go to [www.bunn.com](http://www.bunn.com).

\* International models may vary in appearance.

## Related Products

### Precision Burrs

All BUNN grinders use precision burrs to cut (not crush) the coffee beans and deliver consistent grind distribution. BUNN burrs are rated at a Rockwell hardness of 66C, resulting in an exceptionally long burr life.



| Model     | Agency Listing | International Model | Agency Listing |
|-----------|----------------|---------------------|----------------|
| G9-2 HD   | UL (ETL)       | G9-2TA HD           | CE             |
| G9-2T HD  | UL (ETL)       | G9-2TA DBC          | CE             |
| G9-2T DBC | UL (ETL)       |                     |                |

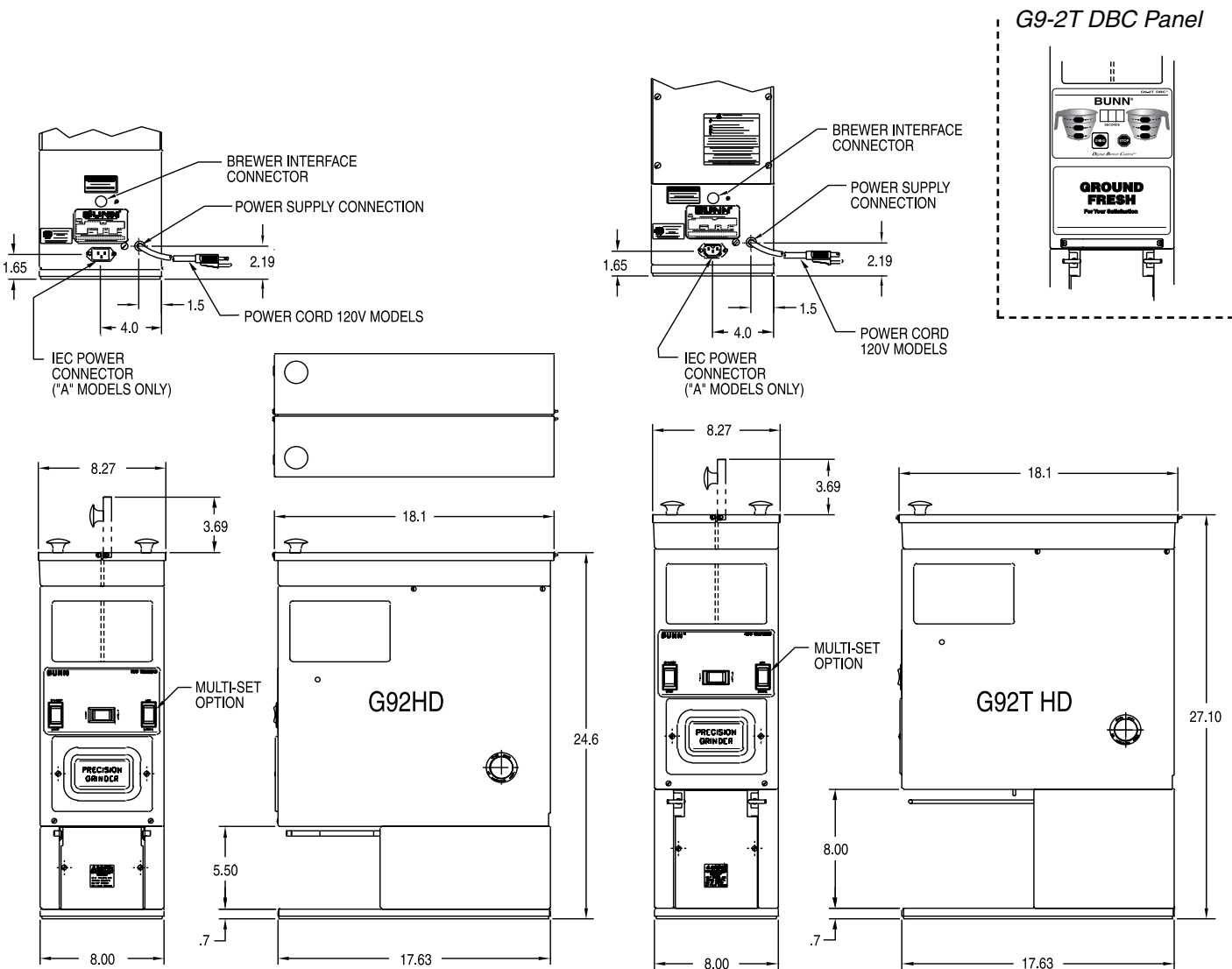
# Dimensions & Specifications

| Model                  | Product #  | Volts | Amps | Capacity          | Cu. Ft. | Shipping Weight   | Cord Attached    |
|------------------------|------------|-------|------|-------------------|---------|-------------------|------------------|
| G9-2 HD†               | 24250.0000 | 120   | 9.4  | 6 lbs. per hopper | 6       | 67 lbs. (30.4 kg) | Yes <sup>Δ</sup> |
| G9-2 HD-S*             | 24250.0006 | 120   | 9.4  | 6 lbs. per hopper | 6       | 66 lbs. (30.0 kg) | Yes <sup>Δ</sup> |
| G9-2T HD†              | 24250.0021 | 120   | 9.4  | 6 lbs. per hopper | 6       | 68 lbs. (30.9 kg) | Yes <sup>Δ</sup> |
| G9-2T HD† <sup>f</sup> | 24250.0009 | 120   | 9.4  | 6 lbs. per hopper | 6       | 67 lbs. (30.4 kg) | Yes <sup>Δ</sup> |
| G9-2T DBC**            | 33700.0000 | 120   | 9.4  | 6 lbs. per hopper | 6       | 67 lbs. (30.4 kg) | Yes <sup>Δ</sup> |

\*Analog †Brewer interface †Black decor \*\*Wireless interface <sup>Δ</sup>Power cord (NEMA 5-15P) 15 Amp-120V machine only.

G9-2T-HD accepts large brew funnels for System III, Dual and other large BUNN® Brewers.

Electrical: 2-wires plus ground service rated 120V, 60Hz, circuit required, ¾HP motor.



BUNN Corporation - 1400 Stevenson Drive Springfield, Illinois 62703 • 800-637-8606 • 217-529-6601 • Fax 217-529-6644 • www.bunn.com

BUNN® practices continuous product research and improvement. We reserve the right to change specifications and product design without notice. Such revisions do not entitle the buyer to corresponding changes, improvements, additions or replacements for previously purchased equipment.

All dimensions shown in inches. Bunn Corporation owns all copyrights relating to materials in this publication. Please contact Bunn Corporation to request permission to reproduce any portion of this publication.