

SCOTSMAN

30 INCH WIDE HOTEL/MOTEL ICE CUBE DISPENSER AND CUBER



HD30 shown with CME256 Cuber

30" HOTEL DISPENSER WITH ICE MACHINE

iceValet™

HD30 HOTEL DISPENSER

- Stores up to 180 lbs. of contour cube ice.
- New simple push chute for easy ice dispensing.
- Modern, stylish design in a stainless steel cabinet.
- Removeable top panel allows access to the bin for easy cleaning without having to remove the ice cube machine.
- Deep sink to accommodate almost every size hotel ice bucket.
- Available with water glass filler and coin/token options.
- Equipped with 11 ft. power cord.

CM³ ICE MACHINES: CME256, CME506, CME656

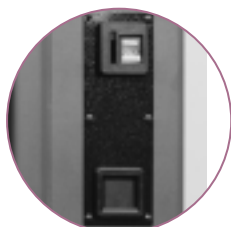
- CM³ series offers the lowest lifetime operating costs based on lower water and electrical usage. Combine that with a competitive purchase price and the best warranty in the industry and you have the lowest lifetime ownership cost. Period.
- AutolQ™ Control System monitors and controls the ice machine's functions to ensure consistent ice production and reduce operating costs.
- CM³ Evaporator is a hot tin-dipped, molecularly bonded plate that has been field tested and proven 99.4% reliable over 5 years.
- Rust-free Polyethylene Base & Food Zone is insulated with 1-1/2" of foam which keeps water and food zone cool to reduce operating costs and is backed by a Lifetime Rust-free Warranty.

DISPENSER WARRANTY *See your dealer for complete warranty details.*

- 3 years parts and labor on all components.

CUBER WARRANTY *See your dealer for complete warranty details.*

- Limited Lifetime Rust Free Warranty on Food Zone.
- 3 years parts and labor on all components.
- 5 years parts and labor on the CME evaporator.
- 5 years parts on the compressor and condensor.



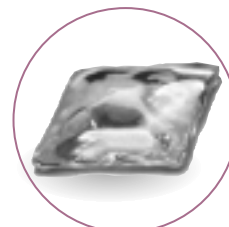
COIN OPTION



WATER FILLER
OPTION






EASY PUSH CHUTE
FOR ICE DISPENSING



APPROX. CUBE SIZE:
1 3/8" X 1 3/8" X 5/8" THICK

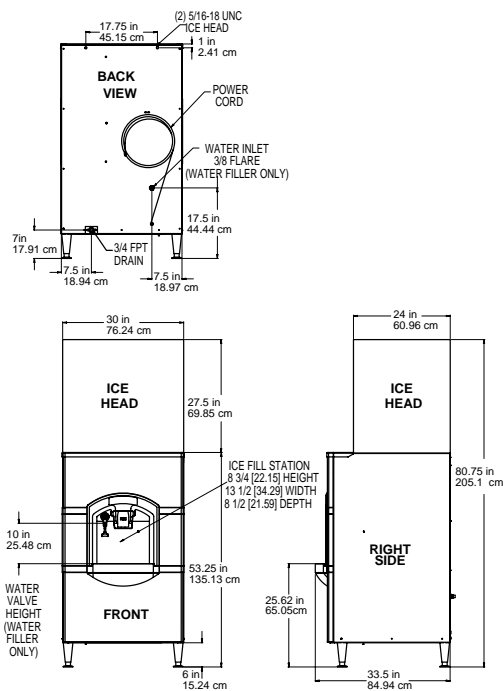
CERTIFIED
ISO
9001:2000

This product qualifies for the following listings:
  
Rated in accordance with ARI standard 820-95

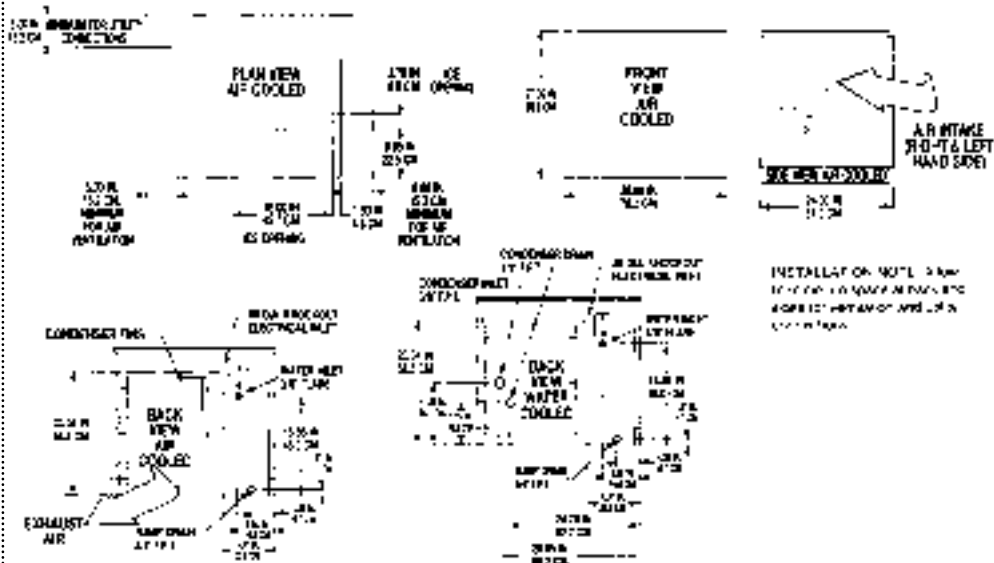
 **Scotsman®**

Hotel Dispenser/Ice Machine Specifications

DISPENSER



ICE MACHINE



INSTALLATION NOTE: Allow 6" minimum space at back and sides for ventilation and utility connections.

Modular Cuber Specifications Dimensions: W x D x H 30" x 24" x 27" Shipping Carton: 31 1/2" x 28" x 32 1/2"

Model Number	Ice Production -24 Hr. ARI 70°/50° F lbs./kg.	90°/70° F lbs./kg.	Condenser	Electrical	Max Fuse	Comp HP	Circuit Wires	Minimum Circuit Amp	BTUs	Ship Weight	Power Consumption KWH/100 lbs. 90°/70° F	Water Usage Gallons / 100lbs. Potable 90°/70° F	Condenser 90°/70° F
CME256AS-1F	307/139	240/109	Air	115/60/1	20	1/2	2	16.0	5,100	185/84	9.0	16	N/A
CME256AS-32F	307/139	240/109	Air	208-230-60/1	15	1/2	2	7.9	5,100	185/84	9.0	16	N/A
CME256WS-1F	320/145	260/118	Water	115/60/1	20	1/2	2	16.0	5,100	185/84	7.6	16	180
CME506AS-1F	500/227	395/179	Air	115/60/1	20	3/4	2	19.0	6,275	205/93	7.3	15	N/A
CME506AS-32F	500/227	395/179	Air	208-230/60/1	15	3/4	2	8.9	6,275	205/93	7.3	15	N/A
CME506WS-1F	510/231	420/191	Water	115/60/1	20	3/4	2	19.0	6,275	205/93	6.7	15	170
CME656AS-32F	705/320	583/264	Air	208-230/60/1	15	1-1/2	2	13.6	12,500	225/102	6.1	15	N/A
CME656WS-32F	645/293	575/261	Water	208-230/60/1	15	1-1/2	2	12.7	12,500	225/102	6.0	15	130

Ice Dispenser Specifications Dimensions: W x D x H 30" x 33.5" x 53.25" Includes 6" legs Shipping Carton: 33.25" x 36.50" x 57.75"

Model Number	Actuation	ARI Bin Capacity lbs/kg	Electrical	No. of Wires	Minimum Circuit Amp	Max Fuse	Ship Weight lb./kg
HD30B-1A	Push	180/81	115/60/1	2	2.1	15	220/99
HD30W-1A*	Push	180/81	115/60/1	2	2.1	15	224/101
HD30N-1A	Coin or Token	180/81	115/60/1	2	2.1	15	220/99

* Unit comes with a water spout next to ice chute

Overall Dimension (WxDxH) of the Cuber with the Dispenser is 30" x 33.5" x 80.75"

OPTIONS:

KTOKN: 500 tokens for use with HD30N-1A, 984" diameter.

Scotsman's ice machines are not designed for outdoor installations. Scotsman remote condensers are designed for outdoor installations.

Machine requires voltage indicated on rating name plate. Failures caused by improper voltage are not considered factory defects. Extended periods of operation at temperatures exceeding limitations constitutes misuse under the terms of Scotsman Manufacturer's Limited Warranty, resulting in a loss of warranty coverage. Specifications and design are subject to change without notice.

IMPORTANT OPERATING REQUIREMENTS:

	Minimum	Maximum
Air Temperatures	50°F (10°C)	100°F (37.7°C)
Water Temperatures	40°F (4.4°C)	100°F (37.7°C)
Remote Cond. Temps	-20°F (-28.9°C)	120°F (48.9°C)
Water Pressures	20 PSIG	120 PSIG
Dispenser Electrical Voltage	-10%	+10%

YOU'LL VALUE THE DIFFERENCE.™

775 Corporate Woods Parkway • Vernon Hills, IL 60061 • 1-800-SCOTSMAN • Fax: (847) 913-9844
 Visit our website at: www.scotsman-ice.com • E-mail: customer.service@scotsman-ice.com

Scotsman®