

## Infusion Series™ iMIX Dispenser with 4 and 5 Hoppers

ITEM#

PROJECT

DATE



**iMIX-4**

Dimensions: 32.8"H x 19.3" W x 24" D  
(83.2cm H x 59.5cm W x 61cm D)



**iMIX-5**

Dimensions: 32.8"H x 19.3" W x 24" D  
(83.2cm H x 59.5cm W x 61cm D)

### Features

#### iMIX Dispensers with 4 and 5 Hoppers

- Capacity: iMIX-4: Four, 8-pound (3.6 kg) hoppers  
iMIX-5: Five, 8-pound (3.6 kg) hoppers
- Large, lighted front graphics for merchandising.
- 7-gallon hot water tank to meet peak serving times.
- Cup clearance at 7.25" (18.4 cm) to accommodate popular cup sizes (adjustable to 8.12" (20.6 cm)).
- Key service components easily accessible through front and top.
- High speed, heavy-duty whipper for complete product mixing.
- Front of machine access to tank drain, dump valves, auger and whipper motors and control board for easy service.
- Key lock on the door prevents tampering.
- Contemporary styling for striking visual statement.
- Low product detection system alerts audibly and with message on display when hoppers are low.
- New digital technology adds night mode to prevent pilferage.
- Alphanumeric display communicates advertising messages, machine status and technical support contact information.
- Spring-loaded, all metal auger drive system for easy hopper installation.
- Machine can be ordered with left or right-hinged doors to support side by side placement.
- Front of machine set up and calibration.
- Auger motors with RPM feedback monitoring assure consistent flavors and profits by controlling powder dosing.

For current specification sheets and other information, go to [www.bunn.com](http://www.bunn.com).

### Related Products

#### Easy Clear® EQ-11-TL

Product No. : 30344.1001  
Dimensions:  
15<sup>7</sup>/<sub>8</sub>" H x 3<sup>3</sup>/<sub>8</sub>" W x 4<sup>17</sup>/<sub>32</sub>" D  
40.3cm H x 9.2cm W x 11.5cm D

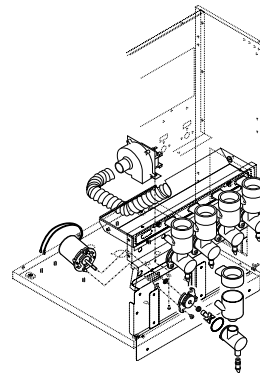
#### Easy Clear® ED-11-TL

Product No. : 30244.1001  
Dimensions:  
14<sup>3</sup>/<sub>16</sub>" H x 5<sup>1</sup>/<sub>16</sub>" W x 5<sup>1</sup>/<sub>16</sub>" D  
36cm H x 12.9cm W x 12.9cm D



#### Features deluxe whipper chambers:

1. Robust whipper to ensure full flavor yield.
2. Specially designed self cleaning mixing chamber.
3. Exhaust fan to siphon off moisture that can cause powder buildup.
4. Hot water dispense for easy clean-out.
5. Quick disconnecting parts for thorough sanitizing.



Model	Agency Listing	International Model	Agency Listing
iMIX-4	NSF, UL	No International Model	
iMIX-5	NSF, UL		

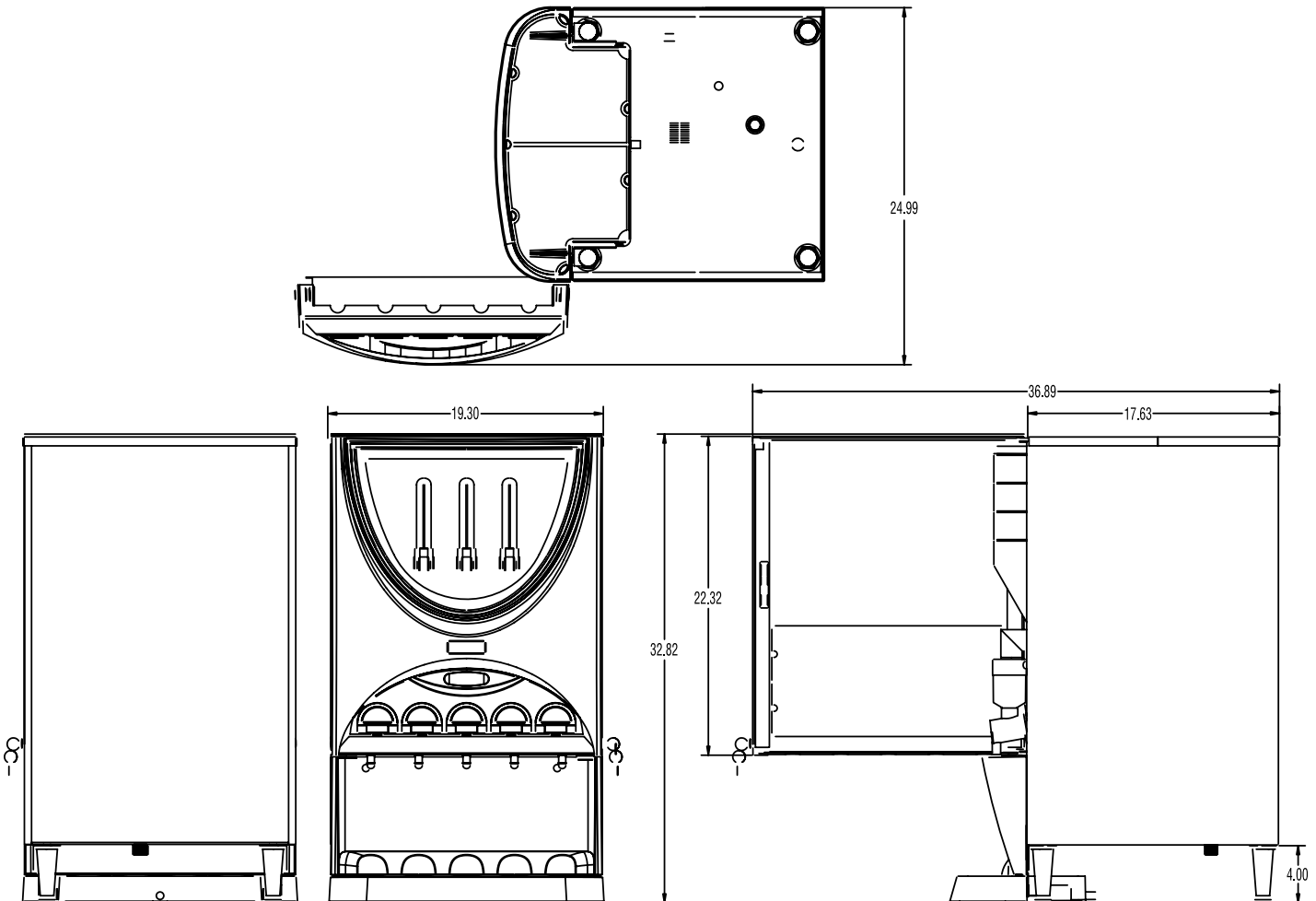
## Dimensions & Specifications

Model	Product #	Volts	Amps	Watts	Capacity	Cu. Ft.	Shipping Weight	Cord Attached
iMIX-4 BLK	37000.0004	120	15	1800	107-5oz. cups/hr	16.37	132 lbs. (59.87 Kg)	Yes*
iMIX-4 BLK**	37000.0003	120	15	1800	107-5oz. cups/hr	16.37	132 lbs. (59.87 Kg)	Yes*
iMIX-5 BLK	37000.0000	120	15	1800	107-5oz. cups/hr	16.37	135 lbs (61.23 Kg)	Yes*
iMIX-5 BLK**	37000.0001	120	15	1800	107-5oz. cups/hr	16.37	135 lbs (61.23 Kg)	Yes*

\*Power cord (NEMA 5-15P) 15 Amp-120V machine only. \*\*Special order models available with door hinges on right side.

Electrical: 120V model requires 2-wires plus ground service rated 120V, single phase, 60 Hz.

Plumbing: 20-100 psi (138-690 kPa) from a 1/4" (6.4 mm) or larger supply line. A shut-off valve should be installed in the line before the unit. Install a regulator in line when pressure is greater than 90 psi to reduce it to 50 psi. Supplied with 1/4" (6.4 mm) male flare fitting.



BUNN Corporation - 1400 Stevenson Drive Springfield, Illinois 62703 • 800-637-8606 • 217-529-6601 • Fax 217-529-6644 • www.bunn.com

BUNN® practices continuous product research and improvement. We reserve the right to change specifications and product design without notice. Such revisions do not entitle the buyer to corresponding changes, improvements, additions or replacements for previously purchased equipment.

All dimensions shown in inches. Bunn Corporation owns all copyrights relating to materials in this publication. Please contact Bunn Corporation to request permission to reproduce any portion of this publication.