



ITEM #: _____ QTY: _____
 MODEL #: _____
 PROJECT NAME: _____

010518

3601 S. Banker St. Effingham, IL 62401 • P.O. BOX 609 • Ph: (888) 431-2667 • Fax: (800) 433-2667

"ESSK8" OPTIONAL LOWER SHELVES - STAINLESS STEEL 
 18GA, FOR MODEL: ST4-GSK, ST6-GSK, ST4R-GSK, ST6R-GSK, JNS, HNS, DNS

FEATURES:

- ECONOMY SERIES OPTIONAL UNDERSHELF 18 GAUGE, TYPE 400 STAINLESS STEEL, #4 POLISH, SATIN FINISH
- FOR SERIES ST4-SSK, ST6-SSK, ST4R-SSK, ST6R-SSK, SNS, TNS, AND DSS TABLES
- KNOCKDOWN SETUP
- ALL MODELS ARE NSF CERTIFIED

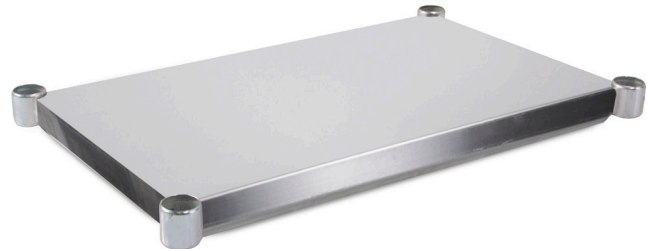


CONSTRUCTION:

- EXPOSED WELDS ARE POLISHED TO MATCH ADJACENT SURFACES

MATERIAL:

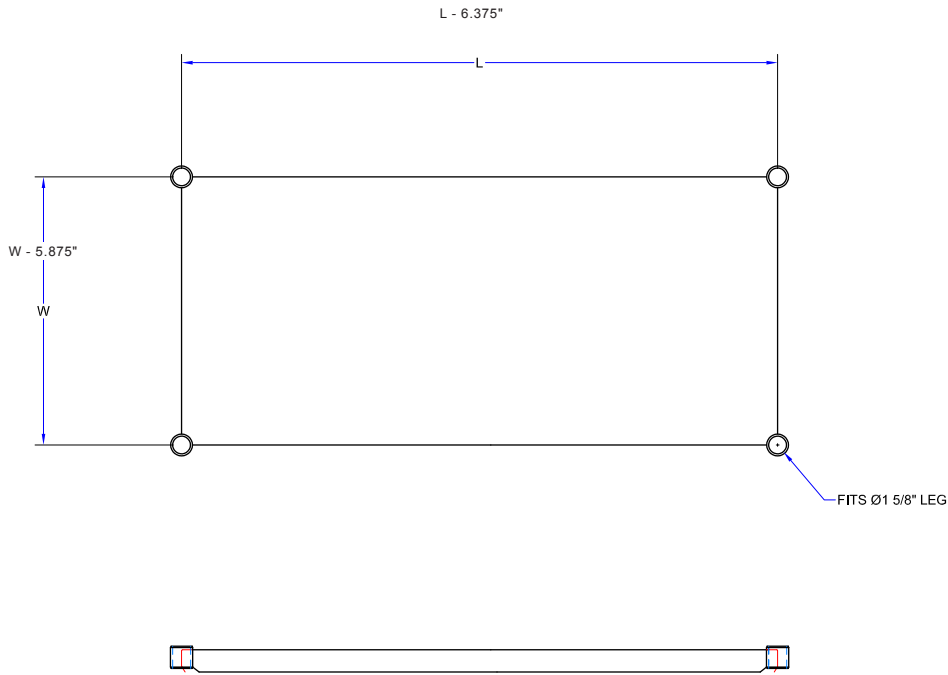
- SHELF: 18 GAUGE TYPE 400 #4 POLISH, SATIN FINISH



OPTIONAL LOWER SHELVES - STAINLESS STEEL 18GA

L	24" WIDE	QTY	30" WIDE	QTY
30"	ESSK8-2430		ESSK8-3030	
36"	ESSK8-2436		ESSK8-3036	
48"	ESSK8-2448		ESSK8-3048	
60"	ESSK8-2460		ESSK8-3060	
72"	ESSK8-2472		ESSK8-3072	
84"	ESSK8-2484		ESSK8-3084	
96"	ESSK8-2496		ESSK8-3096	

DETAILED SPECIFICATIONS



OPTIONAL LOWER SHELVES - STAINLESS STEEL 18GA

L	24" WIDE	WEIGHT (LBS)	30" WIDE	WEIGHT (LBS)
30"	ESSK8-2430	11	ESSK8-3030	13
36"	ESSK8-2436	13	ESSK8-3036	15
48"	ESSK8-2448	16	ESSK8-3048	22
60"	ESSK8-2460	20	ESSK8-3060	26
72"	ESSK8-2472	29	ESSK8-3072	31
84"	ESSK8-2484	31	ESSK8-3084	37
96"	ESSK8-2496	36	ESSK8-3096	43

SOME UNITS SHIP UNASSEMBLED FOR REDUCED SHIPPING COST. ALL DIMENSIONS ARE TYPICAL. TOLERANCE +/- .500"
 John Boos & Co. is constantly engaged in a program of improving products and therefore reserves the right to change specifications without prior notice.



3601 S. Banker St. • Effingham, IL 62401 • PO BOX 609 • quotes@johnboos.com

www.johnboos.com