

Liquid Coffee Ambient Dispenser with 2 heads

ITEM#

PROJECT

DATE

Features

Liquid Coffee Ambient Dispenser

- Attractive appearance and narrow 12" (30.5 cm) width.
- Dispense over 125 - 5 oz. (148 ml) cups per hour with a 120 volt, 15 amp electrical connection or over 500 - 5 oz. (148 ml) cups per hour with a 240 volt / 30 amp electrical connection.
- Accommodates all ½ gallon (1.9 liter) and most 1 gallon (3.8 liter) bag-in-box (BIB) containers.
- Insulated product cabinet assures maximum product life.
- Refill or rinse LED lights alert the operator when more concentrate or cleaning is needed.
- Global multi-volt design is easily converted to ratings from 100 to 240 volts (50-60 hertz) eliminating the need to inventory multiple electrical configurations.
- FlavorGard™ technology continuously monitors extract-to-water ratio and assures flavor consistency.
- Easy-to-program one touch portion control model is available for self-serve applications.
- Sanitation listed by ETL to NSF Standard 18 and safety listed by ETL to UL Standard (UL 197) and CSA Standard (C22.2 No. 109 - model LCR-2C)



Model LCA-2*

Dimensions: 30" H x 12.2" W x 24.9" D
(76.2 cm H x 31 cm W x 63.3 cm D)



Model LCA-2, PC*

LCA is also available with portion control

For current specification sheets and other information, go to www.bunn.com.

* International models may vary in appearance.

Related Products

Easy Clear® EQ-11-TL

Product No. : 30344.1001

Dimensions:

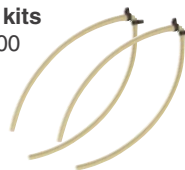
15⁷/₈" H x 3⁵/₈" W x 4¹⁷/₃₂" D

Use with 1.8 oz/sec. flow rate.



1/8" Replacement tube kits

Product No. : 34728.1000



Scholle BIB connector

Product No. : 35057.0000



3/16" Replacement tube kits

Product No. : 34727.1000



LiquiBox QC/D II

BIB connector

Product No. : 35055.0000

Easy Clear® EQ-21-TL,TL

Product No. : 30325.1000

Product No. : 30331.1001 (x2)

Use with 2.5 oz/sec. flow rate.



50ml Graduated Cylinder Kit

Product No. : 34843.1000

For use in calibration of pumps.



Model	Agency Listing	International Model	Agency Listing
LCA-2	ETL	LCA-2A	CE

Patents Apply

5/04

A6.1

Dimensions & Specifications

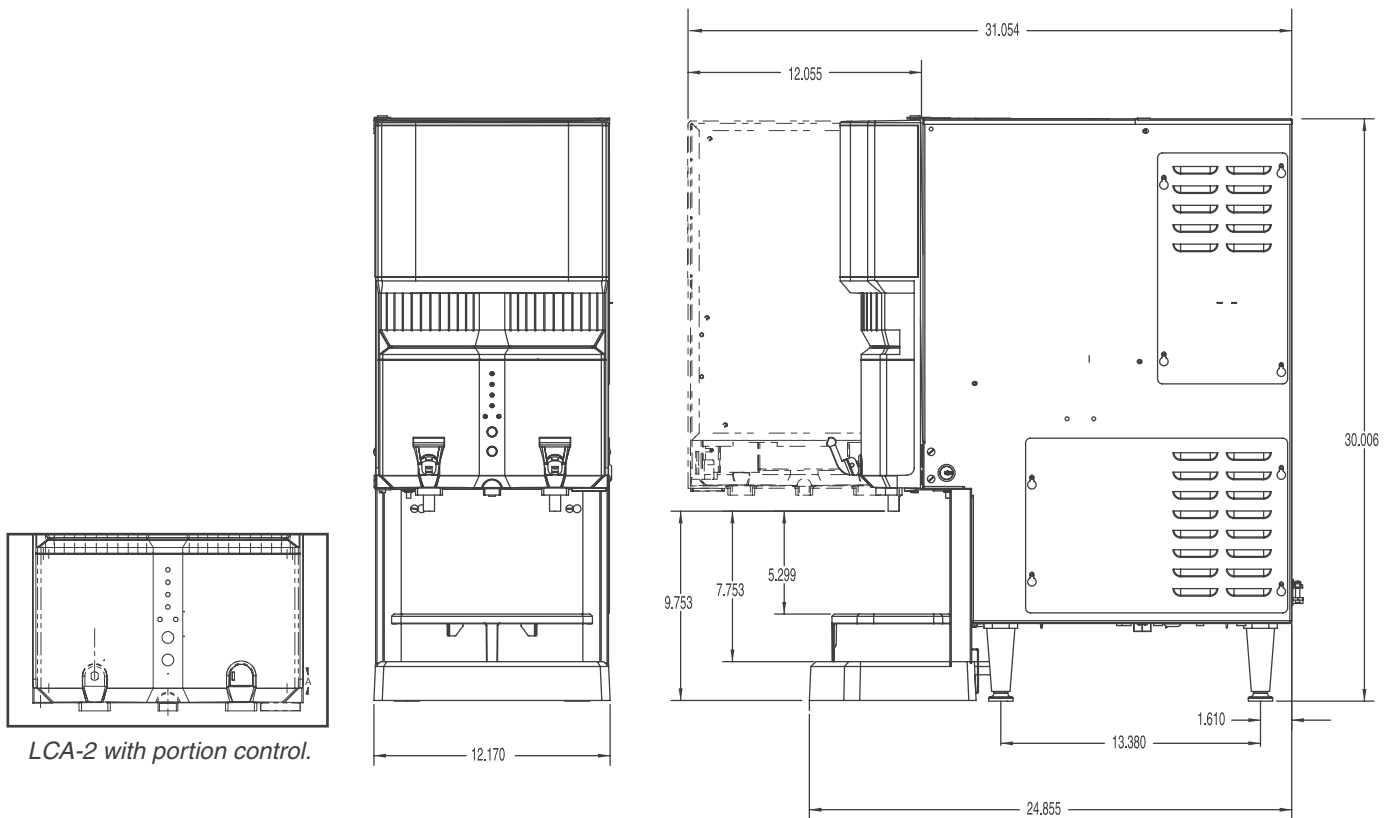
Model	Product Number	Dispense Rate/Sec.		Connector Type	Volts	Amps	Heater Watts	Capacity**	Cubic Feet	Shipping Weight	Cord Attached
		1.8 oz.	2.5 oz.*								
Product Ratios											
LCA-2	34400.0001†	45:1-100:1	65:1-100:1	Scholle 1910LX	120	14.2	1500	125 cups/hr.	9.8	83 lbs. (37.2 kg)	Yes***
LCA-2	34400.0002†	25:1-45:1	25:1-65:1	Scholle 1910LX	120	14.2	1500	125 cups/hr.	9.8	83 lbs. (37.2 kg)	Yes***
LCA-2	34400.0003†	45:1-100:1	65:1-100:1	LiquiBox QC/D II	120	14.2	1500	125 cups/hr.	9.8	83 lbs. (37.2 kg)	Yes***
LCA-2	34400.0004†	25:1-45:1	25:1-65:1	LiquiBox QC/D II	120	14.2	1500	125 cups/hr.	9.8	83 lbs. (37.2 kg)	Yes***
†All models can be changed to these electrical configurations.					208	25.8	4500	385 cups/hr.	9.8	83 lbs. (37.2 kg)	No
					240	25.8	6000	512 cups/hr.	9.8	83 lbs. (37.2 kg)	No
LCA-2, PC	36500.0001†	45:1-100:1	65:1-100:1	Scholle 1910LX	120	14.2	1500	125 cups/hr.	9.8	83 lbs. (37.2 kg)	Yes***
LCA-2, PC	36500.0002†	25:1-45:1	25:1-65:1	Scholle 1910LX	120	14.2	1500	125 cups/hr.	9.8	83 lbs. (37.2 kg)	Yes***
LCA-2, PC	36500.0003†	45:1-100:1	65:1-100:1	LiquiBox QC/D II	120	14.2	1500	125 cups/hr.	9.8	83 lbs. (37.2 kg)	Yes***
LCA-2, PC	36500.0004†	25:1-45:1	25:1-65:1	LiquiBox QC/D II	120	14.2	1500	125 cups/hr.	9.8	83 lbs. (37.2 kg)	Yes***
†All models can be changed to these electrical configurations.					208	25.8	4500	385 cups/hr.	9.8	83 lbs. (37.2 kg)	No
					240	25.8	6000	512 cups/hr.	9.8	83 lbs. (37.2 kg)	No

*Unit shipped with dispense rate set at 1.8 oz./sec. Dispense rate increases to 2.5 oz./sec. if restrictor plug is removed.

Capacity measured with a 5 oz. cup. *Power cord (NEMA 5-15P) 15 Amp-120V machine only.

Electrical: 120V model requires 2-wires plus ground service rated 120V, single phase, 60 hz.

Plumbing: 20-90 psi (138-621 kPa) from a 3/8" (10 mm) or larger supply line. Unit requires a 2.2 gpm line flow capacity. A shut-off valve should be installed in the line before the unit. Install a regulator in line when pressure is greater than 90 psi to reduce pressure to 50 psi. Supplied with 3/8" (10 mm) male flare fitting.



BUNN Corporation - 1400 Stevenson Drive Springfield, Illinois 62703 • 800-637-8606 • 217-529-6601 • Fax 217-529-6644 • www.bunn.com

BUNN® practices continuous product research and improvement. We reserve the right to change specifications and product design without notice. Such revisions do not entitle the buyer to corresponding changes, improvements, additions or replacements for previously purchased equipment.

All dimensions shown in inches. Bunn Corporation owns all copyrights relating to materials in this publication. Please contact Bunn Corporation to request permission to reproduce any portion of this publication.