

NOR-LAKE INCORPORATED  
727 Second Street  
P.O. Box 248  
Hudson, Wisconsin 54016

800-955-5253  
715-386-2323  
800-388-5253 PARTS  
715-386-4291 FAX  
www.norlake.com



## REFRIGERATED SANDWICH UNITS



### SPECIFICATIONS: LR071, LR152, LR192, LR243, LR283, LR324

- **EXTERIOR FINISH:** The exterior front, sides, and doors are stainless steel. The bottom and back are galvanized steel.
- **INTERIOR FINISH:** Interior liner and interior door panel are smooth aluminum.
- **INSULATION:** The complete cabinet and doors are foamed-in-place with polyurethane insulation
- **HARDWARE:** Pull door handles, one adjustable gray epoxy shelf per door\*, four 6" legs.
- **ELECTRICAL:** 115/60/1, cord and plug furnished.
- **REFRIGERATION:** Base mount refrigeration system. Separate temperature controls for the pan well and storage areas. Automatic defrost in the storage area with a separate power switch in the pan well area for easy manual defrost. Refrigerated sandwich units may be built in on three sides. The air intake and exhaust is through the base of the unit. Maximum operating sound level 56-59 dBA. Operating temperature: 33°F-41°F in pan well area, 38°F in storage area.
- **APPROVALS:** UL listed.  
C-UL listed.\*\*  
UL Sanitation listed to NSF#7.\*\*



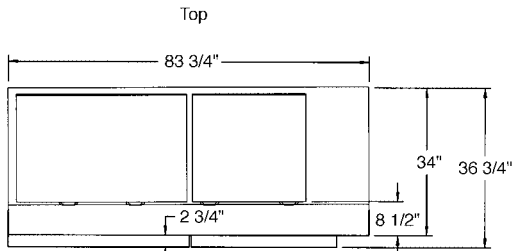
Nor-Lake, Inc.  
Registered to ISO 9001  
File No. A3204

\*Due to the unit cooler, a shelf will not fit behind right door.

REFRIGERATED SANDWICH UNITS

SPECIFICATION

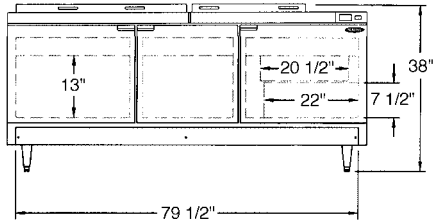
GUIDE



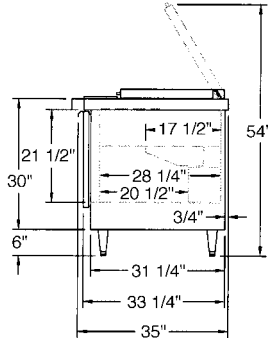
Left Door Opening  
Width: 26 1/4"  
Height: 18"

Center Door Opening  
Width: 20 1/4"  
Height: 18"

Right Door Opening  
Width: 26 1/4"  
Height: 18"



Front

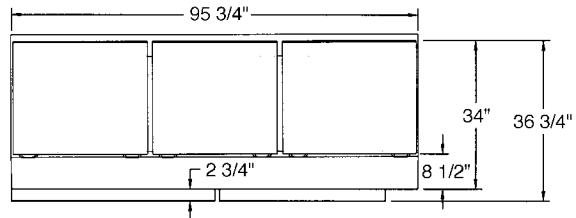


Side



**LR283**

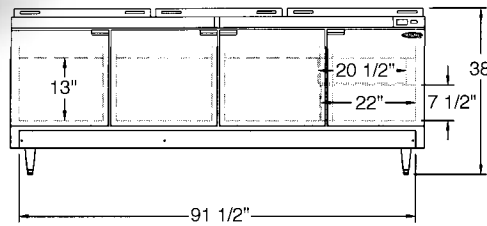
Top



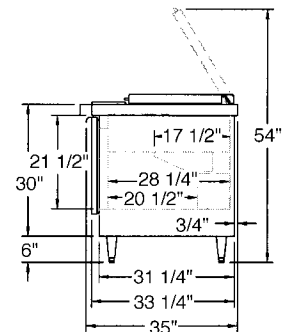
Door Openings  
Width: 20 1/4"  
Height: 18"



**LR324**



Front



Side

SMALL BUSINESS & WOMAN OWNED



Nor-Lake, Inc.  
Registered to ISO 9001  
File No. A3204

Revision Date: 2/02  
NOR-LAKE, INC. 2002  
Printed in the U.S.A.  
Part Number 095222

## STANDARD FEATURES

- Air-cooled condensing unit
- Automatic defrost in storage area
- Crumb tray
- Cutting board
- Expansion valve control
- 6" legs
- Stainless steel exterior (galv. back)
- 1 stainless steel door on LR071
- 8 pan opening (1/6 size pans) maximum on the LR071 model. Pans not included
- 2 stainless steel doors on LR152
- 18 pan opening (1/6 size pans) maximum on the LR152 model. Pans not included.
- 2 stainless steel doors on LR192
- 24 pan opening (1/6 size pans) maximum on the LR192 model. Pans not included.
- 3 stainless steel doors on LR243
- 24 pan opening (1/6 size pans) maximum on the LR243 model. Pans not included.
- 3 stainless steel doors on LR283
- 30 pan opening (1/6 size pans) maximum on the LR283 model. Pans not included.
- 4 stainless steel doors on LR324
- 36 pan opening (1/6 size pans) maximum on the LR324 model. Pans not included.

## STANDARD FEATURES

- Maximum operating sound level 56-59 dBA.
- Operating temperature: 33°F-41°F in pan well area, 38°F storage area
- Polyurethane insulation
- Stainless steel lids for pan area
- Stocked for same day shipment
- Gray epoxy shelves
- UL, C-UL & UL Sanitation listed to NSF #7\*\*
- Warranties: 90 day labor plus 1 year parts

## OPTIONAL FEATURES\*

- Casters in lieu of legs
- Door locks
- Full door pan slides
- Painted enamel front, back and sides
- Polycarbonate pans
- Stainless steel exterior (S/S back)
- Stainless steel interior
- Stainless steel pans
- Warranties: 5 year compressor plus 1 year service

\*Most options are available two weeks from receipt of order. Please contact us for specific questions.

\*\*C-UL is Underwriters Laboratories Safety Certification Mark which indicates that UL has tested the equipment to applicable CSA Standards.

\*\*UL Sanitation is Underwriters Laboratories Sanitation Mark which indicates that UL has tested the equipment to applicable NSF Standards.

## SPECIFICATIONS

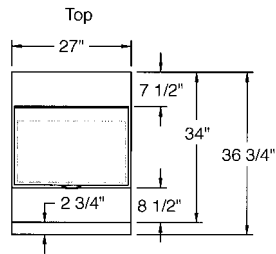
	<b>LR071</b>	<b>LR152</b>	<b>LR192</b>	<b>LR243</b>	<b>LR283</b>	<b>LR324</b>
Crated Height	43-1/2"	43-1/2"	43-1/2"	43-1/2"	43-1/2"	43-1/2"
Crated Width	32"	53"	65"	77"	89"	101"
Crated Depth	40-1/2"	40-1/2"	40-1/2"	40-1/2"	40-1/2"	40-1/2"
Crated Weight (lbs.)	200	410	440	460	470	480
Interior Height	22-7/8"	13"	13"	13"	13"	13"
Interior Width	23"	43-1/2"	55-1/2"	67-1/2"	79-1/2"	91-1/2"
Interior Depth	28-1/4"	28-1/4"	28-1/4"	28-1/4"	28-1/4"	28-1/4"
Overall Height	38"	38"	38"	38"	38"	38"
Overall Width	27"	47-3/4"	59-3/4"	71-3/4"	83-3/4"	95-3/4"
Overall Depth (with crumb tray)	35"(36-3/4")	35"(36-3/4")	35"(36-3/4")	35"(36-3/4")	35"(36-3/4")	35"(36-3/4")
Gross Cubage (ft. <sup>3</sup> )	7	15	19	24	28	32
Shelf Area (sq. ft.) Incl. bottom	8.5	11.4	14.9	20.4	23.9	29.5
Number of Shelves	1	1*	1*	2*	2*	3*
Number of Casters	4 optional	4 optional	4 optional	4 optional	4 optional	4 optional
Number of Legs	4	4	4	4	4	4
Condensing Unit Size	1/7	1/4	1/4	1/3	1/3	1/3
Refrigerant	R-134a	R-22	R-22	R-22	R-22	R-22
Electrical Characteristics	115/60/1	115/60/1	115/60/1	115/60/1	115/60/1	115/60/1
Cord & Plug Furnished	Yes	Yes	Yes	Yes	Yes	Yes
Maximum Fuse Size	15	15	15	15	15	15
NEMA Plug Configuration	5-15P	5-15P	5-15P	5-15P	5-15P	5-15P
Total Amp Draw	4.1	9.0	9.1	9.9	9.9	10.1

\* Due to the unit cooler, a shelf will not fit behind the right door.

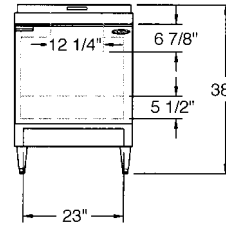
Specifications subject to change without notice.



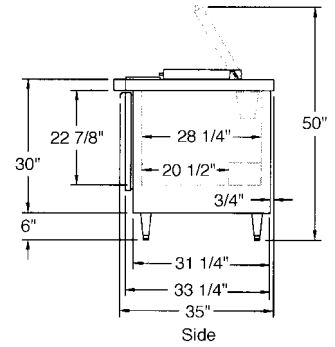
**LR071**



Door Opening  
Width: 22 1/4"  
Height: 18"



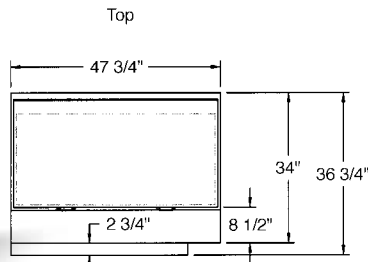
Front



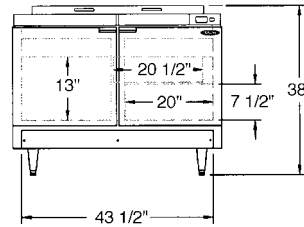
Side



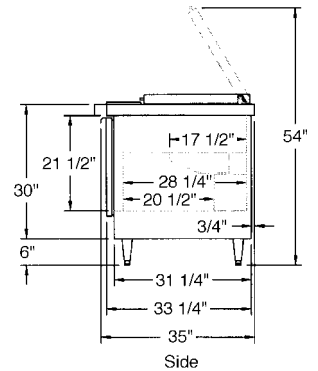
**LR152**



Door Openings  
Width: 20 1/4"  
Height: 18"



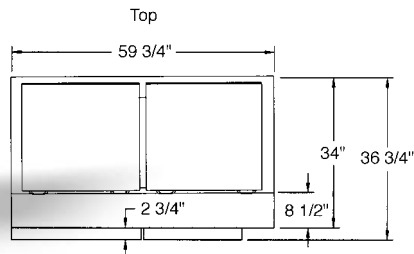
Front



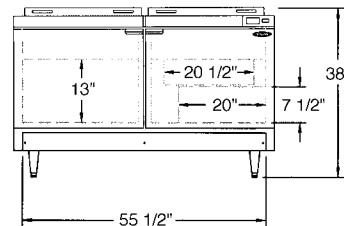
Side



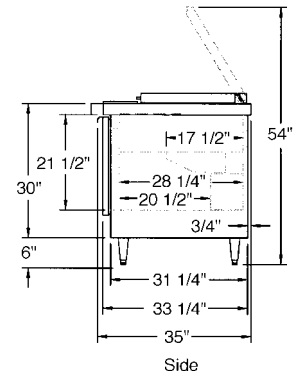
**LR192**



Door Openings  
Width: 26 1/4"  
Height: 18"



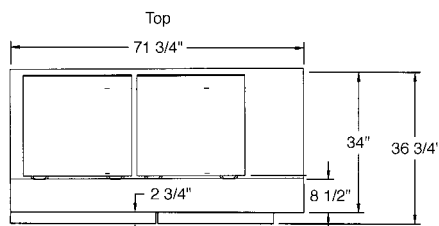
Front



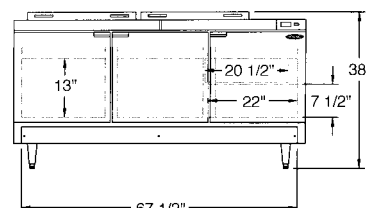
Side



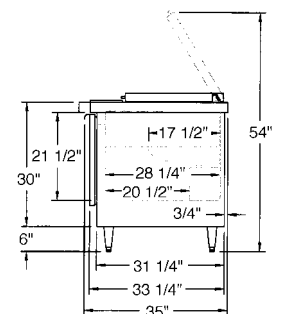
**LR243**



Door Openings  
Width: 20 1/4"  
Height: 18"



Front



Side