

# SCOTSMAN

TOUCHFREE® AIR COOLED FLAKE ICE MAKER / DISPENSER

**New!**

## MDT3F12

### 24 HOUR ICE PRODUCTION

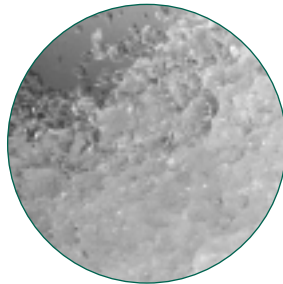
Based on Air/Water Temperatures	Air-Cooled	
	70°/50° lbs./kg.	90°/70° lbs./kg.
MDT3F12	392/178	294/133

### YOU'LL VALUE OUR IMPROVED TOUCHFREE® ICE MAKER / WATER DISPENSERS

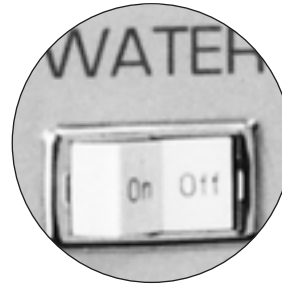
- Sleek, European design with attractive rounded corners and informative instruction labels.
- Up to 25% less fan noise allows installation of the unit in the quietest hallways.
- Improved dispensing with easier access and room for most containers.
- TouchFree actuation provides convenient one-hand operations and eliminates the risk of cross contamination.
- Flexible utility location.
- Makes and dispenses flaked ice

### WARRANTY *See your dealer for complete warranty details.*

- 2 years parts on all components.
- 2 years labor on all components.
- 5 years parts on compressor.



**FLAKE ICE**  
Chewable and slow-melting.  
Helps to cool drinks rapidly and  
to stay cool longer.



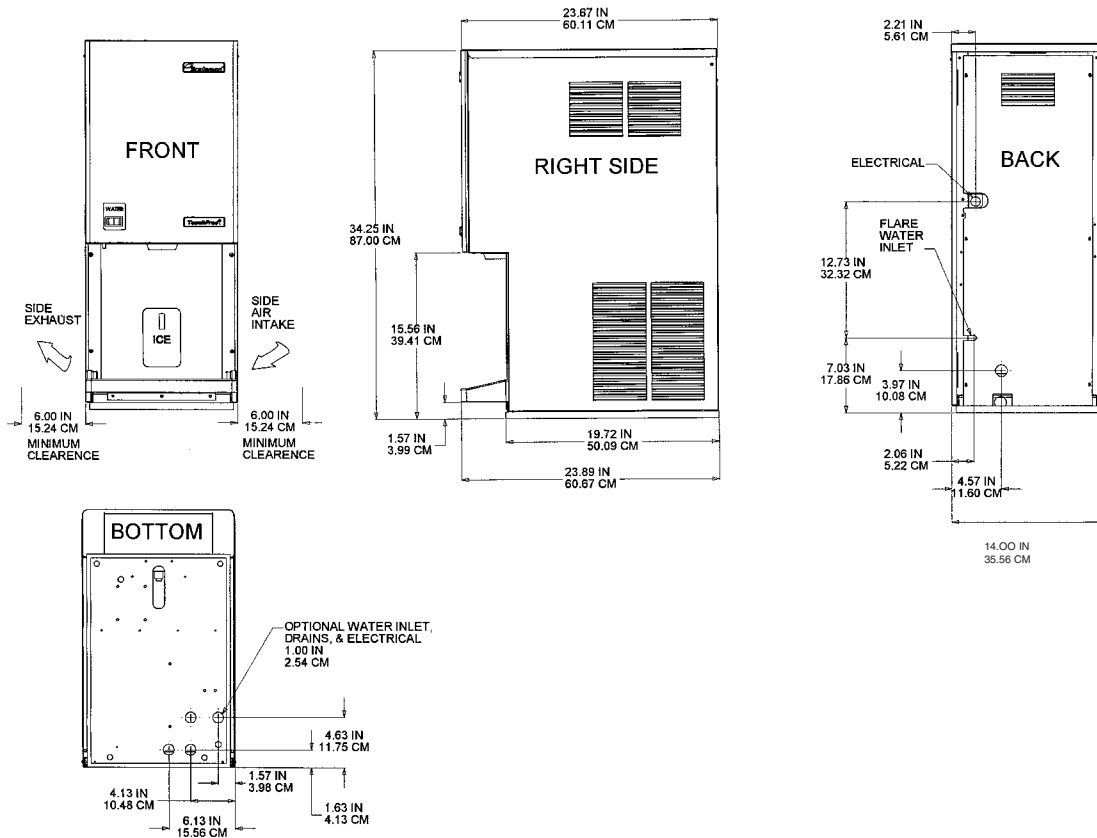
**WATER/ICE SELECTION SWITCH**  
Select ice only or ice  
and water at the touch  
of a switch, conveniently  
located on front panel.

This product qualifies for the following listings:



 **Scotsman®**

# Ice Maker/Dispenser Specifications



INSTALLATION NOTE: Allow 6" minimum space at sides and back for ventilation and utility connections.

All models: Dimensions: W x D x H Unit: 14" x 23 3/4" x 34 1/4" Shipping Carton: 17" x 26" x 39 3/4"

Model Number	Condenser Unit	Bin Cap. lbs./kg.	Basic Electrical Volts/Hz/Phase	Max. Fuse Size or HACR Circuit Breaker	Comp. HP	Circuit Wires	Min. Circuit Ampacity	Shipping Weight lbs./kg.	Power Consumption KWH/100 lbs. 90°F/70° F	Water Usage Gallons/100 lbs.	
										Potable 90°F/70° F	Condenser 90°F/70° F
MDT3F12A-1A	AIR	12/6	115/60/1	20	1/2	2	14.9	155/70	5.6	12	-

All units with stainless steel finish.  
 Refrigerant: R-134A.

OPTIONS:  
 KWB4: Wall mounting kit.

### IMPORTANT OPERATING REQUIREMENTS:

	Minimum	Maximum
Air Temperatures	50°F (10°C)	100°F (37.7°C)
Water Temperatures	40°F (4.4°C)	100°F (37.7°C)
Water Pressures	20 PSIG	120 PSIG
Electrical Voltage	-5%	+10%

### ICE VENDING CAPACITY

PEAK VENDS PER HOUR\*

Model	Bin Storage lb./kg.	1 Hour Recovery Cap. lb./kg.	Number of Vends Per Hour from Full Bin + Recovery = Total Vends											
			2 fl. oz. Bin	2 fl. oz. Recovery	Total 2 fl. oz. Vends	4 fl. oz. Bin	4 fl. oz. Recovery	Total 4 fl. oz. Vends	6 fl. oz. Bin	6 fl. oz. Recovery	Total 6 fl. oz. Vends	8 fl. oz. Bin	8 fl. oz. Recovery	Total 8 fl. oz. Vends
MDT3F12A	12/5	16/7	192	261	= 453	96	131	= 227	64	87	= 151	48	65	= 113

1 lb. apx. = 32 fl. oz.

\*Based on 70° Air and 50° Water Temperatures.

Scotsman's ice machines are not designed for outdoor installations.  
 Machine requires voltage indicated on rating name plate. Failures caused by improper voltage are not considered factory defects. Extended periods of operation at temperatures exceeding limitations constitutes misuse under the terms of Scotsman Manufacturer's Limited Warranty, resulting in a loss of warranty coverage. Specifications and design are subject to change without notice.  
**Consult Your Local SCOTSMAN Representative At:**

**YOU'LL VALUE THE DIFFERENCE™**

775 Corporate Woods Parkway • Vernon Hills, IL 60061 • 1-800-SCOTSMAN • Fax: (847) 913-9844  
 Visit our website at: [www.scotsman-ice.com](http://www.scotsman-ice.com) • E-mail: [customer.service@scotsman-ice.com](mailto:customer.service@scotsman-ice.com)

