

SCOTSMAN

TOUCHFREE® AIR COOLED FLAKE ICE MAKER / DISPENSER

New!

MDT4F12

24 HOUR ICE PRODUCTION

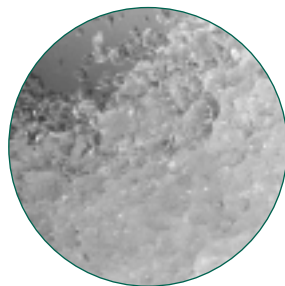
Based on Air/Water Temperatures	Air-Cooled	
	70°/50° lbs./kg.	90°/70° lbs./kg.
MDT4F12	453/205	351/159

YOU'LL VALUE OUR IMPROVED TOUCHFREE® ICE MAKER / WATER DISPENSERS

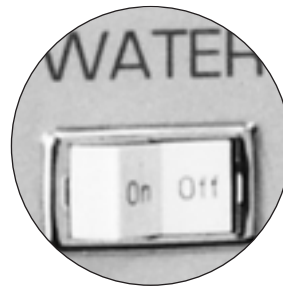
- Sleek, European design with attractive rounded corners and informative instruction labels.
- Up to 25% less fan noise allows installation of the unit in the quietest hallways.
- Improved dispensing with easier access and room for most containers.
- TouchFree actuation provides convenient one-hand operations and eliminates the risk of cross contamination.
- Flexible utility location.
- Makes and dispenses flaked ice

WARRANTY *See your dealer for complete warranty details.*

- 2 years parts on all components.
- 2 years labor on all components.
- 5 years parts on compressor.



FLAKE ICE
Chewable and slow-melting.
Helps to cool drinks rapidly and
to stay cool longer.



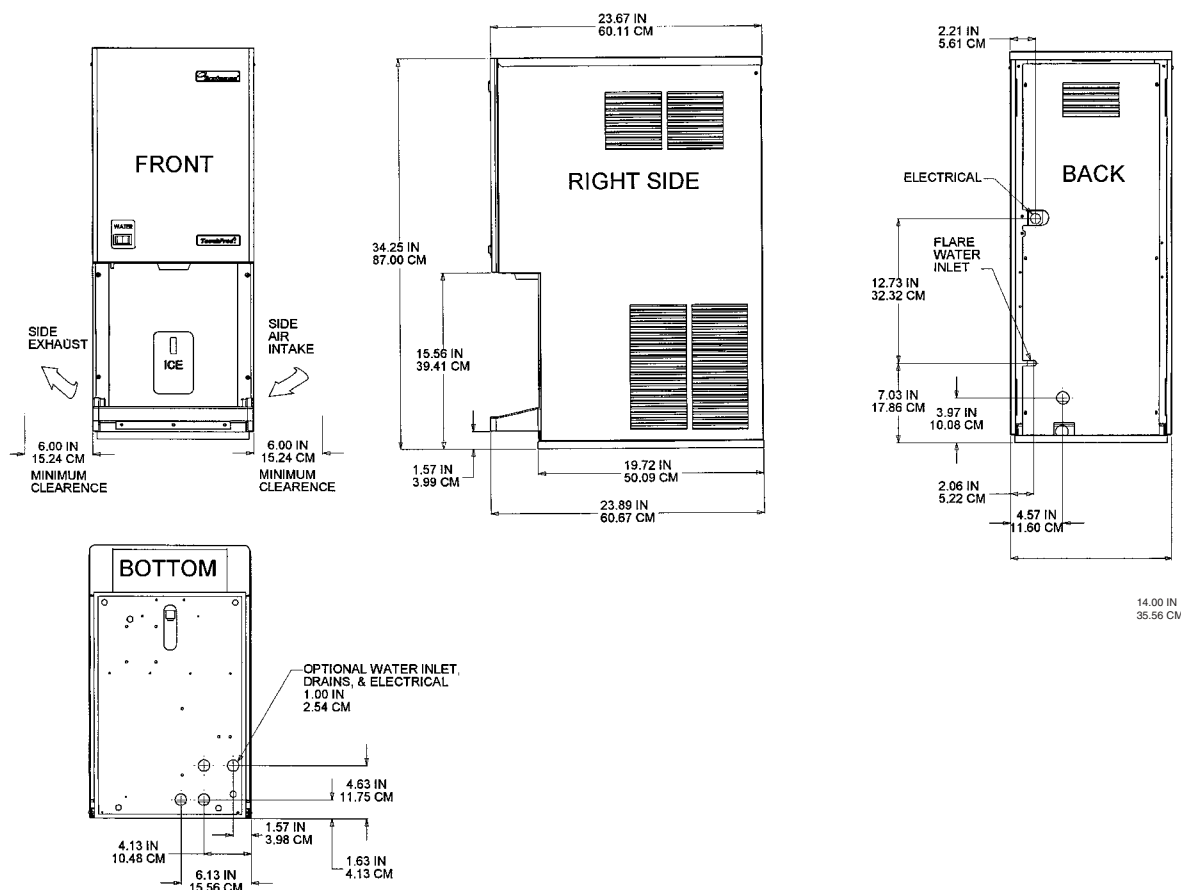
WATER/ICE SELECTION SWITCH
Select ice only or ice
and water at the touch
of a switch, conveniently
located on front panel.

This product qualifies for the following listings:



 **Scotsman®**

Ice Maker/Dispenser Specifications



INSTALLATION NOTE: Allow 6" minimum space at sides and back for ventilation and utility connections.

All models: Dimensions W x D x H: Unit: 14" x 23³/₄" x 34¹/₄" Shipping Carton: 17" x 26" x 39³/₄"

Model Number	Condenser Unit	Bin Capacity lbs./kg.	Basic Electrical Volts/Hz/Phase	Max. Fuse Size or HACR Circuit Breaker	Comp. HP	Circuit Wires	Min. Circuit Ampacity	Shipping Weight lbs./kg.	Power Consumption KWH/100 lbs. 90°/70°F	Water Usage Gallons/100 lbs. 90°/70°F	
										Potable	Condenser
MDT4F12A-1A	AIR	12/6	115/60/1	20	1/2	2	14.9	155/70	5.6	12	-

All units with Stainless Steel finish.
 Refrigerant - R-134A

OPTIONS:
 KWB4: Wall mounting kit.

IMPORTANT OPERATING REQUIREMENTS:

	Minimum	Maximum
Air Temperatures	50°F (10°C)	100°F (37.7°C)
Water Temperatures	40°F (4.4°C)	100°F (37.7°C)
Water Pressures	20 PSIG	120 PSIG
Electrical Voltage	-5%	+10%

ICE VENDING CAPACITY

PEAK VENDS PER HOUR*

Model	Bin Storage lb./kg.	1 Hour Recovery Cap. lb./kg.	Number of Vends Per Hour from Full Bin + Recovery = Total Vends											
			2 fl. oz. Bin	2 fl. oz. Recovery	Total 2 fl. oz. Vends	4 fl. oz. Bin	4 fl. oz. Recovery	Total 4 fl. oz. Vends	6 fl. oz. Bin	6 fl. oz. Recovery	Total 6 fl. oz. Vends	8 fl. oz. Bin	8 fl. oz. Recovery	Total 8 fl. oz. Vends
MDT4F12A	12/5	19/9	192	302	494	96	151	247	64	101	165	48	76	124

1 lb. apx. = 32 fl. oz.

*Based on 70° Air and 50° Water Temperatures.

Scotsman's ice machines are not designed for outdoor installations.
 Machine requires voltage indicated on rating name plate. Failures caused by improper voltage are not considered factory defects. Extended periods of operation at temperatures exceeding limitations constitutes misuse under the terms of Scotsman Manufacturer's Limited Warranty, resulting in a loss of warranty coverage. Specifications and design are subject to change without notice.

Consult Your Local SCOTSMAN Representative At:

YOU'LL VALUE THE DIFFERENCE™

775 Corporate Woods Parkway • Vernon Hills, IL 60061 • 1-800-SCOTSMAN • Fax: (847) 913-9844
 Visit our website at: www.scotsman-ice.com • E-mail: customer.service@scotsman-ice.com

