



ITEM # _____	SIS # _____
MODEL # _____	
PROJECT NAME _____	

AIA # _____



MGM-25-2



McCall Refrigeration specification sheets are available online @ www.mccallrefrigeration.com

MGM REVOLVING MERCHANDISERS

Model MGM-25-2 (2 door)

Model MGM-25-3 (3 door)

Show off your best products with this rugged performer.

The McCall MGM Revolving Merchandiser is an attractive showcase and compelling focal point for products ranging from desserts to wine. Place the completely self-contained and mobile MGM anywhere on your floor and watch impulse purchases follow!

Standard Features

- Oversized, self-contained refrigeration system
- 1/2 HP compressor
- R-134a refrigerant
- Automatic condensate evaporator
- Decorative crown
- Full insulated evaporator coil housing
- Separate on/off switch for lamps and rotation units
- Attached cord and plug
- Hand rubbed light honey oak wood exterior finish
- Six casters offer easy mobility
- Spring loaded door hinges
- Magnetic, positive seal door gaskets
- Anodized gold frame doors and windows
- Shelves and center column revolve
- Four gold rush plated wire shelves
- Two full-length fluorescent lights with clear protective shields
- Low velocity air
- Non CFC polyurethane foam insulation
- (2) Doors Standard

Approval : _____

SPECIFICATIONS

Cabinet - A sturdy, welded, all-metal frame forms the internal structure for the 27.4 cubic foot capacity unit. The SOLID WOOD crown, trim molding, and louvered base are finished with a hand-rubbed oak finish. Louvers are removable for easy servicing of refrigeration components. Six 3 1/2 inch casters make the unit easily movable.

Door - Full-length glass doors provide 360 degrees access to the interior of the unit. Doors and windows are constructed of energy-efficient, double-paned, 1/8 inch tempered glass, framed by gold anodized aluminum. Door frames and windows have built-in, low wattage, anti-condensate

heaters. Doors have three spring loaded hinges and magnetic, positive seal gaskets.

Insulation - The unit base and crown are filled with pressure injected, closed-cell polyurethane foam.

Interior Shelves - Four round wire shelves are standard. Each shelf is supported by four brackets in the gold, mirror-filled center column. The shelves and center column rotate within the unit.

Lighting - Two full-length fluorescent lights with clear protective shields provide interior illumination for the unit. A separate on/off switch controls both the lights and rotating display.

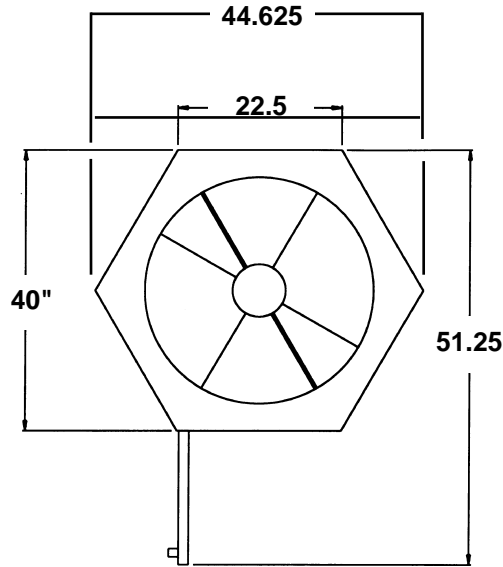
Self Contained Refrigeration - The refrigeration module contained in the base of the unit can be serviced by removing the wooden louvered panels. The oversized, self-contained, refrigeration system is designed to deliver a constant flow of humid, low velocity air in a temperature range of 38 degrees F to 42 degrees F. The unit utilized a 1/2 HP compressor and an automatic condensate evaporator, eliminating the need for drainage.

McCall Refrigeration / 81 West Holly Street / Parsons, TN 38363

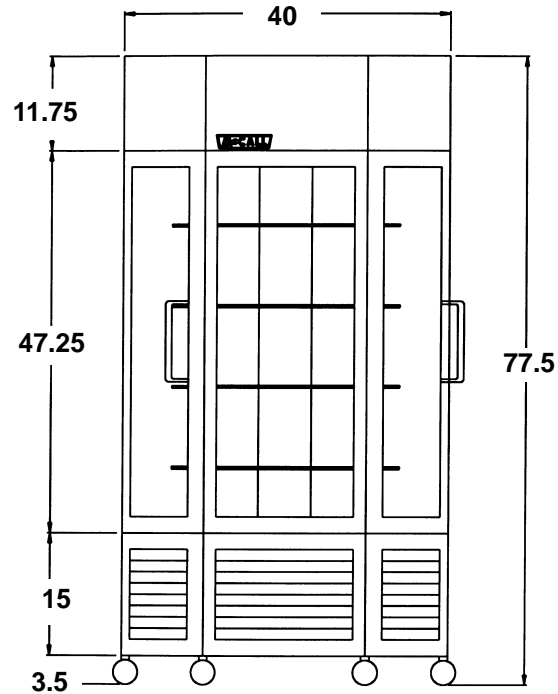
Phone (731) 847-5570 / Fax (731) 847-9012 / 1-888-REACH-IN (1-888-732-2446) / www.mccallrefrigeration.com

September 2001 / Printed in U.S.A.

TOP VIEW



FRONT VIEW



DIMENSIONS

Net Capacity:	27.4 cu.ft.
Width: across flats	34.75"
Width: across points	40"
Height: with casters	77.5"
Net Door Opening: width	15"
Net Door Opening: height	43"
Number of shelves:	4
Shipping Weight	
Model MGM-25-2	560 lbs.
MGM-25-3	560 lbs.

ELECTRICAL

Compressor HP	1/2
Voltage (60 cycle, single phase):	115
Cabinet Amperage:	3.7
Total Amperage:	16
Cord connection - ANSI	5-20P
BTU / HR	4140

Refrigeration based on 20 degrees F, evaporating temperature 90 degrees F ambient. Certain options and accessories may affect UL listing and electrical requirements. Specifications subject to change without notice.

Bidding Specifications

McCall Revolving merchandiser shall have:

Oversized, self-contained refrigeration system 1/2 HP compressor. Solid wood crown, trim molding and louvered base. Separate on/off switch for lamps and rotation units. Six casters. Anodized gold frame doors and windows. Four gold rush plated wire shelves. Rotating shelves and center column. Two full-length fluorescent lights. Low velocity air. Cord and plug attached. 115V, 60 cycle/single phase. 16 amps 27.4 cubic ft. capacity.

OPTIONS

Description

Special wood exterior (consult factory).

Extra plated shelves.
 Wine rack.

McCall Refrigeration / 81 West Holly Street / Parsons, TN 38363

Phone (731) 847-5570 / Fax (731) 847-9012 / 1-888-REACH-IN (1-888-732-2446) / www.mccallrefrigeration.com

September 2001 / Printed in U.S.A.