



# BEVERAGE-AIR

3779 Champion Blvd., Winston-Salem, NC 27105  
1-888-845-9800 Fax# 1-336-245-6453  
<http://www.Beverage-Air.com>

**CUSTOMER'S CHOICE FOR A HOT LOCATION**  
**Tested & Certified to Ambient Class of 100°F**

## 3 Year Parts/Labor Warranty Additional 2 Year Compressor Warranty

### MARKETMAX SERIES—GLASS DOOR MERCHANDISER

Used for merchandising and storage of product.

#### CABINET CONSTRUCTION

Choose from black or white exterior, white interior.

1.5" foamed-in-place CFC and HCFC-free polyurethane insulation enhances the structural strength of the cabinet and helps increase energy efficiency.

Modern, one-piece grille is easily removed for cleaning and servicing.

Double pane, lowE argon filled glass door features inside and outside panes that are tempered for added safety.

Self-closing, hinged glass door features work flow antimicrobial handle which is more aesthetically pleasing. Door provides automatic hold-open feature.

Four white epoxy coated steel shelves are standard.

#### REFRIGERATION

Whisper-quiet refrigeration system uses R404a refrigerant, which is CFC and HCFC-free for compliance with environmental safety concerns.

The cabinet features optimum refrigeration system to maintain 0°F at 86 °F ambient and -15 °F at 75 °F ambient when tested according to NSF 7 test protocol.

#### ELECTRICAL

Interior fluorescent lighting enhances product illumination. Optional LED lighting provides hidden light source for increased product visibility. LED bulbs last up to 10 times longer compared to fluorescent bulbs and renders additional energy savings due to reduced wattage load on compressor.

Units wired at factory and ready for connection to a 115/60/1 phase, 15 amp dedicated outlet. 8' long cord and plug set included.

#### ELECTRICAL CONNECTION

Units pre-wired at factory and include 8' long cord and plug set.



Item No. \_\_\_\_\_  
Quantity \_\_\_\_\_

**HINGED GLASS DOOR  
MARKETMAX  
MERCHANDISER SERIES  
MMF12**

**MODEL:  
MMF12**



**MMF12**

#### SPECIAL FEATURES

- Whisper-quiet refrigeration system
- Antimicrobial Work Flow door handle
- Optional LED lighting
- 2010 Federal Energy Compliant
- Gravity Flo kits and Can Roller options available
- Optional Novelty Baskets

Available From:



\*Note: Not all markings may apply to all model variations.

<b>Model Specified</b> _____	<b>Store#</b> _____
<b>Location</b> _____	<b>Quantity</b> _____

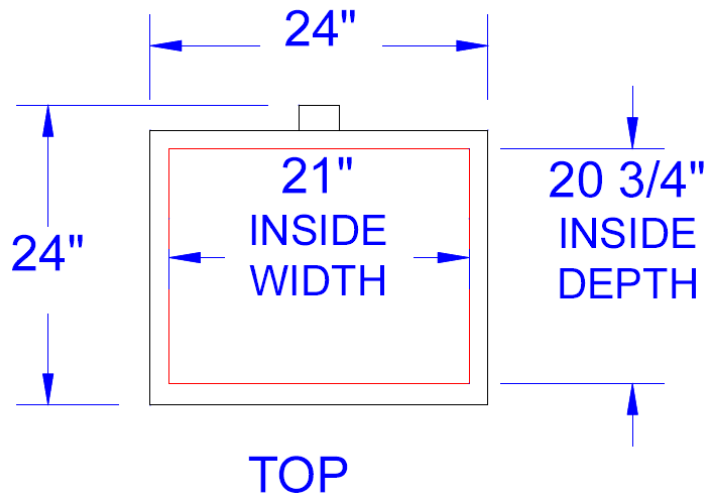
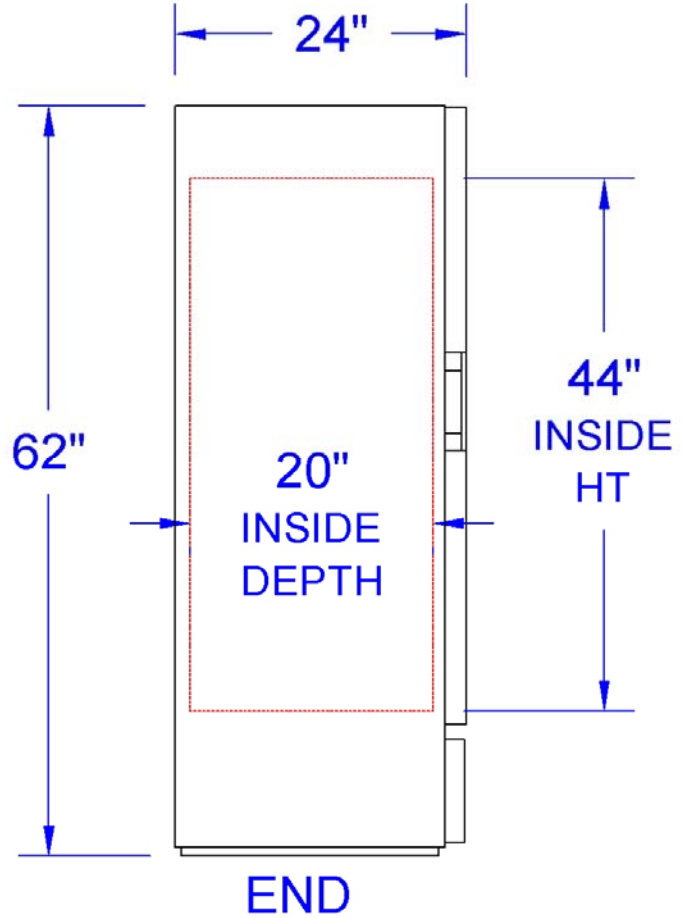


**BEVERAGE-AIR**

**PLAN VIEWS**

**MarketMax Glass Door Merchandisers**  
**Model: MMF12**

MODEL	MMF12
<b>EXTERNAL DIMENSIONAL DATA</b>	
Length Overall (inches)	24"
Length Overall (mm)	610
Depth Overall (inches)	24"
Depth Overall (mm)	610
Height Overall— (inches)	62"
Height Overall— (mm)	1575
Number of doors	1
Depth with Door Open 90 °	n/a*
<b>INTERNAL DIMENSIONAL DATA</b>	
NET Capacity (cubic ft.)	12
NET Capacity (Liters)	340
Internal Length Overall (inches)	21"
Internal Length Overall (mm)	533
Internal Depth Overall (inches)	20 3/4"
Internal Depth Overall (mm)	527
Internal Height Overall—(inches)	45 3/4"
Internal Height Overall—(mm)	1162
Number of shelves	4
<b>ELECTRICAL DATA</b>	
Full Load Amperes 115/60/1	8.6
<b>ENERGY CONSUMPTION</b>	
	N/A*
<b>REFRIGERATION DATA</b>	
Horsepower	1/3
<b>WEIGHT DATA</b>	
Gross Weight (Crated lbs)	230
Gross Weight (Crated kg)	104



**Note:** Not all markings may apply to all model variations.  
**\*N/A:** Not available at time of printing.

**BEVERAGE-AIR® CORPORATION**

3779 Champion Blvd. • Winston-Salem, NC 27105 USA • (336) 245-6400 • Fax (336) 245-6453 • (888) 845-9800 • www.beverage-air.com

Specifications are subject to change without prior notice. 06/13