



ITEM #: _____ QTY: _____
 MODEL #: _____
 PROJECT NAME: _____

071018

3601 S. Banker St. Effingham, IL 62401 • P.O. BOX 609 • Ph: (888) 431-2667 • Fax: (800) 433-2667

"PTS1" SINGLE PASS-THRU SHELVES

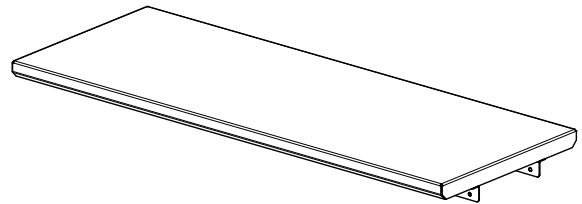
16 GAUGE

FEATURES:

- 16 GAUGE STAINLESS STEEL HAT CHANNEL ALLOWS SHELF TO BE FREELY POSITIONED IN FIELD
- INCLUDES WALL MOUNT BRACKETS TO SECURELY FASTEN SHELF TO WALL
- FURNISHED WITH STALLION EDGE TURNED DOWN 1-1/2" 90 DEGREES AND 1/2" BACK 45 DEGREES ALONG FRONT AND REAR
- ENDS ARE SQUARE TURNED DOWN 1-1/2" AT WALL

CONSTRUCTION:

- ALL TIG WELDED, EXPOSED WELDS ARE POLISHED TO MATCH ADJACENT SURFACE



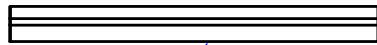
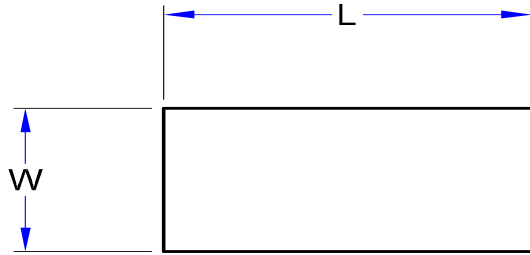
MATERIAL:

- 16 GAUGE TYPE 300 STAINLESS STEEL

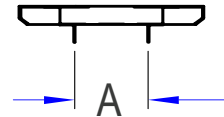
SINGLE PASS-THRU SHELVES

12" WIDTH	QTY	18" WIDTH	QTY	24" WIDTH	QTY
PTS16K-1224		PTS16K-1824		PTS16K-2424	
PTS16K-1236		PTS16K-1836		PTS16K-2436	
PTS16K-1248		PTS16K-1848		PTS16K-2448	
PTS16K-1260		PTS16K-1860		PTS16K-2460	
PTS16K-1272		PTS16K-1872		PTS16K-2472	
PTS16K-1284		PTS16K-1884		PTS16K-2484	
PTS16K-1296		PTS16K-1896		PTS16K-2496	
PTS16K-12108		PTS16K-18108		PTS16K-24108	
PTS16K-12120		PTS16K-18120		PTS16K-24120	
PTS16K-12132		PTS16K-18132		PTS16K-24132	
PTS16K-12144		PTS16K-18144		PTS16K-24144	

DETAILED SPECIFICATIONS



**PROVIDE SELF
TAPPING
SCREWS
TO ATTACH
ANGLES TO PAN**



SPECIFY WALL THICKNESS

LENGTH	12" WIDTH	A	WT (LBS)	18" WIDTH	A	WT (LBS)	24" WIDTH	A	WT (LBS)
24"	PTS16K-1224	4-3/4"	13	PTS16K-1824	10"	15.5	PTS16K-2424	7-1/2"	18
36"	PTS16K-1236	4-3/4"	19.5	PTS16K-1836	10"	23	PTS16K-2436	7-1/2"	27
48"	PTS16K-1248	4-3/4"	26	PTS16K-1848	10"	31	PTS16K-2448	7-1/2"	36
60"	PTS16K-1260	4-3/4"	32.5	PTS16K-1860	10"	38.5	PTS16K-2460	7-1/2"	45
72"	PTS16K-1272	4-3/4"	39	PTS16K-1872	10"	46	PTS16K-2472	7-1/2"	54
84"	PTS16K-1284	4-3/4"	45.5	PTS16K-1884	10"	54	PTS16K-2484	7-1/2"	63
96"	PTS16K-1296	4-3/4"	52	PTS16K-1896	10"	62	PTS16K-2496	7-1/2"	72
108"	PTS16K-12108	4-3/4"	58.5	PTS16K-18108	10"	69.5	PTS16K-24108	7-1/2"	80.5
120"	PTS16K-12120	4-3/4"	65	PTS16K-18120	10"	77	PTS16K-24120	7-1/2"	89
132"	PTS16K-12132	4-3/4"	71.5	PTS16K-18132	10"	85	PTS16K-24132	7-1/2"	98
144"	PTS16K-12144	4-3/4"	78	PTS16K-18144	10"	93	PTS16K-24144	7-1/2"	107

SOME UNITS SHIP UNASSEMBLED FOR REDUCED SHIPPING COST. ALL DIMENSIONS ARE TYPICAL. TOLERANCE +/- .500"

John Boos & Co. is constantly engaged in a program of improving products and therefore reserves the right to change specifications without prior notice.



3601 S. Banker St. • Effingham, IL 62401 • PO BOX 609 • quotes@johnboos.com

07302018



www.johnboos.com

829