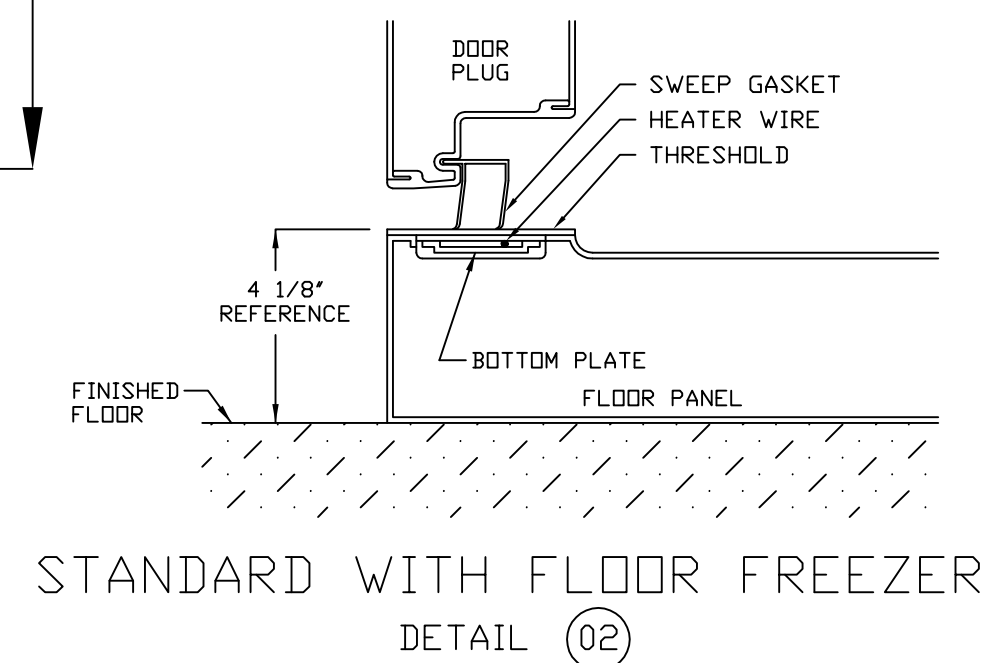
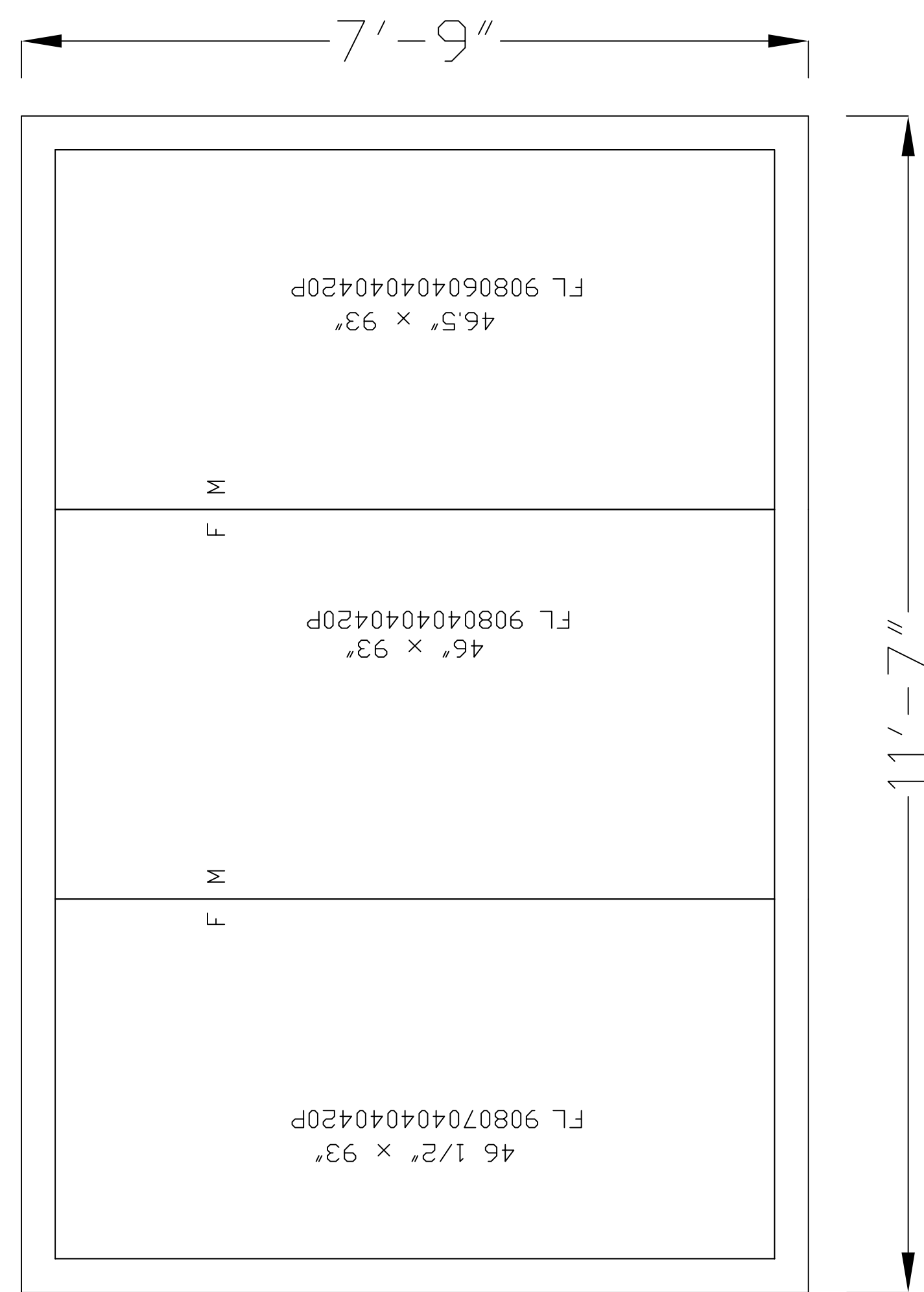


COOLER



STANDARD WITH FLOOR FREEZER
DETAIL 02

WALK-IN SPECIFICATIONS

SIZE: 7'-9" X 11'-7" X 7'-6 1/4"

PANELS:

ALL FOAMED PANELS ARE 4"

EXTERIOR FINISH:

ALL 26GA STUCCO GALVALUME
OPTIONAL FINISH: 26GA STUCCO GALVALUME

INTERIOR FINISH:

ALL 26GA STUCCO GALVALUME
OPTIONAL FINISH: 26GA STUCCO GALVALUME

FLOOR TYPE:

COOLER - .100 SMOOTH ALUMINUM

HEIGHT:

OD 7'-6 1/4" ID 6'-10 5/8"

DOORS:

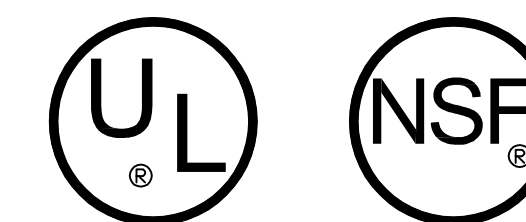
46x82.25DS 26x78 DR STD FRZ
115-60-1/1.9 AMPS

ACCESSORIES:

(NONE)

REFRIG: POLAR-PAK

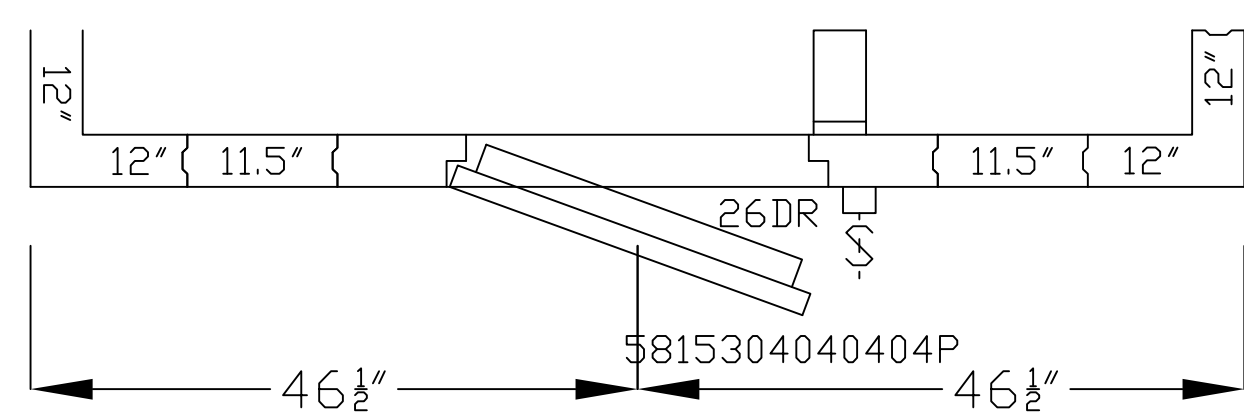
PF194T3 208/230/60-1 R404A 18.8 AMPS



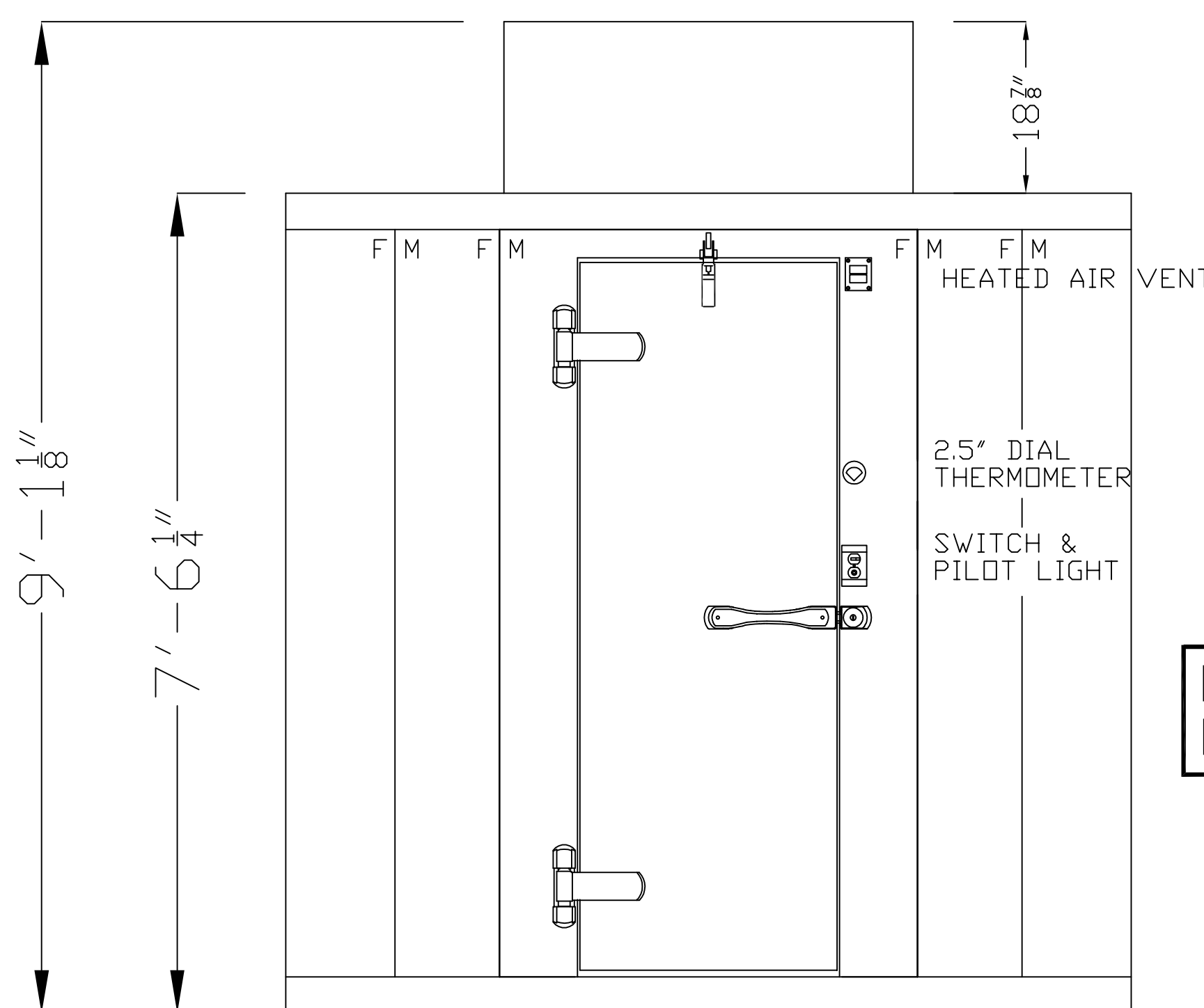
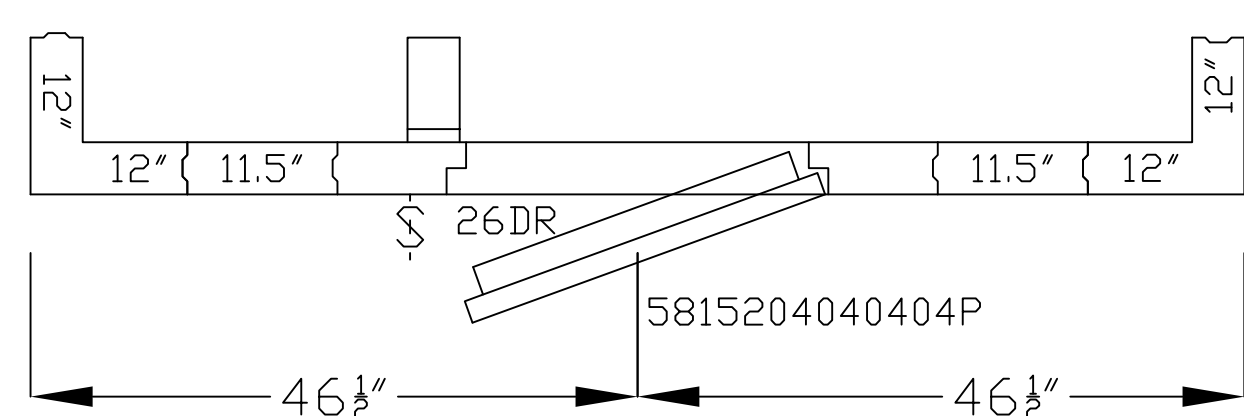
IMPORTANT NOTES:

- 1) ALLOW MINIMUM 1" CLEARANCE ALL AROUND WALK-IN.
- 2) WALK-IN CEILING IS NOT DESIGNED FOR FOOT TRAFFIC OR STORAGE.
- 3) GENERAL CONTRACTOR TO REFER TO DESIGN AND SPECIFICATIONS MANUAL FOR FLOOR DETAIL INFORMATION.
- 4) SPECIAL NOTE TO GENERAL CONTRACTOR AND SUBCONTRACTOR FOR QUARRY TILE OR CONCRETE WEARING FLOOR - THE SHEET METAL PANEL FACINGS MAY BE SUSCEPTABLE TO STAINING DUE TO EXCESSIVE MOISTURE CREATED BY THE HYDRATION OF CONCRETE TYPE MATERIALS. THEREFORE, IT IS ABSOLUTELY NECESSARY THAT EACH ROOM BE PROPERLY VENTILATED. ALSO NOTE THAT SPECIAL PRECAUTIONS MUST BE TAKEN WHEN USING MURIC ACID DUE TO EFFECTS HYDROCHLORIC ACID FUMES HAVE ON ALUMINUM AND STAINLESS STEEL MATERIALS.

OPTION A DOOR SWING



OPTION B DOOR SWING



LH SHOWN
RH OPPOSITE

DOOR ELEVATION
46x7DS 26x78 DR FRZ STD
THRESHOLD DETAIL 02

SCALE:	3/8"=1'-0"
DRAWING NO.:	QS7-812-F1
DRAWN BY:	S.B.
DATE:	06/05/10
DEALER:	
PROJECT:	7'-9" X 11'7" X 7'-6 1/4"

2915 TENNESSEE AVENUE NORTH
P.O. BOX 550
PARSONS, TN, 38363
(901) 847-6361

KOLPAK
WALK-INS