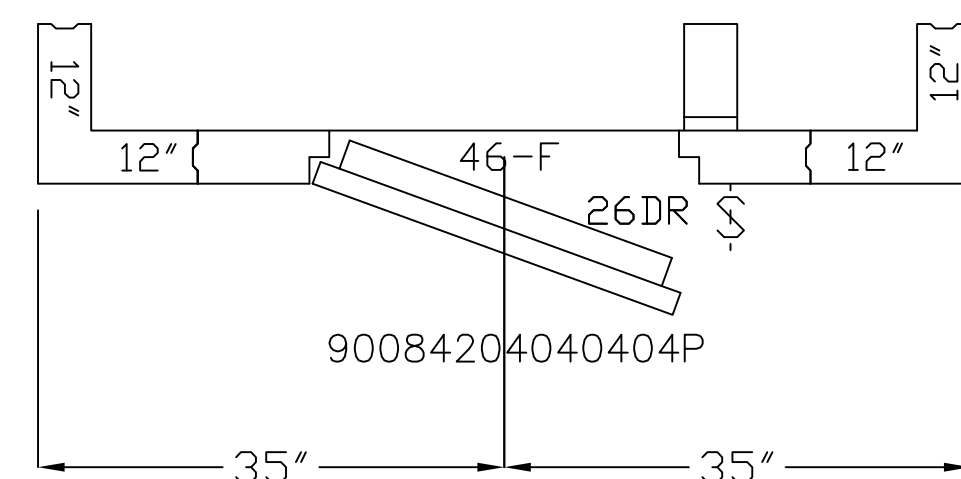
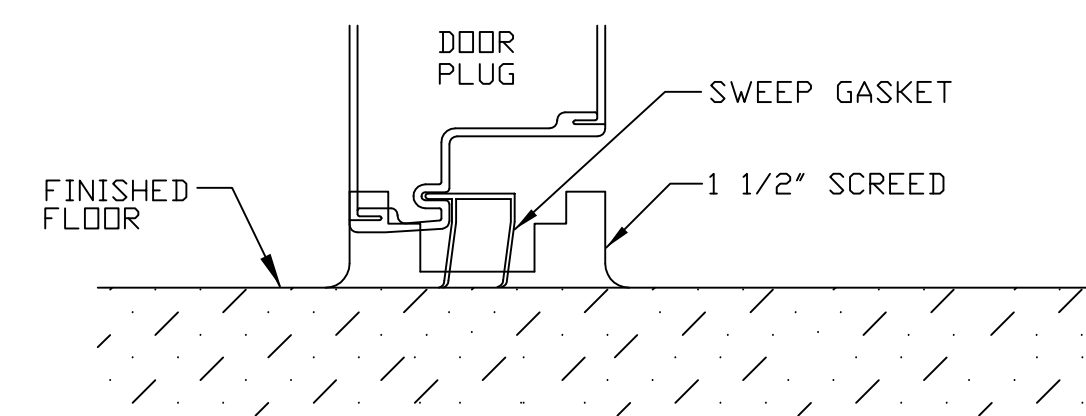
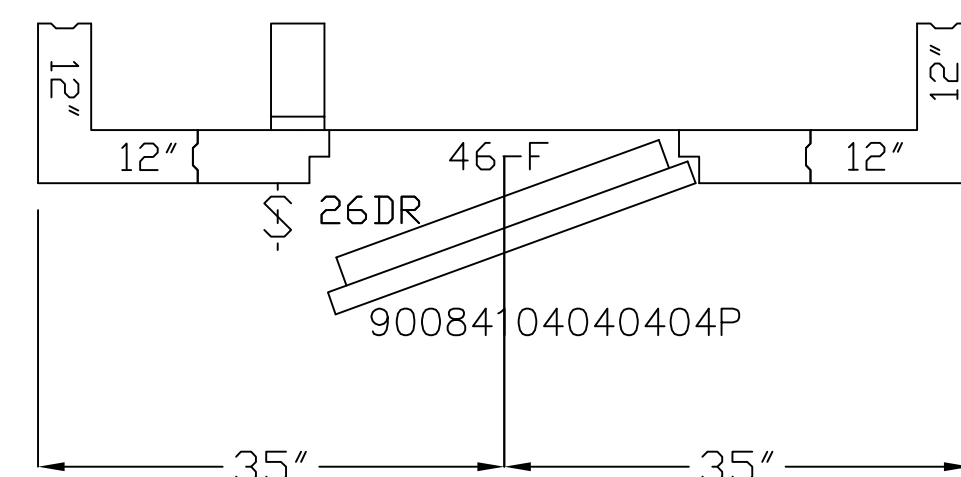


COOLER

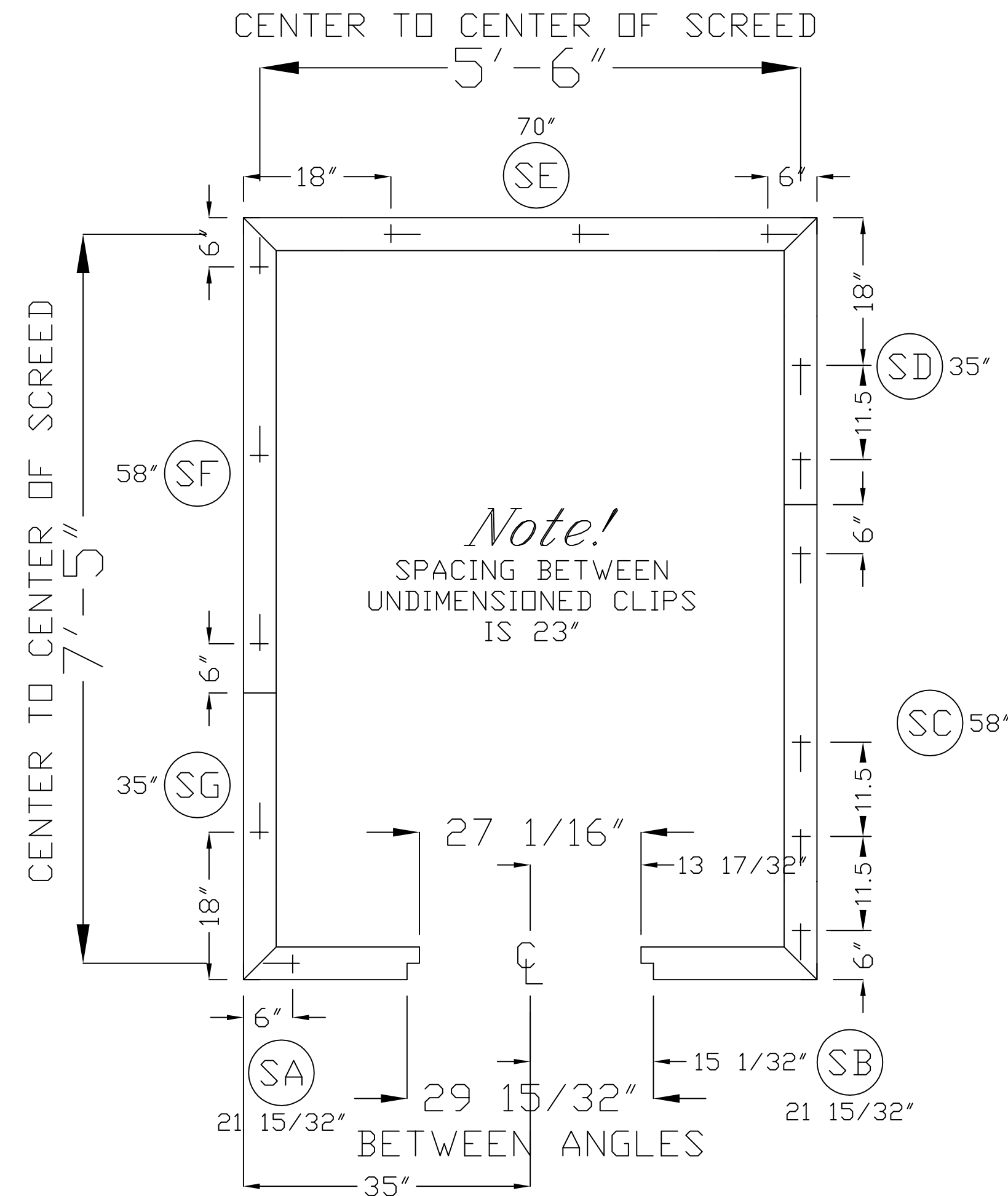
**OPTION A DOOR SWING**



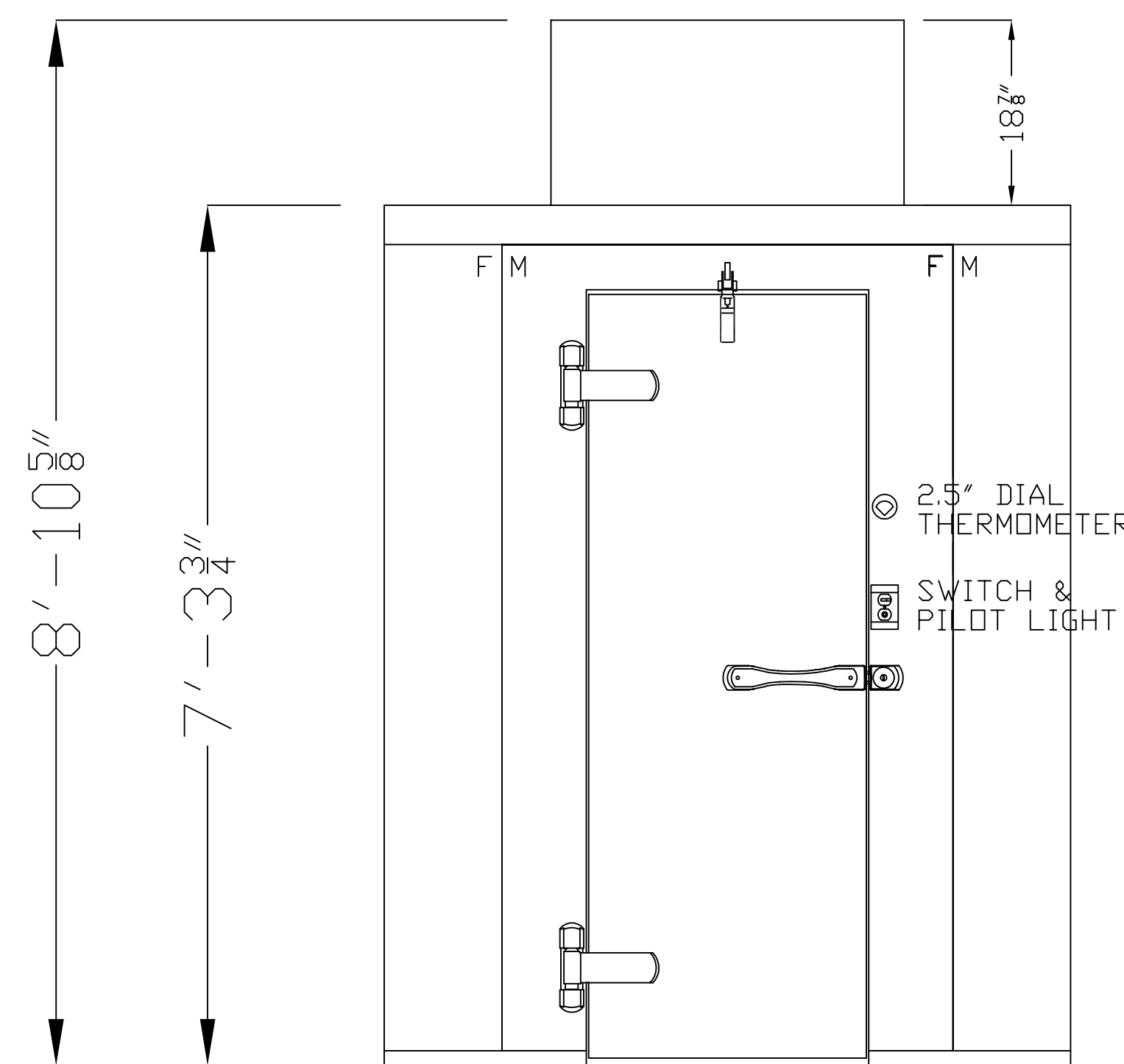
**OPTION B DOOR SWING**



FLOORLESS COOLER WITH  
1 1/2" VINYL SCREED  
DETAIL (40)



1 1/2" VINYL SCREED  
(WITH SCREED DIMENSION REQUIREMENTS)  
QSX7068VSCD4  
7 PIECES



DOOR ELEVATION  
46x82.25DS 26X78 DR CLR FLS  
THRESHOLD DETAIL 40

**WALK-IN SPECIFICATIONS**

**SIZE:** 5'-10" X 7'-9" X 7'-3 3/4"

**PANELS:**

ALL FOAMED PANELS ARE 4"

**EXTERIOR FINISH:**

ALL 26 GA STUCCO GALVALUME

**INTERIOR FINISH:**

ALL 26 GA STUCCO GALVALUME

**FLOOR TYPE:**

COOLER - 1 1/2" VINYL SCREED

**HEIGHT:**

OD 7'-3 3/4" ID 6'-11 3/4"

**DOORS:**

46x82.25DS 26X78 DR CLR FLS  
115-60-1/1.0 AMPS

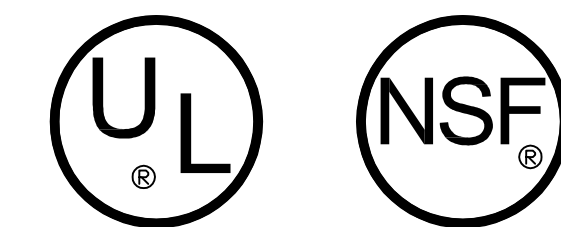
**ACCESSORIES:**

(NONE)

**REFRIG:** POLAR-PAK

OPTION (1) PC069T2 115/60-1 R404A 16.3 AMPS  
OPTION (2) PC069T3 208/230/60-1 R404A 6.3 AMPS

**USE this drawing for installation**



**IMPORTANT NOTES:**

- 1) ALLOW MINIMUM 1" CLEARANCE ALL AROUND WALK-IN.
- 2) WALK-IN CEILING IS NOT DESIGNED FOR FOOT TRAFFIC OR STORAGE.
- 3) GENERAL CONTRACTOR TO REFER TO DESIGN AND SPECIFICATIONS MANUAL FOR FLOOR DETAIL INFORMATION.
- 4) SPECIAL NOTE TO GENERAL CONTRACTOR AND SUBCONTRACTOR FOR QUARRY TILE OR CONCRETE WEARING FLOOR - THE SHEET METAL PANEL FACINGS MAY BE SUSCEPTABLE TO STAINING DUE TO EXCESSIVE MOISTURE CREATED BY THE HYDRATION OF CONCRETE TYPE MATERIALS. THEREFORE, IT IS ABSOLUTELY NECESSARY THAT EACH ROOM BE PROPERLY VENTILATED. ALSO NOTE THAT SPECIAL PRECAUTIONS MUST BE TAKEN WHEN USING MURIC ACID DUE TO EFFECTS HYDROCHLORIC ACID FUMES HAVE ON ALUMINUM AND STAINLESS STEEL MATERIALS.

SCALE:	3/8"=1'-0"
DRAWN BY:	SB
DATE:	05/15/2010
DEALER:	PROJECT: 5'-10" X 7'-9" X 7'-3 3/4"
2915 TENNESSEE AVENUE NORTH P.O. BOX 550 PARSONS, TN, 38363 (901) 847-6361	
<b>KOLPAK</b> WALK-INS	