

## 32E Series – Endless Design Single Duty – Deli

• PRODUCT SPECIFICATIONS SHEETS



• Cases are designed to operate at 75 degrees Fahrenheit and 55% relative humidity

**Self-Contained**  
**Remote**

**SC-CDS32E-4**  
**R-CDS32E-4**

**SC-CDS32E-6**  
**R-CDS32E-6**

**SC-CDS32E-8**  
**R-CDS32E-8**

**Length with (2) ends**

50"

74"

98"

**Length without ends**

48"

72"

96"

**Height with ends**

49-5/8"

49-5/8"

49-5/8"

**Height without ends**

49"

49"

49"

**Depth with ends**

30-1/2"

30-1/2"

30-1/2"

**Depth without ends**

29-1/2"

29-1/2"

29-1/2"

**Endless Design**

YES

YES

YES

(Dimensions are +/- 1/4")

• Specification subject to change without notice

### Standard Specifications and Optional Features

<p><b>CONSTRUCTION</b>          UL Classified to ANSI/NSF 7          Foamed in place CFC free foam          Triple pane insulated front glass-28"H          Heavy gauge steel super structure          Single duty display          Endless design allows for continuous line up          Drain is included for cleaning</p>	<p><b>FINISHES</b>          Satin finish extrusion on doors and door tracks          Designer white exterior front and ends          Stainless steel mirror trim          Stainless steel heavy gauge top – 20" W          Rear of unit is stainless steel brush finish at top          Bottom rear is designer white aluminum</p>
<p><b>INTERIOR</b>          Designer white ends          Stainless steel heavy gauge mezzanine shelf (2rows)          White aluminum floor-main deck area          Epoxy coated main deck shelves          Air insulated baffle (prevents moisture from dripping into display area)</p>	<p><b>REFRIGERATION</b>          Copevap system (eliminates need for condensate pan)          R134a expansion valve system          Gravity coil located at inside top of unit          Self contained system          Automatic defrost controlled by time clock-(self contained units only)          Pressure control maintains constant temperatures          Remotes available</p>
<p><b>EXTERIOR</b>          Double pane rear removable doors          Newly designed rear compression door jamb          Removable front grille allows for cleaning          Removable rear grille for easy servicing          1" removable end panels</p>	<p><b>LIGHTING</b>          2 Row of T12 lighting at top of unit</p>
<p><b>ELECTRICAL REQUIREMENTS</b>          115V/60Hz/1Ph          Unit must be hard wired          UL/CUL listed          115V-12AMP general purpose receptacle (wired separately)</p>	<p><b>Important Note: All refrigerated cases are designed to operate in an environment of 75 degrees and 55% relative humidity.</b></p> <p><b>Important Note: Product must be cooled before being displayed within the case.</b></p>

### OPTIONAL FEATURES

<p>Stainless steel, laminate, or paint          Mirrored doors          Extra stainless steel mezzanine shelf          Front bumper 1" or 3"</p>	<p>Door locks          Pass thru front doors          Sandwich racks          Salad pan settings</p>
--	--



## 32E Series – Endless Design Single Duty – Deli

### Technical Data

Model #	Self contained	SC-CDS32E-4	SC-CDS32E-6	SC-CDS32E-8
	Remote	R-CDS32E-4	R-CDS32E-6	R-CDS32E-8
Length with (2) ends Length without ends Height with ends Height without ends Depth with ends Depth without ends Endless design (Dimensions are +/- 1/4")		50" 48" 49-5/8" 49" 30-1/2" 29-1/2" YES	74" 72" 49-5/8" 49" 30-1/2" 29-1/2" YES	98" 96" 49-5/8" 49" 30-1/2" 29-1/2" YES
Operating temperature Refrigerant (expansion valve) Compressor size HP Pressure control settings @ 75°F, 55%RH  Defrost per day (24 hours) BTU's at +20°F Evap. Temp. Voltage Amperage Amperage, lights only Cord and plug	Self contained Self contained  CUT IN CUT OUT Air Defrost Remote  Self contained Remote	36°F to 40°F R134a 1/4  30 12 1 per day 1400 115V 6.0A 0.8A No	36°F to 40°F R134a 1/3  30 12 1 per day 2100 115V 9.1A 1.6A No	36°F to 40°F R134a 1/2  30 12 1 per day 2800 115V 11.2A 1.6A No
Exterior color Interior color Inside end panels Floors # of top doors Door size # of coils Bottom storage Front glass # of main deck shelves Main deck size Cubic capacity (ft <sup>3</sup> ) Mezzanine Shelf, 2 rows		White Stainless White White 2 20-1/2"X23-1/2" 1 No 28"X46-11/16" 2 23-5/8"X25" 23 Standard	White Stainless White White 2 31"X23-1/2" 1 No 28"X70-11/16" 3 23-5/8"X25" 34.5 Standard	White Stainless White White 4 20-1/2"X23-1/2" 1 No 28"X94-11/16" 4 23-5/8"X25" 46 Standard

### SHIPPING INFORMATION

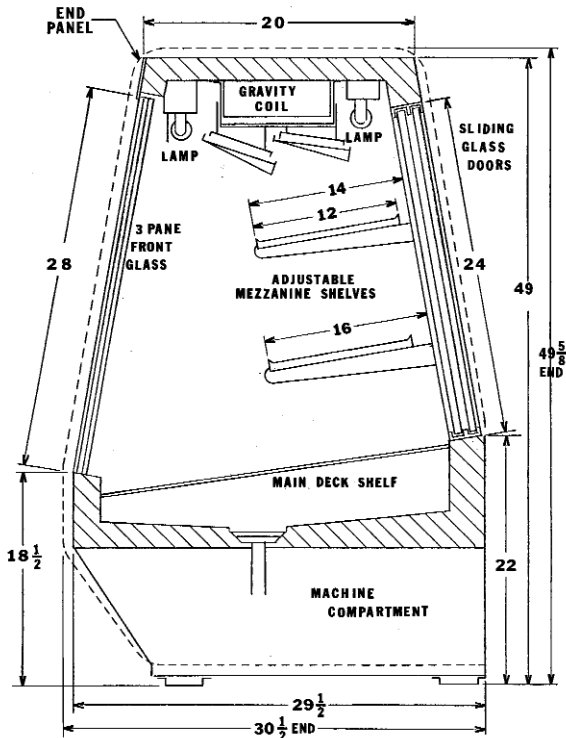
Height		55"	55"	55"
Depth		44"	44"	44"
Length		61"	87"	115"
Gross weight	Self contained Remote	470# 430#	680# 630#	910# 860#
Cubic feet		85ft <sup>3</sup>	122ft <sup>3</sup>	161ft <sup>3</sup>

- Cases are designed to operate at 75 degrees Fahrenheit and 55% relative humidity
- Cases are equipped with drains; check your local building codes for connection requirements.
- Specification subject to change without notice

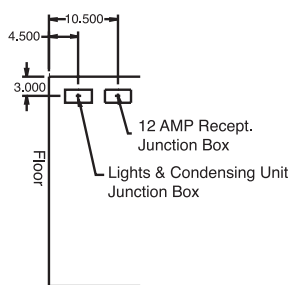
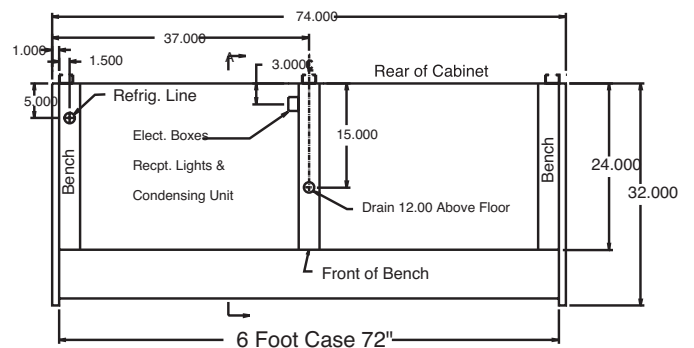
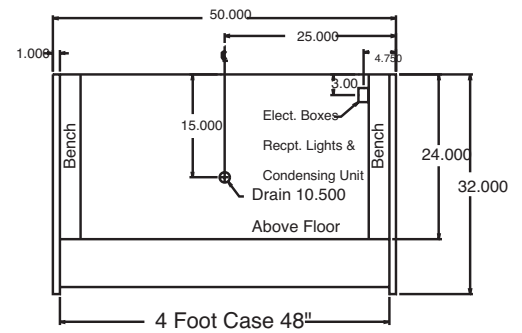
**A Division of HMC Enterprises LLC • 2501 Grant Avenue • Philadelphia, PA 19114 USA**

(215) 464-6800 • 1-800-344-8222 • Fax (215) 969-4890 • E-Mail: sales@howardmccray.com • www.howardmccray.com

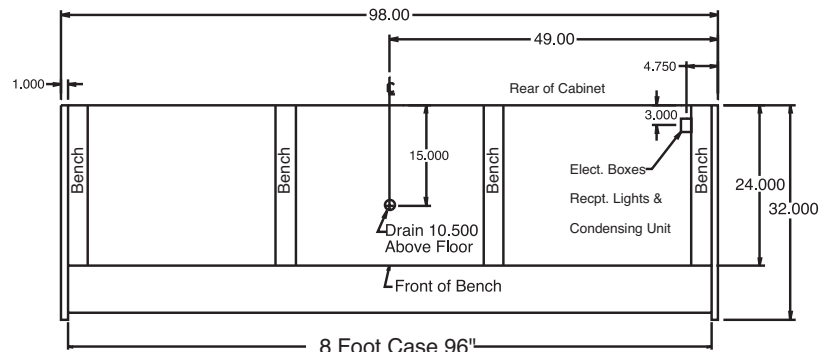
### Technical Data • Side View • Plan View



Cross Section



Side View



Plan Views