

## 35 Series - Low Profile 44"H Double Duty - Deli

- PRODUCT SPECIFICATIONS SHEETS



- Cases are designed to operate at 75 degrees Fahrenheit and 55% relative humidity

**Self Contained**  
**Remote**

**SC-CDS35-4L**  
**R-CDS35-4L**

**SC-CDS35-6L**  
**R-CDS35-6L**

**SC-CDS35-8L**  
**R-CDS35-8L**

**Length**

50"

71"

95"

**Height**

44"

44"

44"

**Depth**

35-1/2"

35-1/2"

35-1/2"

**Depth with bottom door**

38-1/2"

38-1/2"

38-1/2"

(Dimensions are +/-1/4")

- Specification subject to change without notice

## 35 Series – Low Profile 44"H Double Duty – Deli

### Standard Specifications and Optional Features

<p><b>CONSTRUCTION</b>          UL Classified to ANSI/NSF 7          Foamed in place CFC free foam          Triple pane insulated front glass-26"H          Heavy gauge steel super structure          Bottom storage          Drain is included for cleaning</p>	<p><b>FINISHES</b>          Satin finish extrusion on doors and door tracks          Designer white exterior front and ends          Stainless steel mirror trim          Stainless steel heavy gauge top - 17" W          Designer white exterior rear</p>
<p><b>INTERIOR</b>          Designer white ends          Stainless steel heavy gauge mezzanine shelf          White aluminum floor (<i>bottom storage area</i>)          Air insulated baffle (<i>prevents moisture from dripping into display area</i>)          Epoxy coated main deck shelves</p>	<p><b>REFRIGERATION</b>          Copevap system (<i>eliminates need for condensate pan</i>)          R134a expansion valve system          Gravity coil located at <i>inside top of unit and bottom storage area</i>          Self contained system          Automatic defrost controlled by time clock-(<i>self contained units only</i>)          Pressure control maintains constant temperatures          Remotes available</p>
<p><b>EXTERIOR</b>          Double pane rear removable doors          Newly designed rear compression door jamb          Removable front grille allows for cleaning          Removable rear grille for easy servicing</p>	<p><b>LIGHTING</b>          2 Rows of T12 lighting at top of unit</p>
<p><b>ELECTRICAL REQUIREMENTS</b>          115V/60Hz/1Ph          Unit must be hard wired          UL/CUL listed          115V-12AMP general purpose receptacle (<i>wired separately</i>)</p>	<p><b><i>Important Note: All refrigerated cases are designed to operate in an environment of 75 degrees and 55% relative humidity.</i></b></p> <p><b><i>Important Note: Product must be cooled before being displayed within the case.</i></b></p>

### OPTIONAL FEATURES

<p>Scale stand          Paper cutter          Stainless steel, laminate, or paint          Mirrored doors          Extra row of mezzanine shelf</p>	<p>Front bumpers 1" or 3"          Door locks          Digital thermometer          Pass thru front doors          Sandwich racks</p>
---	---



## 35 Series – Low Profile 44"H Double Duty – Deli

### Technical Data

Model #	Self contained	SC-CDS35-4L	SC-CDS35-6L	SC-CDS35-8L
	Remote	R-CDS35-4L	R-CDS35-6L	R-CDS35-8L
Length Height Depth Depth with Bottom door (Dimensions are +/- 1/4")		50" 44" 35-1/2" 38-1/2"	71" 44" 35-1/2" 38-1/2"	95" 44" 35-1/2" 38-1/2"
Operating temperature Refrigerant (expansion valve) Compressor size HP Pressure control settings @ 75°F, 55%RH  Defrost per day (24 hours) BTU's at +20°F Evap. Temp. Voltage Amperage Amperage, lights only Cord and plug	Self contained Self contained  CUT IN CUT OUT Air Defrost Remote  Self contained Remote	36°F to 40°F R134a 1/4  30 12 1 per day 1400 115V 6.0A 0.8A No	36°F to 40°F R134a 1/3  30 12 1 per day 2100 115V 8.7A 1.3A No	36°F to 40°F R134a 1/3  30 12 1 per day 2800 115V 9.1A 1.6A No
Exterior color Interior color Floors # of top doors Door size # of bottom doors  Front glass # of coils Bottom storage Main deck shelf # Main deck size Cubic capacity (ft <sup>3</sup> ) Mezzanine shelf	Self contained Remote	White White White 2 19-3/16"X19-3/16" 1 2 26" X 45" 2 Yes 2 22-1/4"X31-5/8" 23 Standard	White White White 2 29-5/8"X19-3/16" 2 3 26" X 66" 2 Yes 3 22-1/4"X31-5/8" 34 Standard	White White White 4 19-3/16"X19-3/16" 3 4 26" X 90" 2 Yes 4 22-1/4"X31-5/8" 45 Standard

### SHIPPING INFORMATION

Height		58"	58"	58"
Depth		44"	44"	44"
Length		61"	87"	109"
Gross weight	Self contained Remote	480# 434#	625# 571#	880# 826#
Cubic feet		89ft <sup>3</sup>	128ft <sup>3</sup>	164ft <sup>3</sup>

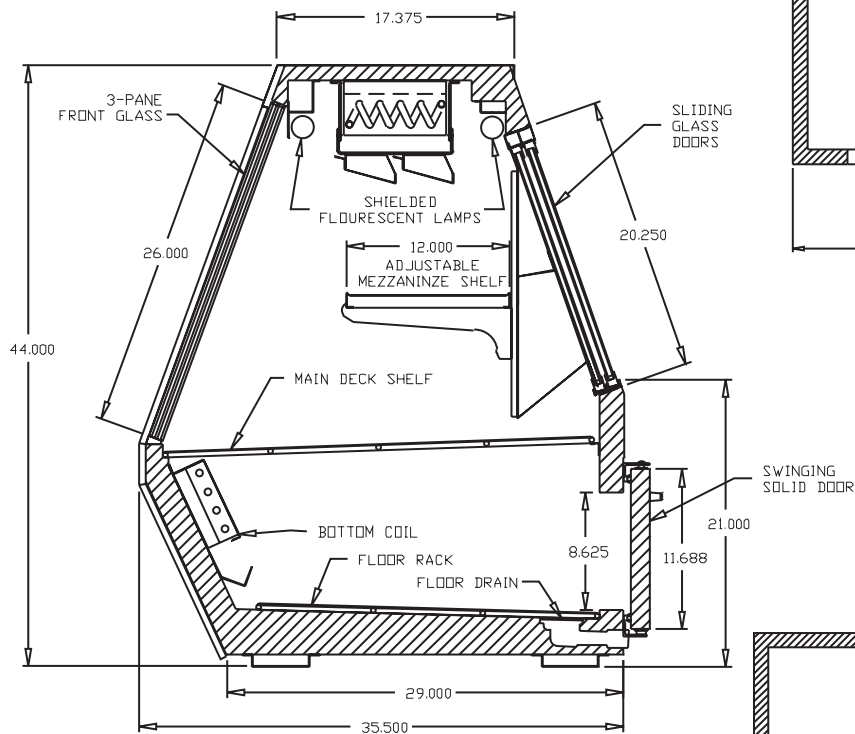
- Cases are designed to operate at 75 degrees Fahrenheit and 55% relative humidity
- Cases are equipped with drains; check your local building codes for connection requirements.
- Specification subject to change without notice

**A Division of HMC Enterprises LLC • 2501 Grant Avenue • Philadelphia, PA 19114 USA**

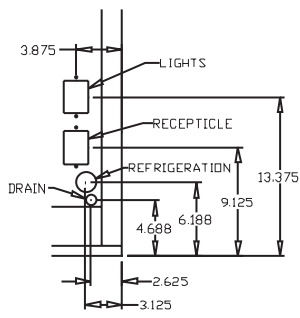
(215) 464-6800 • 1-800-344-8222 • Fax (215) 969-4890 • E-Mail: sales@howardmccray.com • www.howardmccray.com

## 35 Series – Low Profile 44"H Double Duty – Deli

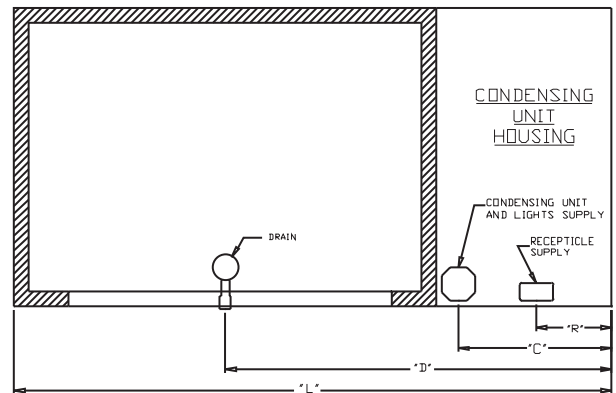
### Technical Data • Side View • Plan View



Cross Section

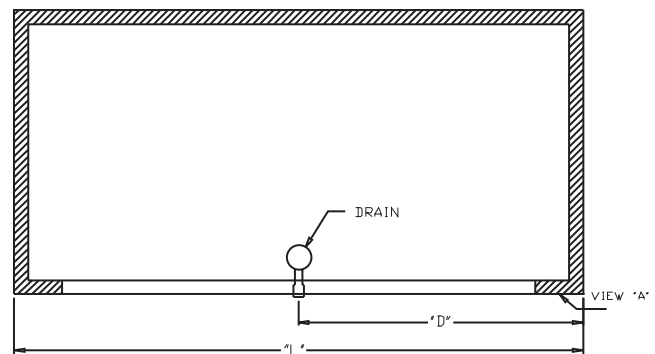


VIEW "A"



SIZE	"L"	"R"	"C"	"D"
4	50	25	25	33
6	71	9	18.250	45.875
8	95	9	18.250	57.875
10	119	9	18.250	69.875
12	143	9	18.250	81.875

Plan View Self-contained



SIZE	"L"	"D"
4	50	25
6	71	35.500
8	95	47.500
10	119	59.500
12	143	61.500

Plan View Remote