

## 40E Series - Endless Design Single Duty - Red Meat

• PRODUCT SPECIFICATIONS SHEETS



- Cases are designed to operate at 75 degrees Fahrenheit and 55% relative humidity

**Self-Contained  
Remote**

**SC-CMS40E-8  
R-CMS40E-8**

**SC-CMS40E-12  
R-CMS40E-12**

**Length with (2) ends**

100-1/2"

148-1/2"

**Length without ends**

96"

144"

**Height with ends**

53"

53"

**Height without ends**

52-1/2"

52-1/2"

**Depth with ends**

40"

40"

**Depth without ends**

39-1/2"

39-1/2"

**Endless Design**

YES

YES

(Dimensions are +/-1/4")

- Specification subject to change without notice

## 40E Series - Endless Design Single Duty - Red Meat

### Standard Specifications and Optional Features

<p><b>CONSTRUCTION</b>          UL Classified to ANSI/NSF 7          Foamed in place CFC free foam          Triple pane insulated front glass- 28"H          Heavy gauge steel super structure          Single duty display          Endless design allows for continuous line up          Drain is included for cleaning</p>	<p><b>FINISHES</b>          Satin finish extrusion on doors and door tracks          Designer white exterior front and ends          Stainless steel mirror trim          Stainless steel heavy gauge top- 20" W          Rear of unit is stainless steel brush finish at top          Bottom rear is designer white aluminum</p>
<p><b>INTERIOR</b>          Designer white interior ends          Air insulated baffle (<i>prevents moisture from dripping into display area</i>)          Epoxy coated main deck shelves</p>	<p><b>REFRIGERATION</b>          Copevap system (<i>eliminates need for condensate pan</i>)          R134a expansion valve system          Gravity coil located at <i>inside top of unit</i>          Self contained system          Automatic defrost controlled by time clock-<i>(self contained units only)</i>          Pressure control maintains constant temperatures          Humidity coil located at main deck          Remotes available</p>
<p><b>EXTERIOR</b>          Double pane rear removable doors          Newly designed compression door jamb          Removable front grille allows for cleaning          Removable rear grille for easy servicing          2-1/4" removable end panels          Front bumper 1"- gray</p>	<p><b>LIGHTING</b>          2 Rows of T12 lighting at top of unit</p>
<p><b>ELECTRICAL REQUIREMENTS</b>          115V/60Hz/1Ph          Unit must be hard wired          UL/CUL listed          115V-12AMP general purpose receptacle (<i>wired separately</i>)</p>	<p><b>Important Note:</b> <i>All refrigerated cases are designed to operate in an environment of 75 degrees and 55% relative humidity.</i></p> <p><b>Important Note:</b> <i>Product must be cooled before being displayed within the case.</i></p>

### OPTIONAL FEATURES

<p>Scale Stand          Paper cutter          Stainless steel, laminate or paint          Mirrored doors          Stainless steel mezzanine shelf          Red meat bulbs</p>	<p>Drop work shelf          Front bumpers 3"          Door locks          Digital thermometer          Meat platters</p>
---	--



## 40E Series - Endless Design Single Duty - Red Meat

### Technical Data

Model	Self contained	SC-CMS40E-8	SC-CMS40E-12
	Remote	R-CMS40E-8	R-CMS40E-12
Length with (2) ends Length without ends Height with ends Height without ends Depth with ends Depth without ends Endless design (Dimensions are +/- 1/4")		100-1/2" 96" 53" 52-1/2" 40" 39-1/2" YES	148-1/2" 144" 53" 52-1/2" 40" 39-1/2" YES
Operating temperature Refrigerant (expansion valve) Compressor size- HP Pressure control settings @ 75°F, 55%RH	Self contained Self contained	34°F to 36°F R134a 1/2	34°F to 36°F R134a 3/4
Defrost per day (24 hours) BTU's at +20°F Evap. Temp. Voltage Amperage Amperage- lights only Cord and plug	Air Defrost Remote  Self Contained Remote	CUT IN CUT OUT 30 12 1 per day 2800 115V 11.2A 1.6A No	30 12 1 per day 4200 115V 17.4A 2.4A No
Exterior color Interior color Inside end panels Floors # of top doors Door size # of coils Bottom storage Front glass # of main deck shelves Shelf size Cubic capacity (ft <sup>3</sup> ) Mezzanine- shelf		White Stainless White White 4 20-1/2"X23-1/2" 2 No 28"X94-11/16" 4 23-1/2"X32-5/8" 49 Optional	White Stainless White White 4 31"X23-1/2" 2 No 28"X142-11/16" 6 23-1/2"X32-5/8" 74 Optional

### SHIPPING INFORMATION

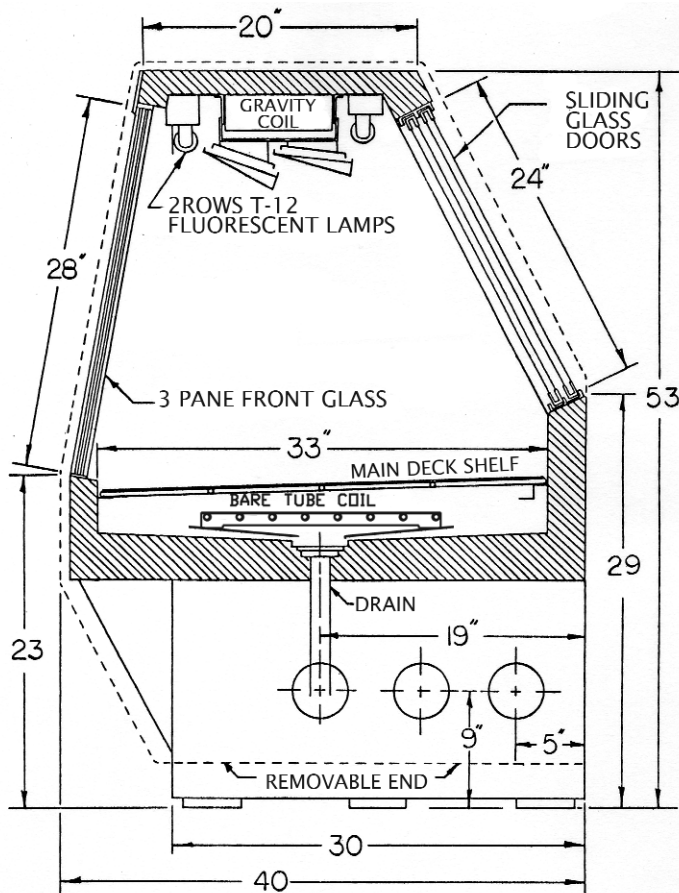
Height		58"	58"
Depth		47"	47"
Length		109"	157"
Gross weight	Self contained Remote	983# 890#	1396# 1325#
Cubic feet		170ft <sup>3</sup>	245ft <sup>3</sup>

- Cases are designed to operate at 75 degrees Fahrenheit and 55% relative humidity
- Cases are equipped with washout drains; check your local building codes for connection requirements.
- Specification subject to change without notice

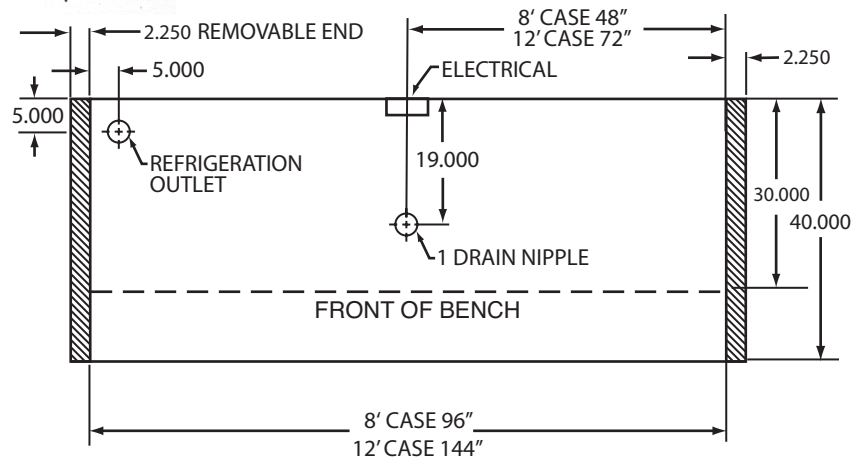
**A Division of HMC Enterprises LLC • 2501 Grant Avenue • Philadelphia, PA 19114 USA**

(215) 464-6800 • 1-800-344-8222 • Fax (215) 969-4890 • E-Mail: sales@howardmccray.com • www.howardmccray.com

## Technical Data • Side View • Plan View



**Cross Section**



**Plan View**