

**35 SERIES
KOLDFLO
SERVICE CASES
FISH / POULTRY
DOUBLE DUTY**

MODEL SC-CFS35-6

McCray

McCray Koldflo Service Cases

FISH / POULTRY DOUBLE DUTY

GENERAL SPECIFICATIONS AND FEATURES

CONSTRUCTION: Body internally reinforced Uni-Structure. Mounted on heavy gauge galvanized external bottom frame with steel channel runners. Built to maintain its shape with heavy duty usage.

INTERIOR: Anodized aluminum full .040 thickness. Display area finished with a hard heat treated white enamel long wearing surface. The floor is stamped out of one sheet of anodized full hard aluminum, and embossed drain off gutters to the built-in drain trap outlet. Sectional, removable floor racks provided to protect inside floor.

EXTERIOR: Mirror finish stainless steel tops and lower front glass sill bumper rail for all case lengths are stamped out of one piece sheet, no seams or joining pieces are permitted. Formed stainless steel end trim protects the case ends from damage. Front and ends finished with a hard heat treated white enamel long wearing surface. Optional color ends and front panel available. Rear of case is of hard wearing aluminum, resistant to grease, and cleans easily.

MODEL CFS FISH CASE: The Model CFS has stainless steel ice pan with built-in drain. The top coil is engineered to provide ©Koldflo gravity cooling to keep Fish or Cut Chicken fresh for long periods.

COLOR BAND: Below the stainless steel glass sill, the color band is made in light oak.

INSULATION: High density energy saving frothed-in-place Urethane equal to twice the insulating value of other insulating materials. CFC free, environmentally safe..

ILLUMINATION: Two rows of full length fluorescent shielded lighting mounted under inside top of case to provide flood lighting through entire interior display area.

APPLIANCE RECEPTACLE: Supplied at rear of case in 115V-15 AMP.

QUALITY CONTROL: All McCray models are fully tested to strict specifications by our Q.C. Test Department.

DOORS: All doors are slide type. Rear display section doors and storage section doors

are constructed of extruded aluminum, reinforced with internal corner gussets. The doors are removable from the metal track frame around the entire opening.

Each door is sealed with a wiper between doors that provides full protection from air leaks. The upper doors are equipped with sealed double pane insulated glass panels. The lower doors are constructed with aluminum interior and exterior insert. The exterior insert is aluminum to match the rear of case construction.

FRONT DISPLAY GLASS: Three pane clear view glasses, sealed into insulating spaces. Guaranteed for 5 years against display distortion from defect to the seal between the glasses.

REFRIGERATION: Self Contained.

All models are equipped with extra heavy duty cooling coils. Efficient gravity ©Koldflo coils. The top coil has 10 tubes. Coil is length of case. Expansion valve supplied. Standard.

Self Contained models are fully interconnected with the compressor unit, built into the lower compartment at one end, ready for operation when supplied with suitable voltage. See compressor unit data for sizes and electrical information. Copeland compressors standard. Pull out units for serviceability.

REMOTE: available.

ENERGY SAVER CONDENSATE EVAPORATOR: On self-contained models condensate is dissipated automatically by means of condensing unit hot gas.

DEFROST TIME CLOCK: Adjustable time clock furnished standard. Defrosts coil automatically as customer requires. (self-contained models only)

FLOOR RACKS: Coated white epoxy heavy welded wire rods.

NOTE: All specifications are subject to change without notice. Maximum recommended ambient conditions 75°F, 55% R.H.

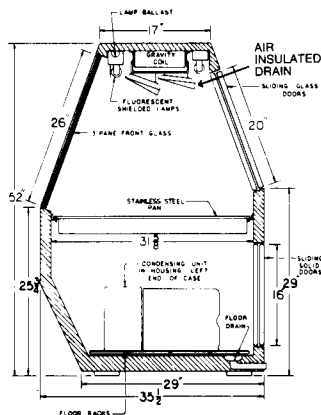
ENGINEERING SPECIFICATIONS

Model No.	Upper Door Size	Lower Door Size	Display Glass	*Elec. Voltage	Amps	Wt.	Cube	Comp.	Case Dimensions
SC-CFS35-4	19 3/16"L x 19 3/16"H	Hinged 24 1/2"L x 19 3/4"H	26" x 45"		6.0	500	67.4	1/4	50" x 35 1/2" x 52" 1270 x 901 x 1320 mm
SC-CFS35-6	29 5/8"L x 19 3/16"H	19 3/16"L x 15 9/16"H	26" x 66"	115V 60C	6.4	645	87.3	1/4	72" x 35 1/2" x 52" 1828 x 901 x 1320 mm
SC-CFS35-8	19 3/16"L x 19 3/16"H	29 5/8"L x 15 9/16"H	26" x 90"	1 Phase	9.1	900	136.9	1/2	96" x 35 1/2" x 52" 2438 x 901 x 1320 mm
SC-CFS35-10	23 1/2"L x 19 3/16"H	27 1/8"L x 15 9/16"H	26" x 114"	115V 60C	9.9	1100	177.7	1/3	120" x 35 1/2" x 52" 3048 x 901 x 1320 mm
SC-CFS35-12	29 5/8"L x 19 3/16"H	23 1/2"L x 15 9/16"H	26" x 138"	1 Phase	13.8	1350	208.3	1/2	144" x 35 1/2" x 52" 3657 x 901 x 1320 mm

©All Rights Reserved, McCray Refrigerator ©Koldflo, registered.

*Power Supply Connection Required

NO. OF UPPER DOORS: 6'-2, 8'-4, 10'-4, 12'-4; NO. OF LOWER DOORS: 6'-2, 8'-2, 10'-3, 12'-4



CFC FREE INSULATION	134a CFC FREE	MADE IN USA
---------------------	---------------	-------------

