



JOF ONE & JOF 23

Blast Chiller/Blast Freezer



JOF One



JOF 23



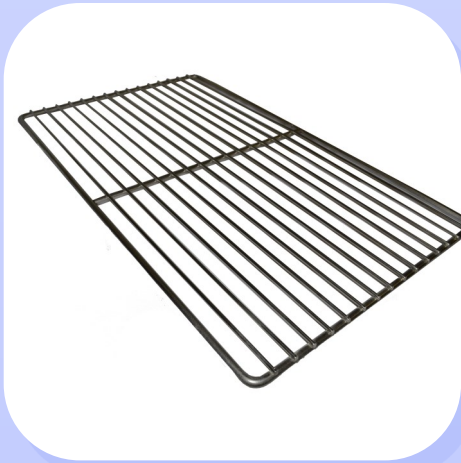
- Stainless Steel Construction
- Electronics for cycle selection and versatile control of operations
- Stainless steel shelving available
- Large capacity for small places
- Shelves NOT included, order separately



Offered Exclusively in the United States by:



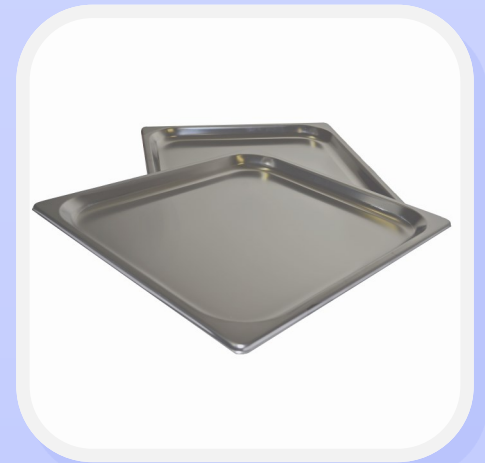
ACCESSORY OPTIONS



JOF-One Wire Shelf:
W:23-1/2"
D:15-3/4"

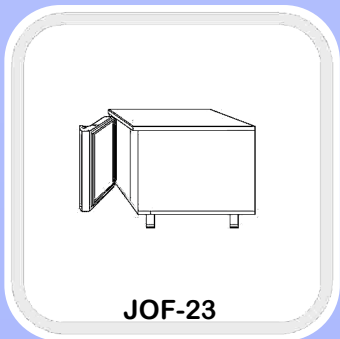
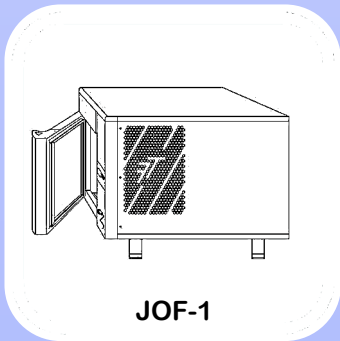


JOF-23 Wire Shelf:
W:14"
D:12-3/4"



JOF-23 Aluminum Pan:
W:14"
D:12-3/4"

TECHNICAL SPECIFICATIONS



	JOF-ONE	JOF-23	JOF23-A
Capacity	2.9 Ft. ³ 3 Optional Trays	1.18 Ft. ³ 3 Optional Trays	1.18 Ft. ³ 3 Optional Trays
Performance	Freezing capacity to -40°F	Freezing capacity to -40°F	Freezing capacity to -40°F
Internal Dimensions	16.5"L X 24"D X 12.8H	13.39"L X 14.17"D X 10.63"H	13.39"L X 14.17"D X 10.63"H
External Dimensions	26.4"L X 29.5"D X 19.7"H	23.62"L X 23.62"D X 15.35"H	23.62"L X 23.62"D X 15.35"H
Electrical	208-230V / 1PH / 60Hz/15Amp	208-230V / 1PH / 60Hz/15Amp	115V/60Hz/15Amp
Running Amps	6Amps	5 Amps	11Amps.
Refrigerant	R404A	R404A	R404A
Total Weight	150 LB	106LB	106LB



Street: 5-C Wendy Court Greensboro, NC 27409~Mail – P.O. Box 18542 Greensboro, NC 27419~Phone: 336-856-2919 / Fax: 336-217-8838
www.AdvancedGourmet.com~sales@AdvancedGourmet.com