



Project:	_____
Location:	_____
Item #:	_____
Quantity:	_____

## Undercounter Salad/Sandwich Top Refrigerators

### One Section Model with Door

**UR-27-SAL**

Stainless Steel Exterior with One Piece ABS Interior.



**UR-27-SAL**

#### Standard Features:

- Food Pans are Recessed into a 2" Top which is Insulated with Foamed-in-place Polyurethane Insulation Creating an Insulated "Air Dam" which Surrounds the Pans and Promotes Temperature Maintenance
- Cold Air is Distributed Through a Plenum Chamber Directly to the Food Pans Enveloping Each Pan in Refrigerated Air
- Positive Pressure and Unique "Air Jacket" Technology Allow Cold Air to Gently Migrate Around and Over Each Pan Forming a Barrier of Cold Air Above the Food Pans
- Keeps Food at Safe Temperatures while Preventing Food from Drying
- Meets Tough NSF Standard 7, 41°
- Heavy Gauge, All Stainless Steel Exterior Construction
- High Impact ABS Interior Liner Provides Exceptional Durability
- Easy to Clean Molded Interior with Coved Corners
- 8 Extra Capacity, 4" Deep Pans Included (6 <sup>1</sup>/<sub>6</sub> Size and 2 <sup>1</sup>/<sub>9</sub> Size)
- Heavy Duty, Epoxy Coated Steel Shelves
- High Density, Foamed-in-place Polyurethane Insulation Assures Temperature Maintenance
- Interior Thermometer Consistently Monitors Temperature
- Coated Evaporator Coil Resists Corrosion
- Energy Efficient, Balanced Refrigeration System
- Stainless Steel Coil Housing Protects Critical Components
- Electrical Cord and Plug Attached for Easy Installation
- Plugs into Standard 110 Outlets
- Automatic Condensate Removal (No Drains Required)
- Stainless Steel Telescoping Lid with Utility Shelf for Storage
- Lid is Easily Removed for Cleaning
- Oversized 12" Cutting Board Provides a Large Work Surface
- Finished All Stainless Steel Top for Durability
- Reversible Cutting Board for Extra Life
- Energy Efficient ABS Breakers Surround Each Door
- Environmentally Friendly R-134a Refrigerant
- Swivel Casters Provide Mobility
- Finished/Enclosed Back Panel

Approvals:		Victory Refrigeration specification sheets are available online at <a href="http://www.victory-refrig.com">www.victory-refrig.com</a> .
------------	--	---

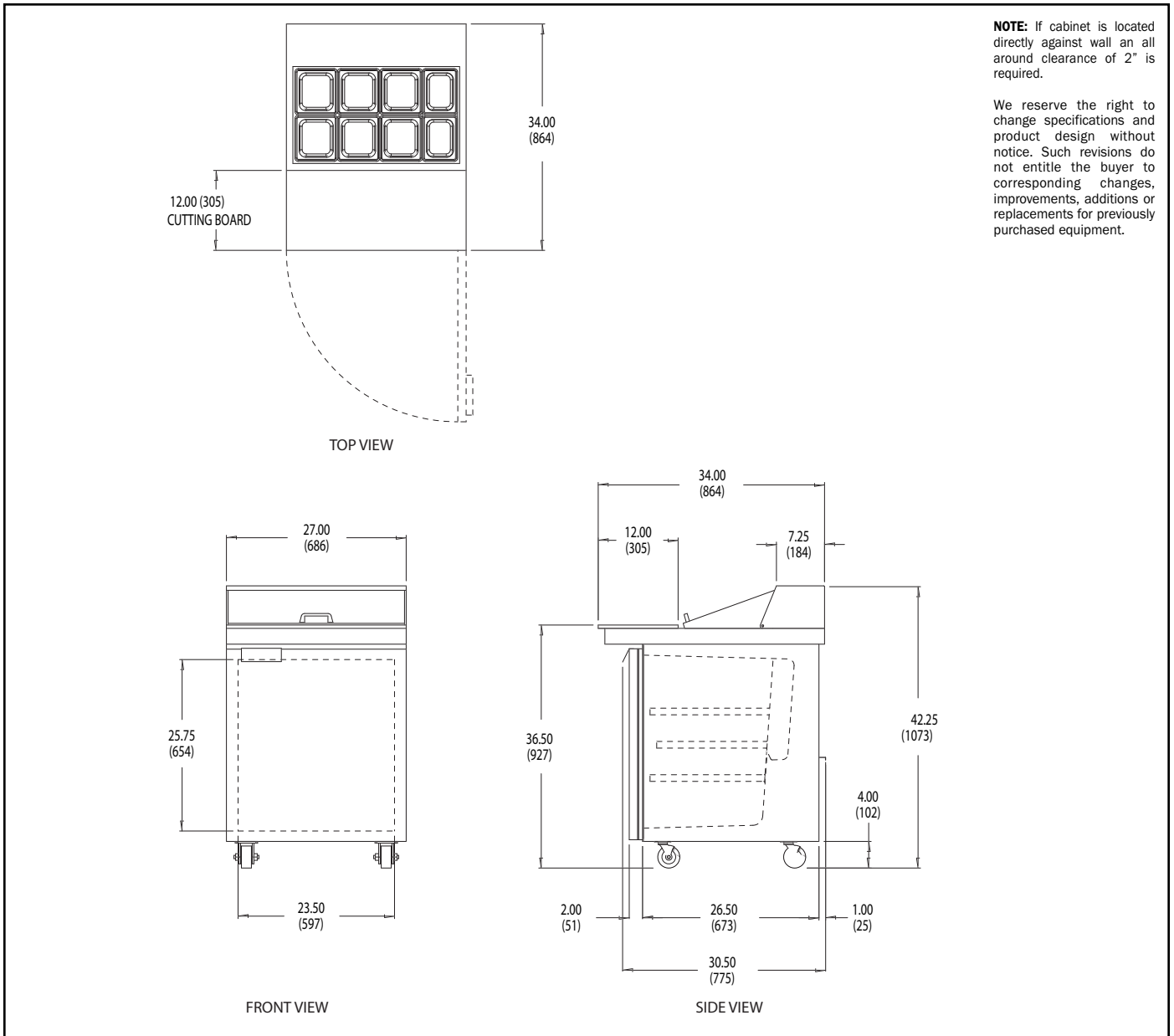
CHARACTERISTICS	ONE SECTION
Width, Overall	27
Depth, Overall	35
Height, Overall (incl. casters)	42 1/4
Depth, Door Open 90°	55 3/8
Clear Door Width	23 1/2
Clear Door Height	25 3/4
Capacity Net (cubic feet)	7.0
No. of Full Doors	1
No. of Shelves	2
Shelf Area (square feet)	7.2
Cabinet Voltage	115/60/1
Feed Wires	2
Condensing Unit Voltage	115/60/1
Condensing Unit Size (HP)	1/5
Total Amperes	5.7

Crated dim. & wts.	Ht.	Width	Depth	Cu. Ft.	Lbs
UR-27-SAL	43	32 1/2	39	32.6	175

**PAN INFORMATION**

Size	No of Pans	Dimensions	Capacity	Top Opening Dimensions
1/8	6	6 7/8 X 6 5/16 X 4	2 Qts @	13 1/16 X 22 1/2
1/9	2	6 3/4 X 4 1/4 X 4	1 1/4 Qts @	13 1/16 X 22 1/2

Dimensional tolerance ± 1/4" Metric dimensions (MM)



Continuous product development may necessitate specification changes and design without notice.



Victory participates in the KCL CADalog, the most current source of CAD symbols for foodservice designers worldwide. Symbols include standard equipment in plan, side, front and 3-D views, layered for FEDA/FCSI recommended guidelines.