

**WATER METERS**

“Superior *quality* product  
 at an *affordable* price !”



**WM35**



**WM45**

**Water meters**

**FEATURING**

- Manual (WM35) or programmable (WM45)
- Digital panel
- Water pressure: from 15 psi to 70 psi (1 bar to 5 bar)
- Water flow rates: from 4.75 usg/min to 10 usg/min
- Water inlet: 1/2" NPT
- Volume measurement accuracy : ± 1%
- Water temperature range: from 35°F to 140°F (2°C to 60°C)
- 120V - 60Hz
- 8.2' (2.5 m) hose for water outlet
- Cord and plug included
- ETL listed
- One year parts and labor limited warranty

**Digital water meters**

Doyon's water meters allow you to add a specific amount of water in your recipes. The digital control panel with separate hot and cold water inlets will let you measure water quantity and temperature to help you get dough consistency for perfect products everytime.

**DIMENSIONS**

WM35 17"W X 6 7/8"D X 17 5/8"H  
(432 mm X 175 mm X 454 mm)  
WM45 19"W X 7 3/4"D X 18"H  
(483 mm X 197 mm X 457 mm)

**ELECTRICAL SYSTEM**

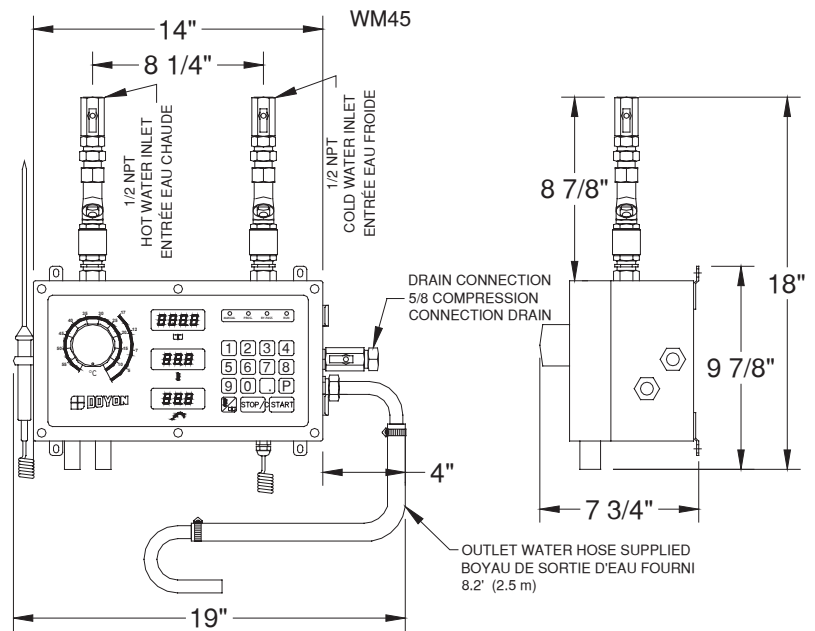
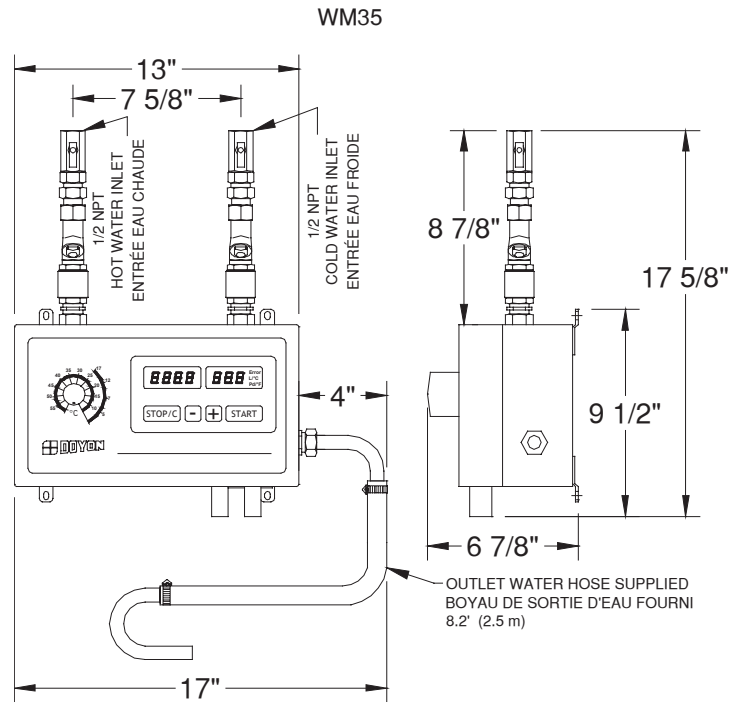
120V - 60Hz

Water Inlet : 1/2" NPT

**SHIPPING WEIGHT**

WM35 25 lb (11.5 kg) approximately  
WM45 30 lb (13.5 kg) approximately

Specifications and design subject to change without notice.



1255, rue Principale  
Linière, Beauce, Québec, Canada G0M 1J0

Telephone : (418) 685-3431 Fax: (418) 685-3948  
Canada : (800) 463-1636 U.S.: (800) 463-4273  
E-Mail : doyon@doyon.qc.ca Internet: http://www.doyon.qc.ca



Your local distributor:

