

WINE STORAGE INSTALLATION INSTRUCTIONS

INSTRUCCIONES DE INSTALACIÓN

INSTRUCTIONS D'INSTALLATION

ISTRUZIONI PER L'INSTALLAZIONE

INSTALLATIONSANWEISUNGEN





SUB-ZERO® is a registered trademark of Sub-Zero, Inc.

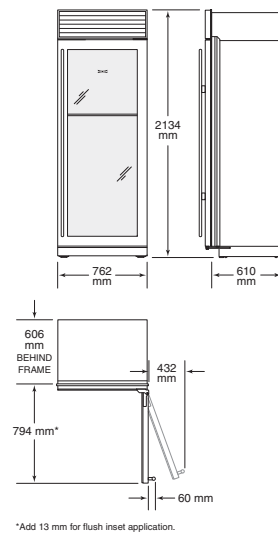
Model ICBWS-30 Installation

Make sure that the actual equipment that was shipped to you matches the design you are expecting to install. Before you begin the installation process, check the exact model number you need against the model number on the shipping carton. If the unit you receive does not match your requirements, contact your Sub-Zero dealer.

The model ICBWS-30 wine storage unit offers the following design alternatives—overlay, flush inset and stainless steel models. The overlay model has two design applications—overlay and flush inset.

Each of these design options has specific installation requirements, which means it is vital that the unit match your planning and space needs. Refer to the overall dimensions illustration for model ICBWS-30 shown in the stainless steel design. Dimensions will be the same for all design applications.

The door of the model ICBWS-30 opens to a maximum of 110°. A 90° door stop is shipped with the unit. The handle depth reflects a tubular, curved or pro handle. For additional information, refer to the full-scale templates in the Sub-Zero design guide.



Site Preparation

Make sure that the finished rough opening where the wine storage unit is being installed is properly prepared. Refer to installation specifications on the following pages. These specifications are identical for the overlay and stainless steel applications. Installation specifications are different for the flush inset application, whether you are using custom panels or Sub-Zero accessory flush inset panels.

If you are installing two models ICBWS-30, or a model ICBWS-30 and a built-in unit side by side in the overlay, flush inset or stainless steel application, a filler strip is recommended. Add the filler strip width to the finished rough opening dimension. For installation of two units side by side without a filler strip, a dual installation kit will be necessary.

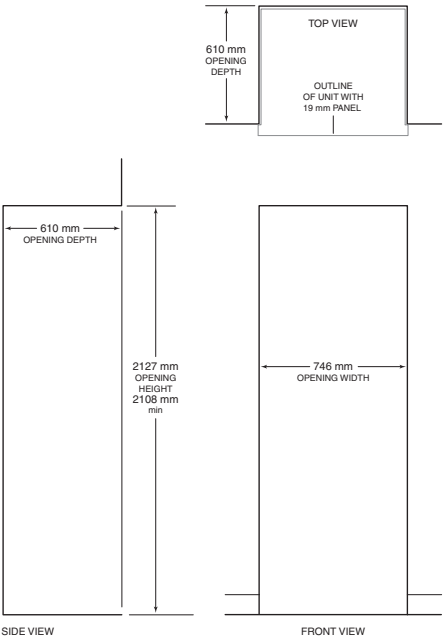
IMPORTANT NOTE: To operate properly, the door must open a minimum of 90°. Use a minimum 76 mm filler in corner installations to assure a 90° door opening. Allow enough clearance in front of the unit for full door swing.

IMPORTANT NOTE: Make sure the floor under the unit is level with the surrounding finished floor.

TOOLS AND MATERIALS REQUIRED:

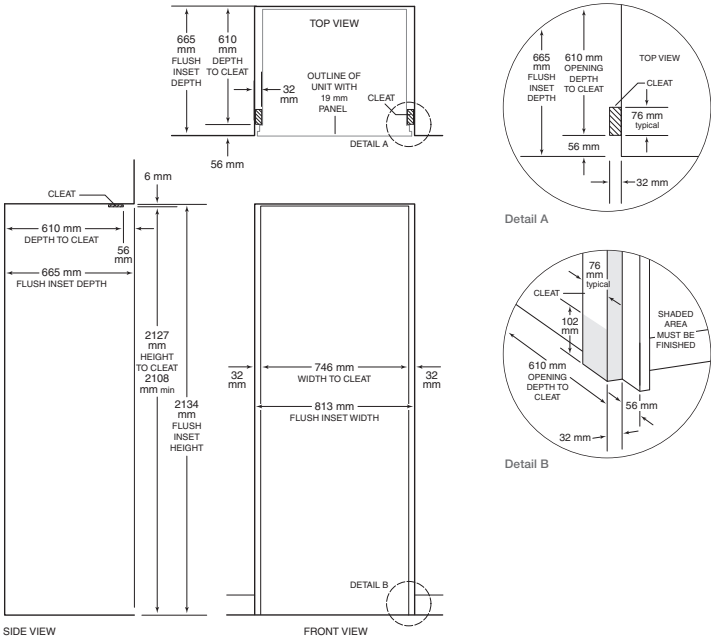
- Phillips screwdriver set
- Slotted screwdriver set
- Torx drive screwdriver set
- 1,2 m of 6,35 mm copper tubing and saddle valve for the water line (4200880) — do not use self-piercing valves
- Copper tubing cutter
- Level — 0,6 m and 1,2 m recommended
- Appliance dolly able to support 317 kg and adequate manpower to handle the weight of the unit
- Various sized pliers
- Wrench set
- Allen wrench set
- 11 mm hex bolt nut driver
- Crescent wrenches
- Cordless drill and assorted drill bits
- Masonite, plywood, 3,175 mm pressed fiberboard, cardboard or other suitable material to protect finished flooring
- Appropriate materials to cover and protect the home and its furnishings during installation

Standard Installation Opening Dimensions
Overlay and Classic Stainless Steel Models



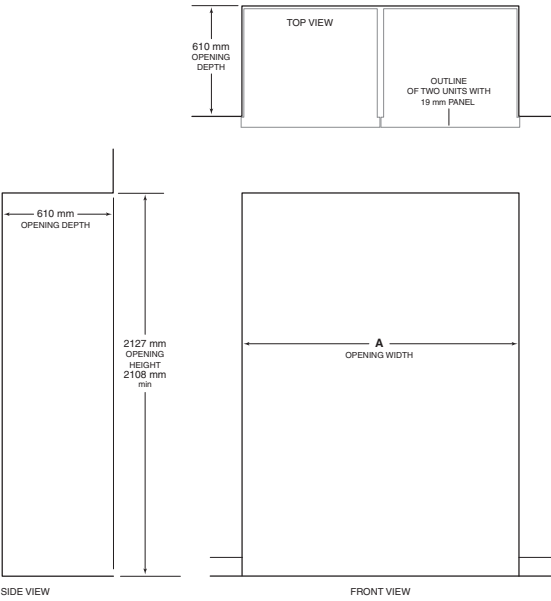
IMPORTANT NOTE: If two units are installed side by side, refer to page 18 for dual standard installations.
Classic stainless steel models are ready to install out of the box.

Flush Inset Installation Opening Dimensions



IMPORTANT NOTE: Dimensions assume a 19 mm panel thickness.
IMPORTANT NOTE: If two units are installed side by side, refer to page 18 for dual flush inset installations.

Dual Standard Installation Opening Dimensions
Overlay and Classic Stainless Steel Models

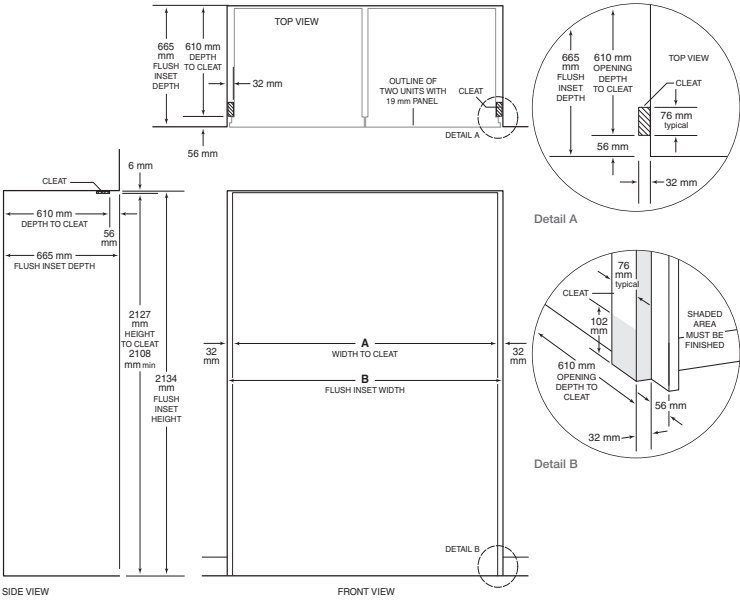


Opening Widths	A
Two 762 mm Models	1518 mm
Model ICBWS-30 and a 914 mm Model	1670 mm

IMPORTANT NOTE: A dual installation kit will be required for this installation.

Classic stainless steel models are ready to install out of the box.

Dual Flush Inset Installation Opening Dimensions



Opening Widths	A	B
Two 762 mm Models	1518 mm	1581 mm
Model ICBWS-30 and a 914 mm Model	1670 mm	1740 mm

IMPORTANT NOTE: Dimensions assume a 19 mm panel thickness. A dual installation kit will be required for this installation.

Electrical Requirements

For model ICBWS-30, the electrical supply should be located within the shaded area shown in the illustration. Follow the National Electrical Code and local codes and ordinances when installing the receptacle. A separate circuit, servicing only this appliance is required.

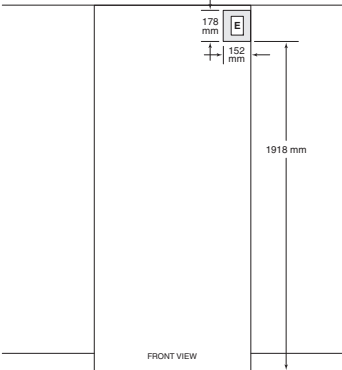
IMPORTANT NOTE: A ground fault circuit interrupter (GFCI) is not recommended and may cause interruption of operation.

⚠ CAUTION

The outlet must be checked by a qualified electrician to be sure that it is wired with the correct polarity. Verify that the outlet provides 220-240 V AC and is properly grounded.

⚠ WARNING

Do not use an extension cord or two-prong adapter. Electrical ground is required on this appliance. Do not remove the power supply cord ground prong.



Location of electrical supply.

Electrical Requirements	
Power Supply	220-240 V AC, 50/60 Hz
Circuit Breaker	10 amp
Receptacle	grounding-type

Unpack the Unit

Uncrate the unit and inspect for any damages. Remove the wood base and discard the shipping bolts and brackets that hold the wood base to the bottom of the unit. Remove and discard all packing materials.

IMPORTANT NOTE: Do not discard the kickplate, anti-tip brackets and hardware. These items will be needed for installation.

Retract the front leveling legs all the way up to allow the unit to be moved into position more easily. You will extend the leveling legs when the unit is in its final position to reduce the possibility of the unit tipping forward.

IMPORTANT NOTE: The rear levelers must be in their lowest position in order to push the unit back into the rough opening. Therefore, leveling cannot be completed until the unit is in position.

Remove the drain pan from the base of the unit to avoid damage to the drain pan, and allow for proper placement of the appliance dolly.

⚠ WARNING

Be sure to secure the door closed before moving the unit.

Grille Removal

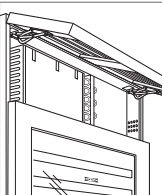
In order to prevent damage to the grille and to access the power cord, the top grille assembly should be removed prior to moving the unit.

To remove the grille assembly, pull out on the bottom edge of the grille and tilt upward. Loosen the back two grille mounting screws and remove the front two grille mounting screws. Refer to the illustrations below. With the grille held firmly, pull forward to remove.

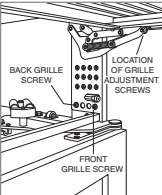
To reinstall the grille, insert the grille into position and be sure that the grille catch tabs are engaged. Reinstall the front two grille screws, then retighten the back two grille screws. Check for proper fit.

GRILLE HEIGHT ADJUSTMENT

The grille was designed to rest on the upper door hinge in an attempt to minimize the reveal between the top of the door and bottom of the grille. To eliminate potential interference of the grille and hinge, the grille height can be adjusted. Loosen the four grille adjustment screws (two on each side) and adjust the grille height as needed. For screw location, refer to the illustration below.



Grille removal.



Grille mounting and adjustment screws.

Anti-Tip Bracket Installation

⚠ WARNING

To prevent the unit from tipping forward and provide a stable installation, the unit must be secured in place with the anti-tip brackets shipped with the unit.

IMPORTANT NOTE: Placement of the anti-tip brackets is critical to a stable installation. Failure to properly position the anti-tip brackets will prevent them from engaging the unit.

IMPORTANT NOTE: The two anti-tip brackets must be installed exactly 610 mm from the front of the rough opening to the back of the brackets and a minimum of 102 mm from the sides of the rough opening. This depth will increase to 665 mm for a flush inset installation based on 19 mm deep decorative panels. Proper placement will ensure that the anti-tip brackets engage the anti-tip bar at the back of the unit.

Anti-Tip Hardware Included	
2	Anti-tip brackets
12	#12 x 64 mm PH pan HD zinc screws
4	10 mm–16 x 95 mm wedge anchors
12	#12 flat washers
4	#8–18 x 32 mm PH truss HD screws
4	Nylon zip-it wall anchors

IMPORTANT NOTE: For either wood or concrete floor applications, if the #12 x 64 mm screws do not hit a wall stud or the wall plate in any of the back holes of the brackets, use the provided #8–18 x 32 mm PH truss HD screws and #12 flat washers with the nylon zip-it wall anchors.

IMPORTANT NOTE: In some installations the subflooring or finished floor may necessitate angling the screws used to fasten the anti-tip brackets to the back wall.

WOOD FLOOR APPLICATIONS

After properly locating the anti-tip brackets in the rough opening, drill pilot holes 5 mm diameter maximum in the wall studs and/or wall plate. Use the #12 x 64 mm PH pan HD zinc screws and #12 flat washers to secure the brackets in place. Be sure that the screws penetrate through the flooring material and into wall studs or wall plate a minimum of 19 mm. Refer to the illustration to the right.

CONCRETE FLOOR APPLICATIONS

After properly locating the anti-tip brackets in the rough opening, drill pilot holes 5 mm diameter maximum in the wall studs and/or wall plate. Then drill 10 mm diameter holes into the concrete a minimum of 13 mm deep. Use the #12 x 64 mm PH pan HD zinc screws and #12 flat washers to secure the brackets to the wall and use the 10 mm–16 x 95 mm wedge anchors to secure the brackets to the floor. Be sure that the screws penetrate the wall studs or wall plate a minimum of 19 mm. Refer to the illustration below.

⚠ WARNING

Make sure there are no electrical wires or plumbing in the area which the screws could penetrate.

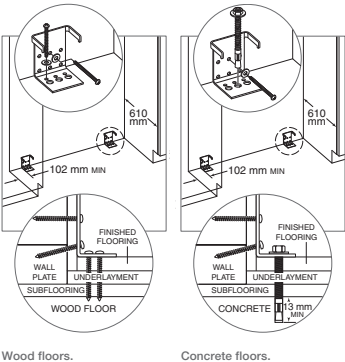
INSTALL CONCRETE WEDGE ANCHORS:

- 1) Drill a 10 mm diameter hole any depth exceeding the minimum embedment. Clean the hole or continue drilling additional depth to accommodate drill fines. Use a carbide drill bit manufactured within ANSI B94.12-77.
- 2) Assemble the washer and nut flush with the end of anchor to protect threads. Drive the anchor through the material to be fastened until the washer is flush with the surface material.
- 3) Expand the anchor by tightening the nut 3–5 turns past hand-tight position or to 34 newton meters of torque.

⚠ CAUTION

Always wear safety glasses and use other necessary protective devices or apparel when installing or working with anchors.

Anchors are not recommended for use in lightweight masonry material such as block or brick, or for use in new concrete which has not had sufficient time to cure. The use of core drills is not recommended to drill holes for the anchors.



Wood floors.

Concrete floors.

Position the Unit

Use an appliance dolly to move the unit near the rough opening. Model ICBWS-30 is equipped with rollers, so it can be moved into position more easily.

Shut off power to the electrical outlet. Plug the power supply cord into the 15 amp grounded outlet and roll the unit into position. Be sure that the anti-tip brackets are properly engaged.

IMPORTANT NOTE: If possible, keep the door closed until the unit is properly anchored.

IMPORTANT NOTE: If for any reason the unit has been laid on its back or side, you must allow the unit to stand upright for a minimum of 24 hours before connecting power.

CAUTION

Protect any finished flooring before moving the unit into place

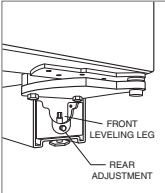
WARNING

To reduce the possibility of the unit tipping forward, the front leveling legs must be in contact with the floor once the unit is in position.

Level the Unit

Once the unit is in position, extend the front leveling legs down by turning the legs clockwise to adjust the height. The rear height adjustment can be made from the front of the base. Use a 10 mm socket to adjust the rear rollers. Turn the 10 mm hex bolt clockwise to raise the unit or counterclockwise to lower it. Refer to the illustration below for location of the rear roller base adjustment.

IMPORTANT NOTE: Be sure to reference leveling of the unit to the floor and not to surrounding cabinetry. This could affect the operation of the unit, such as door closing.



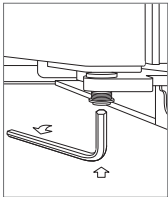
Rear roller base adjustment.

Door Adjustment

The door of the model ICBWS-30 can be adjusted in three ways: In and out, side to side tilt, and up and down. Regardless of the adjustment being made, start by slightly loosening the two upper hinge bolts on the upper hinge plate using a 13 mm wrench. Refer to the illustration below.

IN AND OUT ADJUSTMENT

Refer to the illustration for location of the bolt for in and out door adjustment. To adjust a left-hinge door; using a 5 mm allen wrench, turn the bolt clockwise to bring the handle side of the door inward, and counterclockwise to move the handle side of the door outward. Reverse the directions for a right-hinge door.



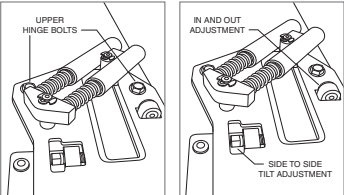
Door height adjustment.

SIDE TO SIDE TILT ADJUSTMENT

Refer to the illustration for location of the bolt for side to side tilt door adjustment. To adjust a left-hinge door; using a 10 mm wrench, turn the bolt clockwise to raise the handle side of the door up and counterclockwise to tilt the handle side of the door down. Reverse the directions for a right-hinge door.

DOOR HEIGHT ADJUSTMENT

To adjust a left-hinge door; using a 6 mm allen wrench, turn the bolt clockwise to raise the door and counterclockwise to lower the door. Refer to the illustration above. Reverse the directions for a right-hinge door.



Upper hinge bolts.

Door adjustment bolts.

Anchoring

After door and side panels have been installed, the unit has been leveled and door adjustment completed, anchor the wine storage unit to the opening. This will assure a proper fit and a secure installation.

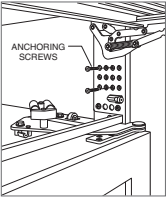
IMPORTANT NOTE: Be sure to level and square the unit before anchoring it.

To anchor the unit to cabinetry, open the grille, and install the screws provided through the grille frame into the cabinetry. There are several hole locations provided. Check for proper door clearance by fully opening the door. Refer to the illustration below.

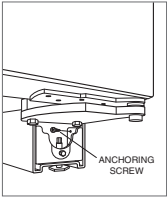
Next, drill a screw through the side hole inside the roller base assembly. There is one on each side. The screw will need to go in at an angle in order to attach properly. In a flush inset application, additional material may be needed behind the cleat to ensure sufficient anchoring.

⚠ CAUTION

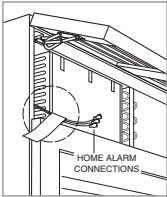
If the screws provided are not suitable for your application, you must provide adequate screws.



Top anchoring.



Bottom anchoring.



Home alarm connections.

Home Alarm Connections

If a home alarm system is to be installed on the wine storage unit, the connections should be made using the logic supplied with the alarm specifications. Refer to the illustration for the appliance lead locations, and refer to the following for color codes:

- Normally open contacts – white with red stripe wire
- Normally closed contacts – white with blue stripe wire
- Common – gray with white stripe wire

Use the 6 mm spade terminals or wire nuts provided to make the proper wiring connections.

IMPORTANT NOTE: If you are not responsible for alarm system connection, this information should be supplied to the home security system contractor.

⚠ CAUTION

The alarm circuit in the unit is intended as a low-voltage, low-current device only. It should not be used to switch line power.

Any unused terminals should be completely insulated and all wires should be secured away from conductive or moving components.

Complete the Installation – Model ICBWS-30/S

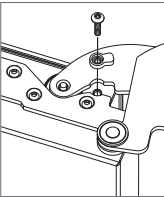
For overlay and flush inset applications, refer to the following pages for front and side panel information.

Before installing the kickplate, be sure to reinstall the drain pan. Once the drain pan is in place, screw the kickplate the to brackets attached to the inside surface of each roller base. Reinstall the grille following the instructions on page 13. Turn power back on to the electrical outlet.

90° Door Stop

The door of the model ICBWS-30 opens to 110°. A 90° door stop ships with the unit and is located behind the flip-up grille. Additional 90° door stop kits (7005865) are available through your Sub-Zero dealer.

The 90° door stop will be installed in the top hinge of the door. To install, open the door to approximately 90°. At the top of the door, insert the door stop down between the door hinge and the door closer arm. Insert the screw through the door stop and into the door as shown in the illustration below.



90° door stop.

Panel Installation

Before you install the front panel, refer to panel specifications for overlay or flush inset applications and be sure you are working with the panel design called for in your installation. If your customer has chosen the stainless steel design, the unit has been shipped complete with a finished stainless steel look. It will not be necessary to install a front panel or handle hardware. In your final preparation for stainless steel units, use a stainless steel cleaner to remove any marks. Abrasive cleaners should not be used, as they may scratch the surface.

If your customer has ordered an overlay model, you will be installing a front panel to give the unit the custom Sub-Zero look.

IMPORTANT NOTE: For overlay models, there are two design applications — overlay and flush inset. Be sure to use the correct panel size for your application.

Overlay Panels

If your customer has chosen an overlay design application, make sure that the panels you are about to install match dimensions listed in the overlay panel specifications to the right. Additional panel design information can be found in the Sub-Zero wine storage design guide and on our website, subzero.com.

IMPORTANT NOTE: The size of the overlay panel is critical. It must fit over the door frame. The weight of the overlay panel must not exceed 34 kg and the panel must be a minimum of 16 mm thick.

Overlay models are shipped without handle hardware. The cabinet manufacturer or designer will need to provide handle hardware to match the overall decorating scheme.

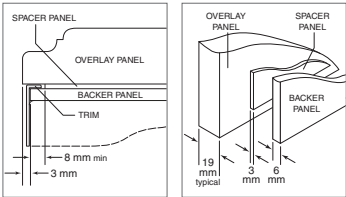
To install overlay panels, first remove the door trim molding. Insert a screwdriver tip into the top corner slot on the handle side and pop out the trim molding. Refer to the illustration below. Remove the screws and frame.

Sub-Zero allows a 6 mm space to slide the backing material into place in the frame. If your material is thicker than a 6 mm, either rout an edge around the panel to get a proper fit or mount the decorative overlay panel on a sheet of 6 mm thick material and insert the backing material into the channel.

You must allow for 3 mm space between the backer board and the decorative panel, so the panel will slide easily into the door frame.



Door trim.



Panel assembly cross section.

Panel assembly rear view.

The illustrations above provide a cross section view of the three panel assembly showing placement of the trim and a rear view of the three panel assembly with critical dimensions, standard for all models.

Install the handle hardware before inserting the panel. We recommend a larger D-style pull. The use of a small, one-piece knob is not recommended. If you use screws with thick heads, you will need to countersink the screws into the backer panel before sliding the assembly into place.

Slide the panel into the frame on the door. With the panel in position, replace the frame end. Be sure the panel is inserted completely into the channel for proper fit and alignment.

To reinstall the trim molding, insert the top of the trim molding into the grooves at the top of the door and work downward, snapping the trim molding into the clips on the frame.

GRILLE PANEL ASSEMBLY

Remove the grille panel assembly as described on page 13. Remove the top two corner screws and pull away the top frame. Slide the panel into position in the grille frame. If you are using a grille panel 6 mm or thinner, you will need to install a filler.

Reattach the top frame by reinstalling the two top corner screws. Install the grille panel assembly onto the unit, by reversing the grille removal procedure outlined on page 13.

Refer to specifications for overlay grille panels and the illustrations to the left for the exact sizing of all three panels.

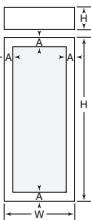
CAUTION

Do not exceed the panel dimensions listed for the appropriate overlay grille panel you are specifying. The overlay decorative panel cannot be any larger or it may restrict the air flow to the compressor area and cause problems with the operation of the Sub-Zero unit.

CAUTION

A solid panel must not be installed on a glass door unit, as this may cause moisture to form behind the panel.

Overlay Panels Specifications



Model ICBWS-30			
DOOR		W	H
Overlay Panel		762 mm	1772 mm
Spacer Panel		740 mm	1751 mm
Backer Panel		756 mm	1767 mm
GRILLE		W	H
Overlay Panel		762 mm	235 mm
Spacer Panel		740 mm	211 mm
Backer Panel		756 mm	227 mm
WINDOW		W	H
Cut-Out		597 mm	1607 mm
Location			A
			83 mm

Grille panel dimensions listed are for a standard 2134 mm overall height of the unit. For a 2108 mm overall height, subtract 25 mm from grille panel height dimensions. For a 2235 mm overall height, add 102 mm to height dimensions. Width dimensions do not vary.

Flush Inset Panels

If your customer has chosen the flush inset panel application, make sure that the panels you are about to install match dimensions listed in the flush inset panel specifications to the right. Additional panel design information can be found in the Sub-Zero design guide and on our website, subzero.com.

IMPORTANT NOTE: The size of the flush inset panel is critical. It must fit over the door frame. The weight of the overlay panel must not exceed 34 kg and the panel must be a minimum of 16 mm thick.

Overlay models are shipped without handle hardware. The cabinet manufacturer or designer will provide handle hardware at the job site to match the overall decorating scheme.

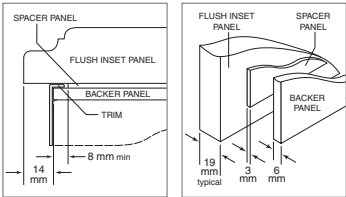
To install flush inset panels, first remove the door trim molding. Insert a screwdriver tip into the top corner slot on the handle side and pop out the trim molding. Refer to the illustration below Remove the screws and frame.

Sub-Zero allows a 6 mm space to slide the backing material into place in the frame. If your material is thicker than a 6 mm, either rout an edge around the panel to get a proper fit or mount the decorative flush inset panel on a sheet of 6 mm thick material and insert the backing material into the channel.

You must allow for 3 mm space between the backer board and the decorative panel, so the panel will slide easily into the door frame.



Door trim.



Panel assembly cross section.

Panel assembly rear view.

The illustrations above provide a cross section view of the three panel assembly showing placement of the trim and a rear view of the three panel assembly with critical dimensions, standard for all models.

IMPORTANT NOTE: With the panels installed, 13 mm minimum reveals must be kept on all sides to ensure proper door opening and sufficient cooling of the unit.

Install the handle hardware before inserting the panel. We recommend larger D-style pulls. The use of small, one-piece knobs is not recommended. If you use screws with thick heads, you will need to countersink the screws into the backer panel before sliding the assembly into place.

Slide the panel into the frame on the door. With the panel in position, replace the frame end. Be sure the panel is inserted completely into the channel for proper fit and alignment.

To reinstall the trim molding on side-by-side models and the upper door for over-and-under models, insert the top of the trim molding into the grooves at the top of the door and work downward, snapping the trim molding into the clips on the frame.

Remove the grille panel assembly as described on page 13. Remove the top two corner screws and pull away the top frame. Slide the panel into position in the grille frame. If you are using a grille panel 6 mm or thinner, you will need to install a filler.

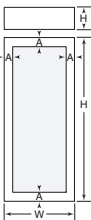
Reattach the top frame by reinstalling the two top corner screws. Install the grille panel assembly onto the unit, by reversing the grille removal procedure outlined on page 13.

Refer to specifications for flush inset grille panels and the illustrations to the left for the exact sizing of all three panels.

CAUTION

Do not exceed the panel dimensions listed for the appropriate flush inset grille panel you are specifying. The flush inset decorative panel cannot be any larger or it may restrict the air flow to the compressor area and cause problems with the operation of the Sub-Zero unit.

Flush Inset Panels Specifications



Model ICBWS-30			
DOOR	W	H	
Flush Inset Panel	787 mm	1772 mm	
Spacer Panel	740 mm	1751 mm	
Backer Panel	756 mm	1767 mm	
GRILLE	W	H	
Flush Inset Panel	787 mm	235 mm	
Spacer Panel	740 mm	211 mm	
Backer Panel	756 mm	227 mm	
WINDOW	W	H	
Cut-Out	597 mm	1581 mm	
Location		A	
		95 mm	

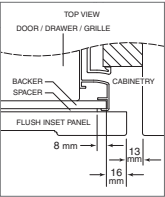
Grille panel dimensions listed are for a standard 2134 mm overall height of the unit. For a 2108 mm overall height, subtract 25 mm from grille panel height dimensions. For a 2235 mm overall height, add 102 mm to height dimensions. Width dimensions do not vary.

Flush Inset Panel

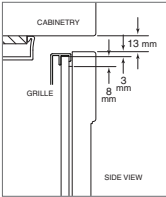
Illustrations A–D provide panel offsets and reveals for model ICBWS-30 in a flush inset application. Refer to the chart below for reference to the illustrations.

For additional information on panel reveals, visit the specification library section of our website, subzerotrade.com.

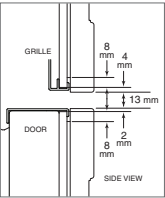
Panel Offsets	Illus.
MODEL ICBWS-30	
Door / Grille Sides	A
Grille Top	B
Grille Bottom / Door Top	C
Door Bottom	D



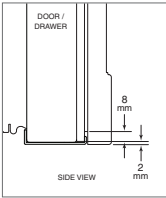
Illus. A



Illus. B



Illus. C



Illus. D

Dual Installations

When two models ICBWS-30 or a model ICBWS-30 and built-in unit are installed side by side, a dual installation kit may be required. Contact your Sub-Zero dealer for the proper components and installation instructions.

DUAL STANDARD INSTALLATIONS

Two overlay or stainless steel units may be placed side by side in a dual installation. Some dual standard installations will require a dual installation kit, available through your Sub-Zero dealer.

A custom filler strip can be used in between two units in an overlay or stainless steel design application. It is recommended that the filler strip be at least 51 mm wide, to prevent condensation between the units. Be sure to add the filler strip width to your rough opening width.

Dual installations without a filler strip can only be accomplished using two units with opposite hinges as shown in illustration A below. The dual installations shown in illustrations B and C require a filler strip.

IMPORTANT NOTE: For the application shown in illustration A, a dual installation accessory kit is required.

DUAL FLUSH INSET INSTALLATIONS

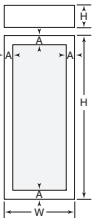
Installing two models ICBWS-30 or a model ICBWS-30 and built-in unit side by side in a flush inset application will require adjustments to the dimensions of your finished rough opening, panel sizes and panel offsets. It will also require a dual installation kit, available through your Sub-Zero dealer.

Dual installations without a filler strip can only be accomplished using two units with opposite hinges as shown in illustration A below. The dual installations shown in illustrations B and C require a filler strip. Illustration A is the only application that will accommodate the dual wide grille.

IMPORTANT NOTE: The application shown in illustration A can only be achieved by installing dual flush inset panels. Failure to install dual flush inset panels will cause the handle side of the panels to collide when closing. In this application a dual installation accessory kit is also required.

Dual flush inset panels and dual installation kits are available through your Sub-Zero dealer. Refer to the illustration and chart for dual flush inset panel specifications.

Flush Inset Panels—Dual Installation

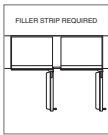


Model ICBWS-30			
DOOR	W	H	
Flush Inset Panel	775 mm	1772 mm	
Spacer Panel	740 mm	1751 mm	
Backer Panel	756 mm	1767 mm	
GRILLE	W	H	
Flush Inset Panel	775 mm	235 mm	
Spacer Panel	740 mm	211 mm	
Backer Panel	756 mm	227 mm	
WINDOW	W	H	
Cut-Out	584 mm	1581 mm	A
Location		95 mm	

Grille panel dimensions listed are for a standard 2134 mm overall height of the unit. For a 2108 mm overall height, subtract 25 mm from grille panel height dimensions. For a 2235 mm overall height, add 102 mm to height dimensions. Width dimensions do not vary.



Illus. A



Illus. B



Illus. C

Flush Inset Panels—Dual Installation

When installing two models ICBWS-30 or a model ICBWS-30 and built-in unit side by side in a flush inset application, you must decrease the width of the decorative flush inset panels by 13 mm. Adjustments to the panel offsets will also need to be made. These adjustments are needed to achieve a proper fit and to ensure the panels do not collide when closing. Panel dimensions in the chart below have been adjusted to reflect the decrease in panel dimensions.

IMPORTANT NOTE: If a filler strip is not used, dual installations can only be accomplished using two units with opposite hinges.

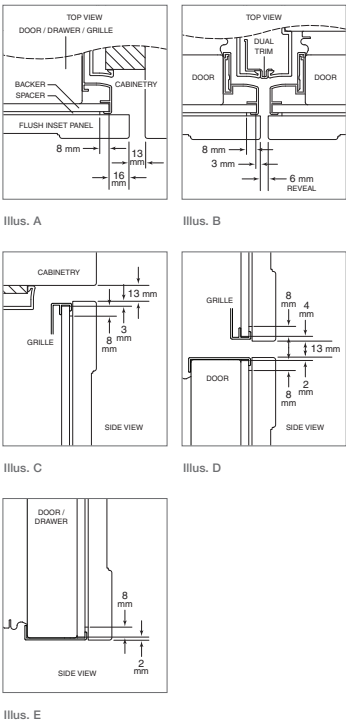
Illustrations A–E provide panel offsets and reveals for model ICBWS-30 in a flush inset application. Refer to the chart below for reference to the illustrations. All reveals are 13 mm unless otherwise specified.

For additional information on panel reveals, visit the specification library section of our website, subzerotrade.com.

⚠ CAUTION

Do not exceed the flush inset decorative panel dimensions. Exceeding dimensions could cause damage to the panels and the Sub-Zero unit.

Panel Offsets	Illus.
ALL REFRIGERATOR / ALL FREEZER	
Doors (hinge) / Grille Sides	A
Doors (handle) Sides	B
Grille Top	C
Grille Bottom / Door Top	D
Door Bottom	E

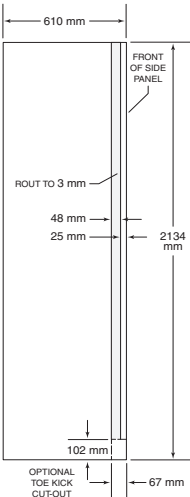


Side Panels

IMPORTANT NOTE: Side panels will need to be installed before the unit is placed in its final position.

When installing a model ICBWS-30 with a custom side panel, an accessory kit (7003407) is required. Classic stainless steel and white enamel side panels are available through your Sub-Zero dealer. Refer to instructions included with the side panel kit when installing these side panels.

IMPORTANT NOTE: The use of side panels may change the width of your rough opening.



Custom side panel dimensions.

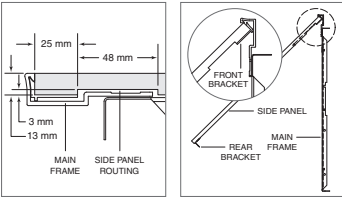
CUSTOM SIDE PANEL INSTALLATION

The custom side panel will need to be a minimum of 610 mm deep and 13 mm thick. Refer to the custom side panel dimensions illustration for additional specifications. Routing will be necessary for the side panel to fit flush against the side of the unit. Refer also to the routing detail illustration.

IMPORTANT NOTE: The overall height on the side panel will vary with the height of the grille being used. Make sure you know your finished height before cutting any panels.

Install the brackets provided in the kit onto the side panel in the locations shown in the illustration below. The front brackets are meant to engage the mainframe and the back brackets will wrap behind the unit when the panel is in place. Screws are provided in the kit. If the provided screws will not work for your installation, you will need to provide the necessary screws to attach the brackets.

Place the panel at a 75° angle and engage the front brackets into the mainframe. Swing the panel inward, being sure that the front brackets engage the mainframe. With the panel in position, attach the rear brackets to the rear of the unit with the screws provided. Check to see that the panel is secure. Refer to the illustration below.



Side panel routing detail.

Side panel attachment (top view).